

WEATHER			
	Min.	Max.	Precip.
Wednesday, Feb. 18	27	48	0.04
Thursday, Feb. 19	13	22	Trace
Friday, Feb. 20	25	32	0.00
Saturday, Feb. 21	21	30	0.00
Sunday, Feb. 22	31	50	0.00
Monday, Feb. 23	22	42	0.00
Tuesday, Feb. 24	29	51	0.00

ONE HUNDREDTH YEAR—No. 36

14 Pages This Week

Plus 4-Page Supplement

CHELSEA, MICHIGAN, THURSDAY, FEBRUARY 26, 1970

15c per copy

SUBSCRIPTION: \$4.00 PER YEAR

Varsity Cagers Storm Past Saline, 66-64

Chelsea Varsity basketball team broke a three-game losing streak as they picked up an important 66-64 victory over the Saline Hornets last Friday night, Feb. 20 at the Chelsea High gym.

The Chelsea cagers got off to a slow start, being outscored by seven points in the first half, and were behind at intermission for the fourth consecutive game.

Howie Treado played a fine game in the first half as he scored 12 points, going 6-8 from the line, and grabbing 16 rebounds, including a stretch when he pounded the boards for nine consecutive rebounds.

The Bulldogs came out with a full court press to start the second half and used it to perfection as they scored 24 points, causing Saline to commit costly turnovers.

The Chelsea diamond and press stopped the Hornets' offense cold, holding Saline to 13 points in the third period. Jim Wojcicki paced the offensive effort, scoring 12 points in the third stanza while Conklin and Hughes each tallied six.

(Continued on page three)

World Day Of Prayer Set For March 6

A World Day of Prayer, sponsored by the Church Women United of Chelsea, will be held at St. Mary Catholic church Friday, March 6 at 1 p.m. Women of the Chelsea area are invited to attend this observance, which is scheduled for Christians in more than 130 countries.

The theme of the service, "Take Courage," was chosen and developed by a housewife from Egypt, a social worker from Guyana, a teacher from India, a church worker from the Philippines and was chaired by a woman in the United States.

Locally, the ecumenical celebration will be presented by the pastor's wives of the participating churches.

(Continued on page three)

Pre-Kindergarten Children Invited To Visit School

Children who will be 5 years old by Dec. 1, 1970 and entering kindergarten in the Chelsea school system are invited to visit a kindergarten class one-half day to get acquainted, between March 16 and April 30. There will be no school on March 27, 30 and 31 (Spring Vacation).

If you are interested in having your child come, please call South or North school to make arrangements for a specific day. This visit does not necessarily indicate that he will be assigned to that room or school in the fall.

CHS Madrigal Singers Rated As 'Superior'

Chelsea High school Madrigal Singers received a rating of "superior" at the District IV Solo and Ensemble Festival held at Wayne State University on Saturday, Feb. 21.

The group, which was one of several competing, received the rating despite the fact that two of its members, Randy Seitz and Mark Wright, were unable to attend. Members of the group competing are Chris Alber, Alfretha Harrison, Jackie McClain, Rita Spees, Caryn Thornton, Jill Flintoft, Pat Gilbert, Tina Orthing, Diane Schroen, Dave Hess, Tim Orthing, Keith Pfeifle, and Ed Wade.

"It was especially gratifying to see the fine performance turned in by the madrigal singers, in spite of the fact that two members were missing," commented Miss DiAnn L'Roy, vocal music director, who accompanied the group.

Judge Eileen Kelly of Edsel Ford High school commented that the group gave a "most sincere presentation. Congratulations to you and your fine director."

Miss L'Roy noted that Chris Alber received an "excellent" rating for her solo work as did Pat Gilbert and Tina Orthing for their duet. Jill Flintoft received a "good" rating. Miss L'Roy re-

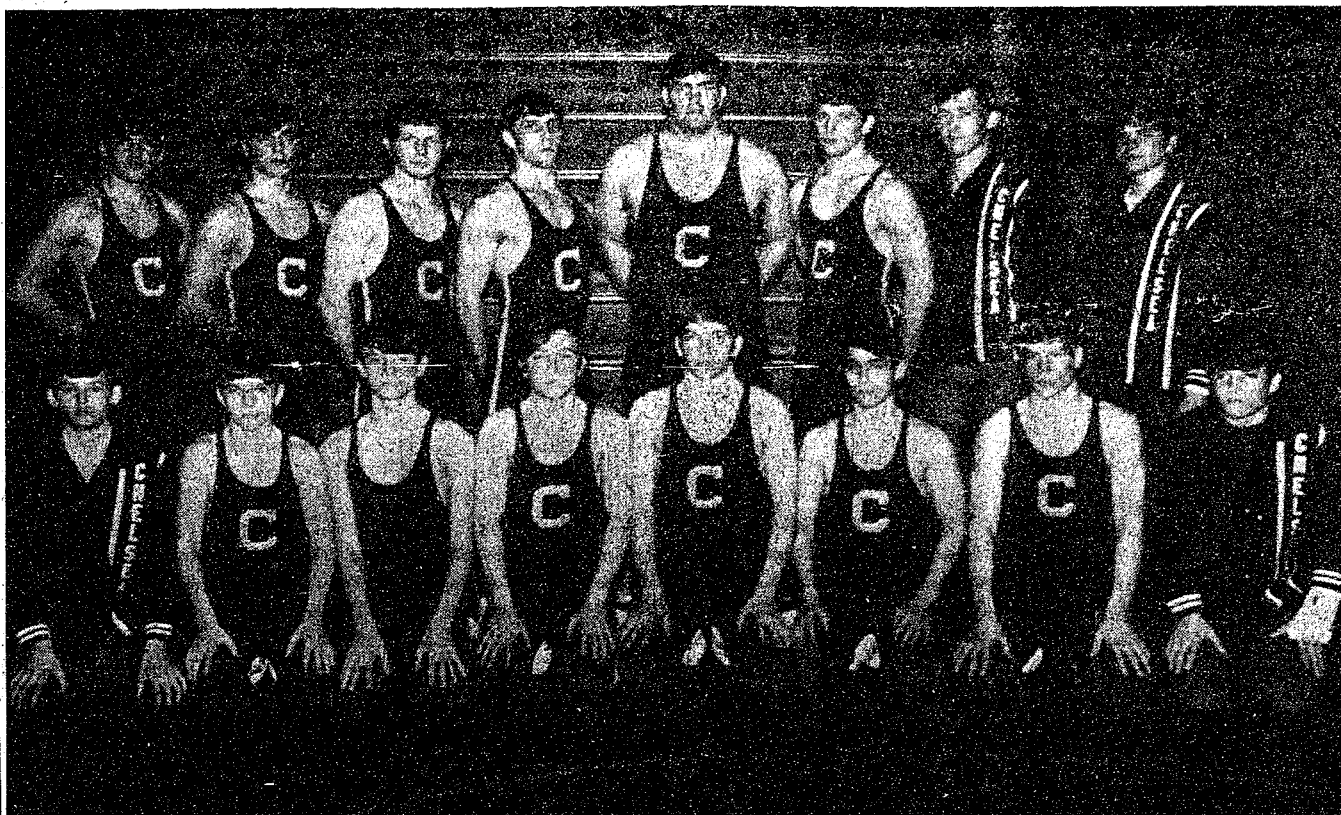
(Continued on page three)

The Chelsea Standard

QUOTE

"Let thy discontents be thy servants; if the world knows them 'twill despise thee and increase them."

Benjamin Franklin.



"CLASS B DISTRICT WRESTLING CHAMPS" is the title awarded the Chelsea High school wrestling team, which edged out Tecumseh for the honor in Saturday's (Feb. 21) district tournament held at Chelsea. Seven Chelsea wrestlers have been placed in regional competition to be held Saturday, Feb. 28 at Chelsea High school. Standing from the left are varsity wrestlers Jerry Kuhl,

Bob Koenigter, Doug McDonald, Captain Tim Colvia, Dennis Brown, Karsten Kargel, Randy Seitz, and Gary Montange. Kneeling from left are varsity men Mike Robbins, Mark Montange, Jim Wencel, Captain Tom Tirb, Jim Poertner, Steve Eresten, Tom McKernan, and Larry Jones. The team is coached by Richard Bareis.

CHS Wrestlers Win District

Chelsea wrestlers put together a balanced performance Saturday, Feb. 21, to win the Class B District competition held at Chelsea and to place seven men in the regional competition slated for this Saturday, Feb. 28 at Chelsea High school.

Individual honors were first-place winners Jim Wencel at 107, Bob Koenigter at 145, Karsten Kargel at 185, and Dennis Brown at heavyweight. Second-place winners were Mark Montange at 98, Jim Poertner at 130, and Doug McDonald at 155.

All of these wrestlers will be in

the regional competition Saturday. In consolation, Tom McKernan finished fourth at 137 and Randy Seitz finished third at 175.

Total team scores ended up with Chelsea having 98 points, Tecumseh 92, Michigan Center 64, Jackson Northwest 53, Pinckney 36, Brooklynn Columbia Central 29, Blissfield 23, and Jackson Lumen Christi 11.

Chelsea and Tecumseh were very close all day with each team placing seven men in the finals. At the end of the first round, Chelsea led by eight points and this was probably where Chelsea earned the margin of victory in that Chelsea won 10 of 11 matches, while Tecumseh won 9 of 12. Of these, Chelsea scored eight pins to Tecumseh's four.

Each team placed four men in consolation, in addition to the seven in the finals.

At the end of consolation finals Chelsea led by a score of 84 to 77. In the finals, each team was even, with four champions and three runners-up. Chelsea did get two pins to Tecumseh's one in the finals.

Coach Richard Bareis points out that the margin of victory was accomplished by Chelsea's being able to score points in all but one weight class, while Tecumseh was shut out in three classes. This gave Chelsea a two-match edge.

Jaycees Win Three Awards At State Meet

Chelsea Jaycees attended the last of their State Board meetings for the 1969-70 Jaycee Year on Feb. 13 and 14. The Winter State meeting was held at Flint and the theme for the week-end was, The Early 1920's Flapper Era, including the St. Valentine Massacre.

The week-end started off with a Friday night party which was attended by more than 2,000 Jaycees and their wives. There was also a Queen Mall contest in which finalists were chosen and introduced to the group. The queen was chosen by the amount of pennies placed in each girl's container. Each penny represented one vote. Chelsea's queen candidate, Darlene Eder, made the final 10 girls and placed fourth in the over-all competition.

Saturday activities started with a Board of Directors meeting in the morning and continued with classes on various programs during the afternoon. Saturday night there was a banquet where the Michigan Jaycees honored the Five Outstanding Young Men from Michigan.

Chelsea Jaycees were awarded three Project of the Quarter Awards at the banquet Saturday evening. Awards represented the chapter's work in the Internal and External programming during the past three months. Chelsea has now won 12 out of a possible 18 Project of the Quarter Awards for the first three quarters. This is the highest total Chelsea has ever won in this competition and ranks the chapter very high in the state ranking for Outstanding Chapter of the year which will be named at the May State Convention.

(Continued on page three)

The run-down of matches follows.

Mark Montange, a freshman wrestling at 98 pounds, scored a pin win over Brooklynn Columbia and a 12-2 decision win over Jackson Northwest before meeting Holderman of Michigan Center. Holderman, a senior, defeated Mark, 8-0, but even in defeat Mark showed the good moves and drive to indicate that he will have a good chance in the regional.

Junior Jim Wencel scored a pin win over Blissfield at the 107-pound class, and a 6-1 decision over Pinckney before going into the finals. In the finals Jim showed the ability to score points and outstanding riding ability in defeating Maynard of Tecumseh, 9-1.

At 115 pounds Captain Tom Tirb scored a pin win over Lumen Christi before being upset by Jackson Northwest.

Steve Eresten was defeated by Blissfield in the 123-pound class. Senior Jim Poertner scored a pin win over Lumen Christi in the 130-pound class and a 6-2 decision over Brooklynn Columbia before falling to Maynard of Tecumseh, 8-0.

At 137 pounds, sophomore Tom McKernan defeated Pinckney, 4-3, then lost to Michigan Center, 6-4. Tom then came back to defeat Jackson Northwest, and finish fourth.

Senior Bob Koenigter, at 145 pounds, was selected as the number one seed and he lived up to it by scoring a pin over Blissfield, a 5-0 decision over Brooklynn Columbia, and a 6-0 decision over Tilton of Tecumseh for the championship.

First-year wrestler, Doug McDonald, gained a pin win at 155 pounds over Pinckney and a 4-0

Jackie McClain Wins French Scholarship

"Allons y!" and it's off to France for Jackie McClain, a junior at Chelsea High school.

Jackie, who is the daughter of Mr. and Mrs. Donald McKinley, 6130 Stoffer Rd., was selected from a group of French Club applicants to go with the Youth for Understanding organization to France for part of the summer.

Applicants were required to take a scholarship test administered by the French Club, had to submit letters of recommendations, as well as expressing an interest in the idea of living in France for a time with a French family.

A group consisting of Mrs. Stephen (Nancy) Gilbreath, Chelsea High school French Club advisor; Mrs. Ron (Jane) Cummings; Charles Lane, principal; and Heidi Sprague and Roberta Dvorak last year's scholarship recipients selected Jackie from the group of candidates.

This is the third year in succession that scholarships to France under the Youth for Understanding program have been awarded. The first year of the award Tom Thomson received the scholarship.

An alternate has also been selected by the group of judges in the event that Jackie for some reason is unable to accept. Susan Stock, daughter of Mr. and Mrs. Thomas Stock, was selected as the alternate.

District Cage Tourney Opens Here Tuesday

Chelsea Paired Against South Lyon In Opening Round of Eliminations

Chelsea's basketball team has been slated for the first game of the District 18 Tournament to begin Tuesday, March 3.

Chelsea's fate was decided at a district draw held Tuesday, Feb. 24 at Chelsea High school. Representatives from Chelsea (Jon Schaffner), Brighton (Bob Marks), South Lyon (Gar Smith), Pinckney (D. J. Lincoln), and Dexter (Tom Walsh and Frank Fredericks) were on hand to draw for the district line-up.

The first district game will be played Tuesday, March 3 at Chelsea at 7:30 p.m. between Chelsea and South Lyon, all other teams drawing byes on the first round.

Referees for the first round will be Harold Goodhue of Flat Rock and Gerald Teemire of Willow Run.

The second round of the districts will be held Wednesday and Thursday, March 4 and 5. The games will be between Pinckney and Dexter at 7:30 p.m. on Wednesday and between Brighton and the winner of the Chelsea-South Lyon game on Thursday, both games beginning at 7:30 p.m. at the CHS gym.

Referees for those games are Ben Bement of Weberville and Louis Bertson of Ann Arbor for the Wednesday game; and Goodhue and Teemire for the Thursday game.

Season records for the district teams are Brighton, 12-4; Chelsea, 8-7; Dexter, 4-10; Pinckney, 3-14; and South Lyon, 4-11.

Chelsea's main competition this year should be the Brighton Bulldogs. Brighton has rebounded from a miserable record last year to become one of the top teams in the area. Brighton has lost only one game so far this season and are currently in second place in the tough Wayne-Oakland League. Brighton's biggest asset is their height and they should be one of the taller teams at the tournament.

Two teams from the Southeastern Conference will be involved in the Chelsea Tournament. They are South Lyon and Dexter.

South Lyon has had an off year in the conference. South Lyon seems to be in the process of rebuilding as their coach has employed the service of some sophomores. The Lions also have some height in a 6' 4" sophomore cen-

ter. The main strength for South Lyon has been Dave Brannon, a 6' 2" senior guard averaging just over 20 points a game.

Dexter is the other team in the conference that will be participating in the tournament. The Dreadnaughts have had a rather disappointing season also after they had been picked by many observers to finish high in the Southeastern Conference. Dexter is another team that possesses height. Dan Arbour, who stands 6' 4", is their center and they have plenty of height in the front line, led by Tony Delanno and by guard Greg Ianni at 6' 2".

Pinckney rounds out the teams in the tournament and will definitely be tagged the underdog. The Pirates have had one of the worst seasons in their history, as they are finding it harder and harder to break into the win column with any kind of consistency. Pinckney will have the privilege of being the smallest team on the court. They have been led this year by 5' 1" guard Warren Yodler.

(Continued on page six)

Committees Named By Chest Board

Mrs. Homer Kuhl, president of the Chelsea Community Chest, has named members of the nine standing committees for 1970, announcing the names at the monthly board meeting.

Elected at the meeting to fill the secretary's position was Mrs. Charles (Norma) Popovich, former treasurer, while Elmer Kiel was elected to replace her as treasurer.

On the executive committee are Mrs. Homer (Margaret) Kuhl, president; Tony Bowen, vice-president; Norma Popovich, secretary; Elmer Kiel, treasurer, and James Liebeck.

Other committees, with the first named in each group being designated chairman, are: Campaign—Gary Albrecht, Lyle Chriswell, Lu Muck, Walter Brown, L. D. Guinan, James Hoffmeyer.

(Continued on page five)



VOLUNTEERS for the new Chelsea Medical Center Extended Care Facility plan for patient activities and for a membership recruiting meeting to be held Monday, March 2 at 1:30 p.m. in the dining room of the Chelsea facility. These women are the original volunteers who have been spending two or three hours per day during the past

Women Volunteer Service To Help Medcenter Patients

Several Chelsea area women have been giving of their time and creativity over the past month to the Chelsea Medical Center's new Extended Care Facility. They are now seeking others to join the Center's Auxiliary.

The donation of efforts was instituted by eight area women to aid the center's work in diversional therapy.

Each member of the group has given two to three hours per day of her time to filling the non-medical needs of the Medcenter's patients.

Thus far the women have spent time talking with patients, writing cards and letters for them, reading to them, and helping the ambulatory patients to enjoy their time in the facility's lounge areas.

"We're hoping to institute craft programs and other activities for the patients who really should be out of their rooms and active," explains one of the volunteers.

"There's a beauty shop in the facility and many of the patients enjoy being wheeled down to have their hair done," she continued.

The group has also scheduled meal-time entertainment to encourage patients to eat in the Mediterranean-styled dining room. So far the Madrigal Singers from Chelsea High school, the CHS band and soloists from the soon-to-be presented musical "Carousel," have performed for the recovering patients. Other entertainment plans are in the formative stages.

Those women who have been instrumental in the formulation of the facility's volunteer program are Mrs. George Heydlauff, Mrs. Charles Lancaster, Mrs. Robert Daniels, Mrs. William Rademacher, Mrs. Lawrence Steger, Mrs. Dorothy Miller, Mrs. John Dunn, and Mrs. John Thomson.

A recruitment meeting will be held Monday, March 2, at 1:30 p.m. in the dining room of the extended care unit for interested area residents. All are welcome, or may call any of the women in the program for further information.

If interested volunteers are unable to attend, they may call Mrs. Dorothy Miller at 475-8020, or Mrs. Lawrence Steger, at 475-4981.



STERNLY OVERSEEING the young love of Billy Bigelow (Dan Wenk) and Julie Jordan (Chris Alber) is the owner of the carousel (Janet Boylan) and Randy Seitz. Standing in front from the left are Chris Alber, Jill Flintoft, Sue Blaess, and Denise Thomson. Tickets for the production go on sale Monday, March 2 and are available at the CHS administration building or by calling Brenda Seitz at 475-3461. (See story on page six.)


Established 1871 **The Chelsea Standard** Telephone GR 5-3581
 Excellence Award By Michigan Press Association
 1951-1952-1960-1964-1965-1966
 Walter P. Leonard, Editor and Publisher

Published every Thursday morning at 300 North Main Street, Chelsea, Mich. 48118, and second class postage paid at Chelsea, Mich., under the Act of March 3, 1879.
ADDRESS CORRECTION REQUESTED.

Subscription Rates (Payable in Advance)
 In Michigan: One Year \$4.00 Six Months \$2.25 Single Copies \$.15
 Outside Michigan: One Year \$6.00 Six Months \$3.50 Single Copies \$.20
 Service men or women, anywhere, 1 year \$4.00

MEMBER **NATIONAL NEWSPAPER** Association - Founded 1885
 National Advertising Representative: **MICHIGAN NEWSPAPERS, INC.**
 257 Michigan Ave.
 East Lansing, Mich. 48822

Washington Report
 by Congressman **MARVIN L. ESCH**



It is time skyhigh interest rates on mortgages be lowered to put some life back in the feeble housing market. The year-long inability of builders to build homes and buyers to buy homes has developed into a vicious circle that adversely affects thousands of people in Michigan and throughout the nation.

People with good jobs and excellent credit ratings, unable to get mortgage money for new houses, are forced to stay in older homes or apartments. This increases the demand for a limited supply of housing units and the price of housing goes up. Add in the snowballing inflation of recent years and you end up with a most depressing picture.

For families with good income this high cost of housing pinches with increasing severity. But for people on low, fixed incomes, such as senior citizens, the impact is little short of disastrous. They are compelled to remain in housing often inadequate while paying in many cases an increasing share of their very limited income for shelter.

Meanwhile, efforts by private industry and government to ease

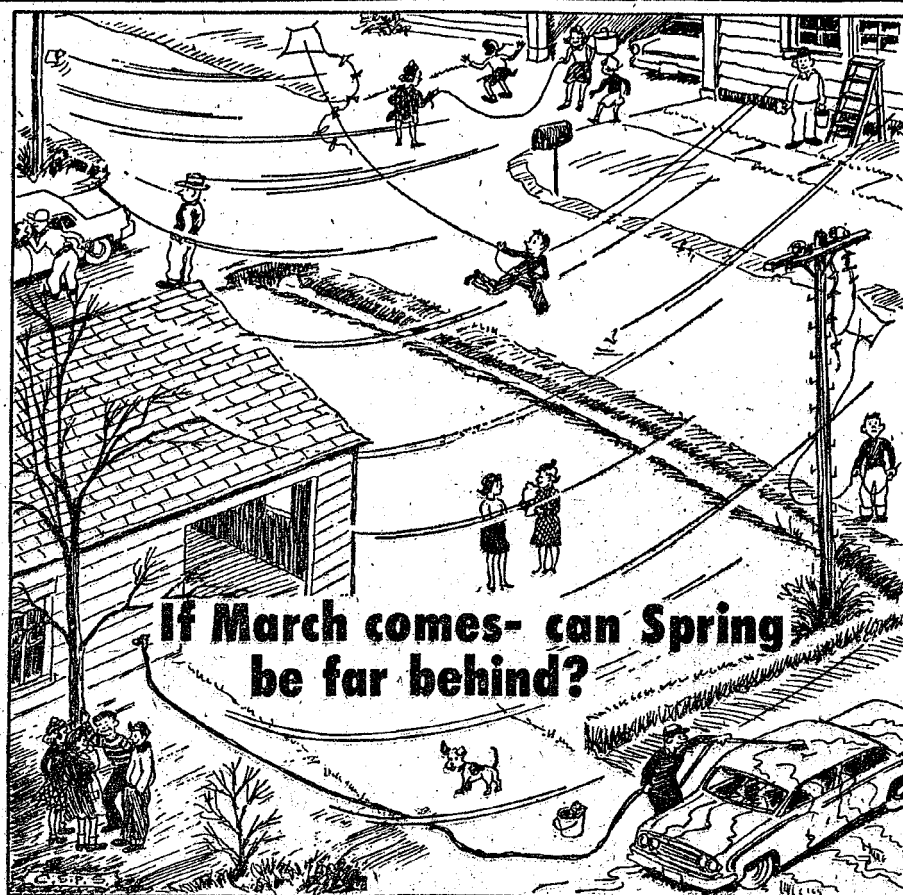
the situation by construction of low-cost housing proceeds at a snail's pace.

While the general public suffers, companies that have long been involved in home building have been forced into inactivity or out of the field entirely. Many small contractors in our district have been forced to the wall.

I am, of course, fully aware of the reason for the lack of loan money and the high interest rates. The Federal Reserve Board, an agency independent of the Administration and Congress, has been striving to put an end to an inflation that has punished Americans for half a decade.

I also want to halt inflation and am working as hard as I can to that end. But, we must end inflation in a manner that will not make the cure worse than the disease. Housing has already borne more than its share of the pain that must necessarily come when a nation is working its way out of the irresponsible fiscal policies of previous Administrations.

I believe we can continue to combat inflation while at the same time easing interest rates and putting an ailing housing industry back on the road to robust health.



★ MICHIGAN MIRROR ★

By Elmer E. White, Secretary, Michigan Press Association

Coat Tails Measures

One of the intangibles involved in any political campaign is the "coat tail" strength of the candidates at the head of the ticket.

"Coat tails" is a political term meaning a candidate's ability to pull other members of his party to victory which they might not otherwise have.

The classic candidate who didn't have substantial coat tails is Dwight Eisenhower, who won huge majorities for himself but couldn't transfer his popularity to other Republican candidates. Franklin D. Roosevelt, on the other hand, had tremendous coat tail strength.

On the state level in recent years former Gov. George Romney displayed coat tail ability, though not in overwhelming proportions. For the Democrats, Secretary of State James M. Hare had coat tails, bringing many a voter who had voted for Romney back into the Democratic column for the rest of the ballot.

One of the big questions in the mind of planners in both parties these days is how to get Gov. William G. Milliken's coat tails are going to be.

Milliken is considered pretty much a sure thing for re-election, barring any unforeseen circumstances in the approaching months.

But no one is sure whether he can transfer his popularity to other Republican candidates, such as those for the legislature.

"He hasn't been tested on this yet," explained one party strategist. "We just don't know how he'll do. It's something you just can't figure until he's been down the road once."

With membership in both houses of the legislature split almost evenly between two parties, Milliken's ability to pull other Republicans to victory is crucial.

At present, Republicans hold a 20-18 edge in the Senate while Democrats have a 57-53 margin in the House.

The outcome of the legislative races is made even more important by the fact the legislature will redistrict Michigan's 19 congressional districts next year. Control of both houses would allow a party to shape the districts to its own advantage without worrying about having to compromise.

Republican State Chairman William McLaughlin says the length of Milliken's coat tails will be "very important."

But he qualifies that by saying,

"you've got to have horses out in those races who can do the job on their own. The leader of the ticket is just frosting on the cake."

Part-Time Help Sought To Help With U.S. Census

The U. S. Bureau of the Census needs local people to work on the 1970 Census of Population and Housing in this area. It was announced today by Jay Fleming, district manager of the census.

Jobs to be filled will be as census takers who will call upon households that have not mailed back their census forms or who have mailed back incomplete ones. Generally, they will work near their own neighborhoods.

Jobs will last from three to five weeks in April and May. Some work will be done evenings and on Saturdays as some people are at home only during those times.

Applicants must be American citizens, 18 or older, and must pass a written test to show ability to follow printed instructions and do simple arithmetic. They must also be in good physical condition for walking, standing and climbing stairs. Most should have a home telephone, and for some a car will be necessary. Mileage will be paid for use of a car on official census business.

Pay will be on a piece rate basis, designed to average about \$2 per hour nationally.

The district manager is urging housewives, especially, to apply. He says past experience has shown the Census Bureau that they are careful, conscientious workers, and unlike most men, who have regular employment, they can take on short-term jobs. And he adds that most housewives welcome the chance to earn some extra money.

Interested persons should apply at U. S. Census Office No. 0458, 2nd Floor, 2801 E. Michigan, Jackson 49202.

MONEY TROUBLE? ONE PLACE TO PAY!

Credit Management Service
 662-2565
 215 South Fifth Ave.
 Ann Arbor
 State Licensed and Bonded

"If you don't have much strength on the bottom of the ticket, it's too much to ask of any one person to pull the whole ticket," he said.

Michigan Democratic Chairman James McNeely, of course, is not conceding victory to Milliken. But McNeely does think "which ever party carries the Governor's race is going to carry both houses of the legislature."

"It's going to be close and individual candidates will make a difference," he says. "And if the election is very tight then that prediction doesn't hold."

"But if either candidate carries by a sizable margin, he should take both houses of the legislature for his party," McNeely says.

There are many months and campaign miles to be traveled between now and November, and anything could happen.

It is indicative of Milliken's personal strength right now, however, that his coat tail strength is being talked about rather than whether he can win.

And while he has been in office only a little over a year, polls show his "recognition factor" with the voting public is climbing rapidly. Aides say that while he could go to the bank alone and not be stopped when he took office, he now is stopped wherever he goes by autograph seekers, another sign of strength.

The final decision about his coat tail strength won't be made by the strategists now worrying about it.

That decision will come in the voting booth next Nov. 3, and it will be made by John Q. Public.

Subscribe today to The Standard!

"You Can't Go Wrong, If You Give Flowers"

THE LITTLE FLOWER SHOP

Live and Artificial flowers, arrangements and corsages.

MILDRED M. FISH
 3451 WALTRIOUS RD.
 CHELSEA, MICH.
 Ph. GR 5-8508

JUST REMINISCING

Items Taken from the Files of The Chelsea Standard

4 Years Ago . . .

Thursday, Feb. 24, 1966—

Chairman of the Chelsea March of Dimes campaign, Mrs. Silas Hopkins, announced that the total for the drive this year as of Feb. 21 is \$2,135.75.

A mass illegal deer kill has prompted local sportsmen to post a reward for information leading to the arrest and conviction of guilty parties.

The first of three Lenten services sponsored by the Chelsea Ministers Fellowship will be Sunday evening, Feb. 27, at 8 p.m. in the First Methodist church. The Rev. John Smucker, vicar of St. Barnabas Episcopal church, will conduct the services.

Thomas C. Smith, 518 Congdon, has been appointed village building inspector. Smith, who has served several years as Chelsea village assessor, replaces Gene Garvey, who resigned from the position.

Cast members in Chelsea High school's production of "Brigadoon" have been announced. Cast members are Roger Frisinger, Jay Livingston, Sharon Bollinger, Becky Freeman, Wes Stineholder, Susan Knickerbocker, Joan Dietle, Ron Haab, Mike Tavares, Richard Huelburg, Bill Dehn, Kinyon Gordon, Brian Dyson, Lauralyn Johnston, and Bill White.

24 Years Ago . . .

Thursday, Feb. 28, 1946—

Women of the Protestant churches of this community will observe the National Day of Prayer with services at St. Paul's. Mrs. Drew of Dexter will be the speaker of the afternoon. The committee in charge of arrangements is: Mrs. Waldo Kusterer, chairman, assisted by Mrs. Willbert Breitenwischer, Mrs. E. W. Eaton and Mrs. William Geddes, Mrs. Beth Hollidge and Mrs. Edwin Gaunt.

Organization of the Chelsea Flying Club has been announced by a group consisting of G. L. Staffan, Dr. John Doyle, Wallace Franklin, Howard Holmes, and Harold Howe.

Miss Barbara McMahon, home economics teacher at the public schools, has reported that she and her corps of home ec. students packed and shipped 2,222 pounds of clothing, all of which was collected during the Victory Clothing drive held here on Jan. 25.

"Anchors Aweigh" will be presented at the Chelsea High school auditorium. Joseph Bauer will direct. A few of the coming starlets of the cast are John, "String

Bean" Alber as an end man, and Lowell Davison as the captain of the good ship. Others include Rosemary and Theresa Lyons, Maxine Ingram, Marilyn Schooley, Douglas Vogel, Mary Jane Eder.

34 Years Ago . . .

Thursday, Feb. 27, 1936—

Postmaster H. D. Witherell received an order from the 2nd Assistant Postmaster General last week to consolidate the three Chelsea rural routes into two routes.

Probate Judge Jay G. Pray addressed the Kiwanis club Monday evening, discussing the problem of juvenile delinquency in this country.

Dale Claire was in Detroit Tuesday, where he attended a sales meeting of the Kelvinox dealers held at the Detroit LeLand Hotel.

The local fire department was called to extinguish a blaze at the tenant house of H. S. Holmes, east of the mill on North St. The building was occupied by Walter Joseph, Mr. Howard and their families.

Work on the remodeling and redecorating of St. Paul's church was started this week.

Under the National Youth Guidance Administration, Mrs. Kate Hawley has organized four sewing classes which she is conducting weekly at her home on E. Summit St.

Harry Knickerbocker and Arthur Young are feeding the wild life for Ann Arbor Kennel club, the only club of its kind in Michigan, having five members in the Chelsea territory.

Truck Weight Restrictions

The Washtenaw County Road Commission deems it necessary to preserve the roads under the jurisdiction of this Board and by virtue of the applicable sections of the Michigan Vehicle Code being Act 300, Public Acts of 1949 as amended, we impose springtime axle load restrictions effective at 6 a.m. Friday, February 27, 1970.

The allowable truck loadings are as follows:

Spacing Between Axles	MAXIMUM ALLOWABLE GROSS AXLE LOADINGS	
	Concrete	Black-Top & Gravel
9 feet or over	13,500 pounds	11,700 pounds
More than 3 1/2 feet, but less than 9 feet	9,750 pounds	8,450 pounds
When less than 3 1/2 feet the combined weight shall not exceed	13,500 pounds	11,700 pounds
Maximum load on any wheel shall not exceed:		
(pounds per inch of tire width)	525 pounds	450 pounds

MAXIMUM TRUCK SPEED
 No truck tractor or tractor with trailer, nor any combination of such vehicles with a gross weight loaded or unloaded in excess of 5,000 pounds shall exceed a speed of 50 miles per hour which shall be reduced to 35 miles per hour during the period when reduced loadings are being enforced.

Washtenaw County Road Commission

Electric heat . . . the even-tempered heat.

Outside it could be cold on the shady side of the house, colder on the windy side, warmest on the sunny side. But inside—with modern electric heat—you can be cozy and comfortable, just the way you like. All through the house. That's the way it is with electric heat.

Electric heat is the cleanest, quietest, most comfortable heat you can get.

For full details, just call Edison or an Edison-Approved Electric Heat Contractor. Or, mail the coupon below.

So get electric heat. It's ever-ready, always comfortable. On any side of the house.

EDISON

160 Service Building
 2000 Third
 Detroit, Michigan 48226

☐ I'm still nervous about the cost. Send the man anyway.

☐ Don't want to talk to anyone. Just send literature 105C.

Name _____

Address _____

City _____ State _____

Zip _____ Phone _____

Uncle Lew from Lima Says:

DEAR MISTER EDITOR:

The feller that runs the store announced during the session Saturday night that he was coming to town to get a sign made. He said he was going to post cover charges in the store like these city night clubs has. You may say I saw him at yore place this week.

He said Saturday night that he wasn't calling no names, but that he has got regular customers that come in the store, take a seat, reach over and grab a banana, toss the peel on the floor, get an apple and eat it, toss the core down with the banana peel, pinch off a hunk of cheese to go with a handful of crackers and final git so stuffed they got to buy a bottle

of pop to keep from choking. What the store feller said has in mind is a \$5 a night grazing charge, pay in advance. If these customers don't like that system, he said he will put in scales at the door, way in where they come in, way in again when they leave, and set a \$5 a pound fattening fee.

Ed Doolittle, that was munching a handful of grapes and having trouble with the seed and his store bought teeth, told the store feller that he was of the mind that the grazing charge and the fattening fee was mighty big answers to mighty little problems. Ed said he liked a plan with user incentive, as the Government boys say, like a food stamp where regular customers get bonus stamps for Saturday night use with ever \$5 or more grocery order.

Besides, went on Ed, they was more pressing items on the agenda. For instance, Ed said he didn't want to brag, but he was happy to report where the Federal Government had took notice of his advice about the census form to be used this year and they had cut out most of the questions it would take a lawyer, a detective and a lot of help from on high to answer. Ed said the form is bad enuff, but not as bad as it started out.

Another big move Ed reported was where taxpayers this year can use their credit cards. The taxpayer can make out his own ticket, the Government gits the money right away and the taxpayer gits them painless monthly by payments the hole year. Course, allowed Ed, Uncle Sam don't charge but six percent on overdue taxes, and the credit card folks charge 18 percent a year on unpaid balances.

They jest ain't nothing like the American way of life, allowed Ed, and it ain't no wonder this big Knight newspaper chain hired a staff psychologist. We need folks with that kind of training these days to figger out the news, Ed said, and to help newspaper fellers that go off the deep end trying to make sense out of their feller man.

Yours truly,
 Uncle Lew.

MIKE'S TV ANTENNA SERVICE

Motorola Automotive Sound Systems

Winegard Home Electronics TV Antenna Systems

Insurance Claims

For Free Estimate, Call
 Pinckney 878-3258
 or 769-0130

Howell Livestock Auction

The Wise Owl Says Ship to Howell
SALE EVERY MONDAY, 2 p.m.
 Phone 546-2470, Bim Franklin
 Mason 677-8941

Market Report for Feb. 23

CATTLE—

Steers and Heifers:
 Choice, \$30 to \$32
 Good, \$28 to \$30
 Ut.-Std., \$25 to \$28
 Fed Hplsteins, \$24.50-\$27.75

Cows—

Heifers, \$23 to \$25
 Ut.-Comm., \$22 to \$23.50
 Canner-Cutters, \$19 to \$22
 Fat Yellow Cows, \$19 to \$21

Hogs—

Butchers:
 190-lb. to 240-lb., No. 1, \$28.50 to \$29.70
 190-lb. to 240-lb., No. 2, \$27 to \$28.50
 240-lb. and up, \$25 to \$27

Sheep—

Fancy Light, \$24.50 to \$25.50
 300-lb. to 500-lb., \$23.50 to \$24.50
 500-lb. and up, \$22 to \$23.50

Boars and Stags—

All Weights, \$23.50 to \$25.50

Feeder Pigs—

Per Head, \$22 to \$27.50

SHEEP—

Shorn Slaughter Lambs:
 Choice-Prime, \$27 to \$29.50
 Good-Utl., \$25 to \$27

Wooled Slaughter Lambs—

Choice-Prime, \$27.50 to \$29.50
 Good-Utl., \$24 to \$27

Ewes—

Slaughter, \$8.50 to \$11.50

Feeder Lambs—

All Weights, \$26 to \$28

Space Age MASS PRODUCED HOMES

4
 MODERN
 DESIGNS
 MODERATELY
 PRICED

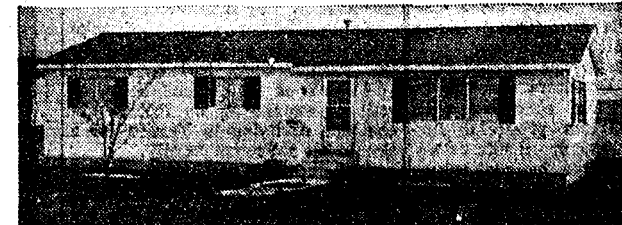
BUY NOW
 for
 Spring
 Delivery
 at
 Present
 Prices

Built to
 Local Specifications

ABSOLUTELY MAINTENANCE-FREE, INSIDE AND OUT, WITH ALUMINUM EXTERIOR AND COMPLETELY paneled interior which will retain its beauty for many years.

Built to
 F.H.A. and FARM HOME
 ADMINISTRATION
 SPECIFICATIONS

FACTORY-BUILT HOMES BY . . . ACTIVE



THE STYLISH CHATEAU DESIGN 51 Feet x 24 Feet (1207 Square Feet)

ALL THESE BIG FEATURES INCLUDED IN PRICE!

- Spacious Living Room, (23' x 14')
- 3 Bedrooms (Master 14' x 12')
- 1 1/2 Baths
- Large Cedar Lined Closets
- Decorator Designed Carpeting and Drapes
- Space Engineered Kitchen with Built-In Appliances
- Also Included . . . Exterior Aluminum Storm Doors, Storm Windows and Screens, Gutters and Down Spouts. (Basement or Crawl Space Models).

TOWN & COUNTRY HOME SALES

2830 East Michigan — Just West of Ridge Road
 Ypsilanti, Michigan Phone 483-7246





CELEBRATING HIS BIRTHDAY is David Lixey, who will be 88 years old Saturday, Feb. 28. Lixey, who lives with his wife, Lois, at 1005 Fahrner Rd., came to Chelsea in 1927. He had been born and raised in Bay City prior to his move to Chelsea. He began work for the Hooper Ball Bearing Co. in 1928 and worked there until his retirement in 1956. Lixey has a son Harvey of Main St. and a daughter, Dorothy, living in Ann Arbor. A dinner celebration is planned for the family.

Fluoride Tooth Treatment Again Offered

Topical applications of fluoride will be offered this summer to Chelsea area children who do not drink the fluoridated community water.

The fluoride program, which is supervised by the Michigan Department of Public Health, will be made available to rural pre-schoolers (three years and over), kindergartners, first, third, fifth, sixth, eighth and ninth graders. This will also include special cases referred by dentists.

According to Mrs. Gary Albrecht, chairman of the program, the procedure consists of four visits to the fluoride clinic at approximately two-day intervals. The child's teeth are cleansed on the first visit and a fluoride solution is applied directly to the surfaces of the teeth. The fluoride application only is then repeated during the three succeeding visits. This technique has been shown to reduce tooth decay by about 40 percent, compared to the 60 to 65 percent reduction obtained with fluoridated water, she said.

In addition to providing protection against cavities, the program offers a valuable dental experience for children with no discomfort. Dental health education by the clinic personnel, including instruction in the proper method of brushing teeth, also is an important part of the program, Mrs. Albrecht said.

Parents of eligible children will be notified through letters brought home by the students on March 2. A fee of \$4 per child, with a special family price of \$14 for four children or more, will be charged to cover the cost of operating the clinic. Payment must be by check or money order and returned with the properly filled out card, no later than March 5.

The schedule for the treatments will be issued by the Dental Division of the Michigan Department of Public Health and will be made known sometime in May. Hopefully, this schedule will be arranged for the early part of the summer, Mrs. Albrecht added. The clinic's hours are tentatively set for 8 a.m. until 4 p.m. and will probably take place at the high school.

Eighth and ninth graders are particularly urged to take advantage of this program as many of them are beginning to consume carbohydrates and plain junk foods, the chairman said. Questions about the fluoride program may be referred to Mrs. Albrecht at 475-7465.

Madrigal Singers . . .

(Continued from page one)
marked that she was "proud of all the soloists and ensembles." Traveling with the 17 students from Chelsea High school choir in addition to Miss L'Roy was Jane Haselschwerdt, who accompanied several students.

Atherosclerosis, the artery-clogging condition that underlies most heart attacks, is just as important in causing stroke, according to the Michigan Heart Association, a Michigan United Fund agency. It causes from 60 to 80 percent of all heart attacks and strokes and sometimes causes both together.



COOKIE SALE: Sue Ann Schuelke, Cindy Shepard and Gail Erke of Junior Girl Scout Troop No. 82 received a cookie order from Charles Lancaster, owner of Chelsea Drug. The Girl Scouts are selling five varieties this year — Sandwich Cremes, Savannahs, Fudge Cremes, Scoot-teas, and Chocolate Mints. The order-taking will continue until March 7.

High School Girls Speak To Kiwanians

Two high school girls spoke before the Kiwanis Club of Chelsea Monday evening, Feb. 23.

Denise Slusser and Barbara Bury, speech class students at Chelsea High school, provided the program, speaking of the need for censorship of the violent and lewd films being presented by the movie industry, and the hope that censorship would not be carried too far.

Two inter-clubs (four or more men from one club) were guests of Chelsea Kiwanians. They included past Lieutenant Governor Jack Thompson, leading a group from Ann Arbor-Western. He was accompanied by Clarence Brewer, Charles Hurkis and Larry Artman. Henman Brower, Charles Parsons, Lewis Wilson, and Roger Katon comprised the group from Ypsilanti.

A director's meeting was held at V. O. Johnson's home Wednesday evening, Feb. 18. That same evening four members of the Chelsea club led by Division 10 inter-club chairman, Clarence Pendley, attended a regular meeting of the Ann Arbor Eastern Club.

Varsity Cagers Storm Past Saline, 66-64

(Continued from page one)

Although Chelsea was outscored by two in the final period, they had played so spectacularly in the third quarter that the Saline spirit had been demolished.

Treado played a fantastic game, scoring a total of 15 points and grabbing a season high of 21 rebounds. Wojcicki scored 24 points and collected nine steals on the press before fouling out.

Ron Sweeney scored nine points and grabbed 10 rebounds while assisting on seven baskets; Jim Conklin hit for nine points and grabbed six rebounds.

Jeff Hughes also did a commendable job on the press, by tallying six counters.

Chelsea's victory gives them a 7-6 conference log and keeps them in a fourth-place tie with Lincoln, one game out of third place.

The Bulldogs travel to Dexter tomorrow night to wrap up their regular season of play. They defeated Dexter in the last contest between the two rivals, 68-66.

BOX SCORE				
	FG	FT	R	P
Treado	5-7	7-11	21	2 15
Wojcicki	10-21	4-6	2 5	24
Sweeney	4-17	1-3	10	2 9
Hercules	0-1	1-3	5	0 1
Hughes	3-6	0-1	4	3 6
Conklin	4-7	1-1	6	2 9
Farley	1-3	0-0	1	0 2
Welton	0-0	0-1	0	0 0

27-65 14-26 49 14 66
Scoring by quarters:
Chelsea 12-16-24-14-66
Saline 17-13-13-16-64
Officials were Howie Ward and Ben Bement.

Telephone Your Club News To GR 5-3581.



MAUSOLEUMS ★ MONUMENTS
BRONZE TABLETS ★ MARKERS
BECKER MEMORIALS
6093 Jackson Road
ANN ARBOR, MICHIGAN



JOHN W. MCGUIRE

Father Sees His Son for First Time At German Airport

Spec. 5 John W. McGuire got to see his five-month-old son, John Jr., for the first time on Wednesday, Jan. 11, when Mrs. John McGuire and son arrived at the Frankfurt Airport in Frankfurt, Germany.

Mrs. McGuire joined her husband, who has been in Germany for 10 months with the 503rd Military Police Company, and will be living with him in Gronau, which is a small town outside of Frankfurt.

Specialist McGuire entered the Army in March of 1968 and received his basic training at Ft. Knox, Ky., and advanced individual training at Ft. Dix, N. J.

The couple was married in September of 1968. Mrs. McGuire is the former Evelyn Rothfuss.

Anyone interested in writing to the couple may address Spec. 5 John W. McGuire, 375-48-3981, 503D MPCO, 8D Armor Division, APO New York 09039.

Jaycee Awards . . .

(Continued from page one)

Those attending from Chelsea were Mr. and Mrs. Art Steinaway, Mr. and Mrs. Tom Thalner, Mr. and Mrs. Dan Eder, Mr. and Mrs. Bob Updegraff, Mr. and Mrs. Ed Greenleaf, Mr. and Mrs. Walt Brown, Si Hopkins, Ron Branham and Don Proctor.

Junior Varsity Defeats Saline Second Time

Chelsea Junior Varsity picked up their 10th conference victory of the season as they defeated Saline, 52-43, last Friday night, Feb. 20.

The Bulldogs JV battled Saline in a close contest through the first three periods and the Hornets threatened to take the game right down to the wire. However, the Chelsea cagers would have no part of it as they scored 18 points in the final period to drop the Little Hornets for the second time this season.

The Bulldogs' offense was led by Jeff Schmidt who hit 11 of 15 from the line and five field goals for a total of 21 points and Greg Howard scoring 15 counters.

Schmidt was high rebounder, grabbing 16, while Jeff Daniels pulled down 10 rebounds in addition to scoring 8 points.

Chelsea again had a solid night from the charity stripe hitting on 18 of 28 attempts for 64 percent. The Bulldog Junior Varsity record now stands at 10-3 in conference play. Chelsea will play Dexter, the only conference team they have not defeated tomorrow night at Dexter at 6:30 p.m.

Day of Prayer . . .

(Continued from page one)

churches of the area, with Mrs. Daniel Kelm, chairman. Participating churches include the United Methodist, Zion Lutheran, St. John's United Church of Christ, St. Mary Catholic, North Lake Methodist, St. Barnabas Episcopal, St. Paul United Church of Christ, and the Congregational United Church of Christ.

Officers elected at the annual meeting of the group in January are Mrs. Howard S. Kern, president; Mrs. Ben Donaldson, vice-president; Mrs. James Hoffmeyer, secretary, and Mrs. Charles Fuhrmann, treasurer.

Any churches of the area interested in becoming affiliated with Church Women United of Chelsea may call Mrs. Howard Kern at 475-8730.

The crab spider gets its name because it runs sideways like a crab.

LYNDON TOWNSHIP BOARD OF REVIEW

Notice is hereby given to all persons liable to assessment for taxes in the

TOWNSHIP OF LYNDON

County of Washtenaw, State of Michigan

That the Assessment Roll of said Township as prepared by the undersigned will be reviewed by the Board at

LYNDON TOWNSHIP HALL

Corner of Old M-52 and North Territorial Road, on

TUESDAY, MARCH 3, 1970

from 9 a.m. to 12 Noon and 1 p.m. to 4 p.m.

Appeals and Conferences with Taxpayers will be heard on

TUESDAY, MARCH 10, 1970

from 9 a.m. to 12 Noon and from 1 p.m. to 4 p.m. of said day, at which time upon request of any person who is assessed on said tax roll or of his or her agent and upon sufficient cause being shown, said Board of Review will correct the assessment as to such property in such manner as will in their judgment make the valuation relatively just and equal.

Such assessment tax roll as reviewed and approved by said Board of Review will be the assessment roll of said Township of Lyndon for the year 1970.

GEORGE F. BAUER, Supervisor

Dated: Feb. 17, 1970.

Get World-Famous AAA Travel Counseling . . . Complete Selection of Escorted Tours . . .

Expert Planning For "Go-Your-Own" World Travel. Ticket Agency For All Air, Rail & Ship Lines

AAA WORLD-WIDE TRAVEL SERVICE
another service of
AUTOMOBILE CLUB OF MICHIGAN
1200 S. MAIN, ANN ARBOR 769-5000

Get A LOOK AT Spring

NEW ARRIVALS . . .

- ★ CLARE TIFFANY DRESSES
 - ★ QUEEN'S CASUAL SLACKS, SKIRTS, SHELLS, DRESSES
 - ★ BOBBIE BROOKS WEAR
- Good selections.

New Gowns, Bra Gowns, Micro Sleep Sets, Matching House Coats and Slips

BIG ASSORTMENT PANTY HOSE

Navy - Black - Go Brown - Go Tawny
\$1.25 - \$1.75 - \$1.99 - \$2.50

Shop Now for Spring at

DANCER'S

Chelsea's Friendly Dept. Store
P.S. — MORE NEW ARRIVALS . . .

Big Selection of Levi Jeans for Gals
All new colors. Sizes 5 thru 8 Petite, 9-11-13 Junior, 10 thru 20 Misses.

VILLAGE ELECTION

To the Qualified Electors:

NOTICE IS HEREBY GIVEN, That an Annual Village Election will be held in the

VILLAGE OF CHELSEA

(Precinct No. 1 and 2)
State of Michigan

— at —
SYLVAN TOWNSHIP HALL

Within said Village on

Monday, March 9, 1970

FOR THE PURPOSE OF VOTING FOR THE ELECTION OF THE FOLLOWING OFFICERS, VIZ:
ONE VILLAGE PRESIDENT (2 years)
ONE VILLAGE TREASURER (2 years)
THREE TRUSTEES (2 years)
ONE ASSESSOR (1 year)
TWO LIBRARY BOARD TRUSTEES (3 years)

Notice Relative to Opening and Closing of Polls

ELECTION LAW, ACT 116, P. A. 1964

SECTION 720. On the day of any election the polls shall be opened at 7 o'clock in the forenoon, and shall be continuously open until 8 o'clock in the afternoon and no longer. Every qualified elector present and in line at the polls at the hour prescribed for the closing thereof shall be allowed to vote.

The POLLS of said election will be open at 7 o'clock a.m. and will remain open until 8 o'clock p.m. of said day of election.

RICHARD HARVEY, Village Clerk

Only Simplicity has Quick-Switch . . . to change attachments in seconds without tools!

- A clip, a pin, and a cotter key. That's all it takes to change attachments with a Simplicity lawn and garden tractor
- There's no fooling around with complicated hitches
- Six models from five to twelve horsepower
- All feature exclusive Non-Scalp mowing and Touch-O-Matic® clutching
- Mower attachments available in twenty-four to forty-eight inch cutting widths
- See all the new Simplicity tractors today!
- Low Down Payments
- Convenient Terms

CHELSEA HARDWARE

110 SOUTH MAIN ST. PHONE GR 9-6311

**Ads
Taken
Till 5 p.m.
Tuesday**

**IT'S EASY TO
BUY-SELL-RENT-
HIRE & FIND WITH**

WANT ADS

**Just
Call
GR 5-3581**

WANT ADS

The Chelsea Standard

WANT AD RATES

PAID IN ADVANCE—All regular advertisements, 50 cents for 25 words or less, each insertion. Count each figure as a word. For more than 25 words add 2 cents per word for each insertion. "Blind" ads or box number ads, 50c extra per insertion.

CHARGE RATES—Same as cash in advance, with 15 cents bookkeeping charge if not paid before 5 p.m. Tuesday preceding publication. Pay in advance, send cash or stamps and save 15 cents.

DISPLAY WANT ADS—Rate, \$1.10 per column inch, single column width only. Separate and 14-point light type.

CARDS OF THANKS or MEMORIALS—Single paragraph style, \$1.00 per insertion for 50 words or less; 2 cents per word beyond 50 words. Minimum, 1 inch.

COPY DEADLINE—5 p.m. Tuesday week of publication.

MOTEL MAIDS, full or part-time, flexible hours. Apply in person to housekeeping department, 8 a.m. to 2:30 p.m. Monday through Friday. Weber's Inn, 3050 Jackson Ave., Ann Arbor. 12tf

Wanted Golf Course Maintenance Help

Good pay. Apply

Ann Arbor Country Club

Please call 426-4303 or 662-3141 between 8:30 a.m. to 4:00 p.m. 36

New Home For Sale

By W. C. Weber Construction Co.

at 13597 Old US-12 E.
3 bedrooms, full basement, 2-car garage, all aluminum exterior, carpeting. Hotpoint stove and refrigerator. 1 acre lot. Natural gas heat. \$25,900 total. \$2,700 down, \$185 per month P. and I.

Home 475-2611.
Office: 475-2823 30tf

Porter's TV Service

Prompt, courteous service on all makes, color, black and white. Repairs done in the home when possible by highly skilled technician.

Day and evening service.

Call 475-8380 39

KNAPP SHOES For Cushion Comfort

FEBRUARY SPECIALS

C-500, C-502, C-503, K-146, K-147, K-8, K-87, K-5.

All Safety Shoes \$2.00 off.

Robert Robbins
475-7282 35tf

All Insurance Needs

In the convenience of your own home — or mine.

N. H. Miles, Allstate

Call GR 5-8334 after 6 p.m. 34

WANT ADS

BOARDING, trimming, training. Town and Country Kennels, Jackson Rd. at Baker. NO 8-7200. 7tf

Gem Travel Trailers and Campers

PICK UP COVERS

4" ————— \$100.00

26" ————— \$179.00 and up

Triangle Sales

Chelsea 475-4302 40tf

REAL ESTATE

Year-round home on Hi-Land Lake. Nice family room and basement. Cash or terms with 7% interest.

Beautiful building site in Lake Moraine Subdivision.

Eugene R. Young
REALTOR

11536 Dexter-Pinckney Rd.
Pinckney, Mich. Phone 878-3792 32tf

WANTED—People to fill out a registration that will give them a chance to win a new Maverick. Feb. 20th to March 20th. Palmer Ford Sales. Phone Chelsea GR 5-3271. 36

A-1 BUYS

'69 Ford 4-dr.
'69 LTD 4-dr.
'68 Chev Sportsvan
'67 Ford Wagon
'67 Thunderbird
'67 Volkswagen
'66 Fairlane Wagon
'66 Galaxie 500 4-dr.
'66 Comet 4-dr.
'66 Ford 2-dr.
'65 Galaxie 500 4-dr.
'65 Galaxie 500 2-dr hardtop
'65 Ford 2-dr.
'65 Pontiac Wagon
'64 Ford 4-dr.
'64 Ford Convertible

TRUCKS

'67 Ford 3/4 Ton Pick-up
'67 Ford 1 Ton Pick-up
'66 Chev 3/4 Ton Pick-up
'65 Ford 3/4 Ton Pick-up

STARTING FRIDAY

The Best Chance
Ever to Win a
New Maverick.
Drop In Our Show Room
and Sign Up.
See the New
GRABBER MAVERICK

PALMER FORD

Open Mon., Wed. & Thur.
Til 9:00
Chelsea GR 5-3271 36tf

New Wallpaper Books

Select Now
for Spring

at
DANCER'S

36

FARM ON SHARES—Hay, for sale, 45¢ a bale cash. Helen Valant, 13050 Sager Rd., Chelsea. Ph. 475-7936. 37

OPPORTUNITY for alert, reliable young woman to assume duties as receptionist for local company. Pleasant personality and typing experience a must. Send resume stating qualifications in care of Chelsea Standard, 300 N. Main St., Box FB-16, Chelsea. 35tf

WANT ADS

Real Estate

BASE LINE LAKE FRONT—Two story, 3-bedroom brick, two years old. Good beach. Two tiled baths, carpeted. Heated insulated garage and workroom. Many extras. \$10,000 down, 7% interest contract.

JUST REDUCED \$4,000 for quick sale. Small cottage with 376-ft. frontage on black-top near Patterson Lake.

Mary Wolter
Real Estate

7421 Dexter-Pinckney Rd.
Dexter 48130
Phone 426-8188 22tf

SPRING SALAD LUNCHEON, March 18, Congregational church. Serving 11 a.m. to 1 p.m. Meet in Dining Room. Bake Sale, Nursery. Tickets: Patty Ann Shoppe, Murphy's Barber Shop, Gambles from Mrs. Collins, Chelsea Drug Store. Donation: \$1.50. 38

Go-Mix Fuel

For All 2-Cycle Engines

White Gas

Available at

Gateway

Sports Centre, Inc. 2tf

Contractor Servicing Chelsea, Dexter and Manchester Areas

Complete Home Remodeling
Inside and Outside
Specializing in extra living space, recreation rooms, kitchens and paneling. Installing all aluminum products, 5" eavestroughs, custom-made awnings, windows and doors, aluminum siding in many selected colors and styles.

Please Call

DALE COOK
Chelsea 475-8863 20tf

WORK SHOE HEADQUARTERS

Famous Red Wing Brand all

seasoned \$12.95 to \$26.95

Foster's Men's Wear 34tf

CAR RENTAL by the day, week, end, week or month. Full insurance coverage, low rates. Call Lyle Christwell at Palmer Motor Sales GR 5-3271. 25tf

W. C. Weber Construction Co. 475-2823 475-2611

Starting our 17th year in building fine homes 29tf

REAL ESTATE

FOR SALE

WASHINGTON STREET—4-bed-

room brick. Large entry with

open stairway, 2 fireplaces, rec.

room with bar and grill.

FAMILY HOME—4-bedroom older

home. Paneled dining room, gas

heat, modern kitchen. \$21,000.

Terms.

BRAND NEW country home. Will

soon be completed. 4-bedrooms,

2 1/2 baths, fireplace. Central air-

conditioning. Over 6 acres. \$58,000.

Buy now. Builder will finish house

to suit you.

2-BEDROOM—Separate dining

room. Aluminum siding. Gas

heat. Garage. \$22,000.

INVESTMENT PROPERTY—7 1/2

acres in the village of Chelsea.

Has village water, electricity and

gas, 745 feet of railroad frontage, 3

bedroom house and garage \$30,000.

Terms.

CLARENCE WOOD

BROKER

646 Flanders St.

Phone 479-4603 36tf

WANTED—People to fill out a

registration that will give them a

chance to win a new Maverick.

Feb. 20th to March 20th. Palmer

Ford Sales. Phone Chelsea GR

5-3271. 36

G. G. HOPPER

Building Contractors

Phone GR 5-5581

Gregory 498-2148 40tf

D. EDWARDS

& SON

Home Maintenance

Service

Vinyl or Aluminum

SIDING - WINDOWS

DOORS

Roofing - Roof Repair

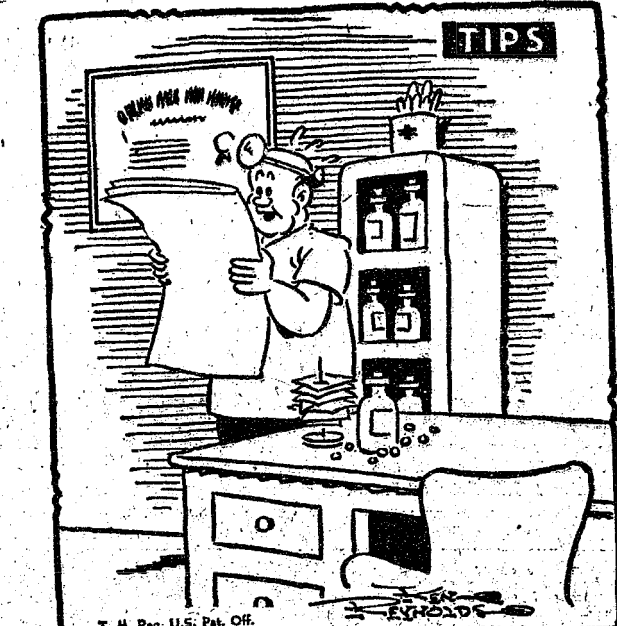
— ALSO —

Building Maintenance

and Supplies

Phone Chelsea 479-4231

or Napoleon 536-4843



"Well! Well! What will they think of next! Here's a TV repairman in the Standard Want Ads that makes house calls!"

WANT ADS

CHELSEA SOCIAL SERVICE has a quantity of bedding and clothing to be given to anyone in need. Office in Municipal Building is open on Tuesdays and Thursdays from 2-5 p.m. 38

Looking for a new home

You Can Afford

1-3 bedrooms.
2-Full basement.
3-Attached two-car garage.
4-Carpeting throughout.
5-Stove and refrigerator furnished.
6-Aluminum siding.

\$19,900 on Your Lot.

Septic system & well not included.

Call for appointment

days or evenings

W. C. Weber Construction Co.

475-2823 475-2611

Starting our 17th year in building fine homes 29tf

REAL ESTATE

FOR SALE

WASHINGTON STREET—4-bed-

room brick. Large entry with

open stairway, 2 fireplaces, rec.

room with bar and grill.

FAMILY HOME—4-bedroom older

home. Paneled dining room, gas

heat, modern kitchen. \$21,000.

Terms.

BRAND NEW country home. Will

soon be completed. 4-bedrooms,

2 1/2 baths, fireplace. Central air-

conditioning. Over 6 acres. \$58,000.

Buy now. Builder will finish house

to suit you.

2-BEDROOM—Separate dining

room. Aluminum siding. Gas

heat. Garage. \$22,000.

INVESTMENT PROPERTY—7 1/2

acres in the village of Chelsea.

Has village water, electricity and

gas, 745 feet of railroad frontage, 3

bedroom house and garage \$30,000.

Terms.

CLARENCE WOOD

BROKER

646 Flanders St.

Phone 479-4603 36tf

WANTED—People to fill out a

registration that will give them a

chance to win a new Maverick.

Feb. 20th to March 20th. Palmer

Ford Sales. Phone Chelsea GR

5-3271. 36

G. G. HOPPER

Building Contractors

Phone GR 5-5581

Gregory 498-2148 40tf

D. EDWARDS

& SON

Home Maintenance

Service

Vinyl or Aluminum

SIDING - WINDOWS

DOORS

Roofing - Roof Repair

— ALSO —

Building Maintenance

and Supplies

Phone Chelsea 479-4231

or Napoleon 536-4843

WANT ADS

PIANO TUNING, Chelsea and area. Facilities for reconditioning and rebuilding. Used piano sales; reconditioned grands and verticals. E. Eklund. 426-4425. 50tf

NIGHT COOK WANTED—Year-round job, paid vacation. Family man only. Top pay for fast, clean cook. See Mr. Goldmann in person, P. J.'s Restaurant, 380 S. State St., Ann Arbor. 3tf

Home Improvement

—House and Floor Leveling
—Additions
—Roofs and Repairs
—Aluminum Siding
—Eavestroughs
—Kitchen Cabinets installed
—Expert Trim Work
—Door Hanging
—Porches, Patios, Sidewalks
—Complete Garages
—Recreation Rooms
—Dropped Ceilings

Call 475-7460

Patrick, Fletcher & Co. 20tf

REAL ESTATE

Do you want a home or cottage on a lake, a farm or country home, a building site? We have them.

Eugene R. Young,
Broker

Phone 878-3792

Mary Allen, 879-3826

Virginia Visel, 426-4659 30tf

SIDING SPECIALIST—Serving

Livingston and adjoining counties

since 1938. Alcoa aluminum siding

and other materials. Remodeling,

covering sills, roof overhang, trim.

Finest workmanship. No estimate

service charge. William Davis, Ph.

(212) 663-6635. 49

ALASKAN MALAMUTE PUP-

PIES for sale, just two left.

Excellent watch-dogs. Have beau-

tiful coats, love to be outdoors.

\$25. Tom Coy, Ph. 426-3359. 36

SELL YOUR:

Home - Farm

Vacant Land

Business

With the Sales Leader in the
Chelsea - Dexter - Ann Arbor Area

Eibler, Frisinger & St. Amour

REALTORS

The Company That

Gets Results!

Call:

Chelsea - 475-8681

Dexter - 426-4659 36tf

REAL ESTATE

WANT ADS

HELP WANTED—The Ann Arbor Ramada Inn is looking for ladies who would like to work as hotel maids. Ask for Mrs. Abram, at 768-0700. 36

HAMMOND ORGAN teachers wanted to teach in their own homes. Call Grinnell Brothers, Ann Arbor, 662-5887. 34tf

ATTENTION Working mothers—Will care for your children in my home while you work. Mrs. Judy Boyer, 475-8055. 29tf

DELICIOUS SMORGASBORD Saturday, Feb. 28, 5 to 7 p.m. Held each month. Adults, \$2.25; children, 75c. United Methodist Church, Napoleon, Mich. 36

WANT ADS

EXPERIENCED PAINTER looking for part-time work. Interior or exterior. Very reasonable, free estimates. 475-7678. 17tf

BILLY WALKER—Popular, powerful Evangelist at the Faith Community church, 8400 Sharon Hollow Rd., Manchester. March 8-15, 7:30 p.m. 37

PRINTING for the wedding—One of the largest assortments in this area. Album prices discounted 10%. John's Shop, call 475-7500. 45

I WISH to baby-sit in my home. Phone 475-7607. 42tf

WANT ADS

LOSE WEIGHT safely with Dex-A-Diet, and remove excess fluid with FLUIDEX. Only 98c and \$1.80 at Chelsea Drug. 44

WANTED—All kinds of standing timber. Will pay top prices. Call (517) 287-5765 or write Al Fee, Hillsdale, Mich., RFD 5, 927 Ball Rd. 37

WANT ADS

FOR SALE—1960 Ford Falcon, runs perfect. Call 475-2820. 36

CLOGGED SEWER

Reynolds Sewer Service

We Clean Sewers Without Digging
Drains Cleaned Electrically
FREE ESTIMATES
2-YEAR GUARANTEE
Phone Ann Arbor NO 2-5277
"Sewer Cleaning Is Our Business—Not a Side Line" 35tf

Band Instruments

Rental-Purchase plan available

Also private lessons (by music major)

Al Nalli Music

Chelsea

Phone 475-7215 35tf

SPECIAL OF WEEK

1970 Olds Cutlass 2-dr. hardtop, automatic trans., power steering. \$2995.00

USED CARS

1968 Buick Special 4-dr. sedan, auto trans., power steering \$1695

1967 Buick Electra 4-dr. sedan \$1995

1967 Buick LeSabre 4-dr. hardtop, air cond., vinyl top \$1895

1967 Delta 88 4-dr. hardtop, air cond. \$1795

1967 Mercury Cougar 2-dr. hardtop, auto trans., vinyl top \$1495

1967 Buick Special 4-dr. sedan, V-8, auto trans., power steering \$1295

1966 Buick LeSabre 4-dr. hardtop, vinyl top \$1295

1966 Chev Impala 2-dr. hardtop \$1195

1966 Ford Fairlane GT \$1195

1966 Chrysler 2-dr. hardtop \$1095

1966 Pontiac Tempest 4-dr. sedan \$995

1965 Buick Skylark 2-dr. hardtop, auto trans., power steering \$895

1965 Buick LeSabre 4-dr. sedan \$795

NEW CARS Inventory Reduction

1970 Delta Royal Holiday Coupe (air cond.) Sale \$4215.37

1970 Delta 88 Holiday Sedan Sticker \$4580.93 Sale \$3763.06

1970 Delta 88 Custom Holiday Sedan Sticker \$4428.93 Sale \$3636.50

1970 Delta 88 Custom Holiday Coupe Sticker \$4382.93 Sale \$3577.06

1970 Delta Holiday Coupe Sticker \$4079.93 Sale \$3341.82

These cars all have automatic transmissions, power steering and power disc brakes. Some have vinyl tops.

Sprague

Buick-Olds-Opel, Inc.

1500 S. Main St., Chelsea

Phone 475-8664

Evening 475-6271 or 475-8240

Open evenings by appointment. 36tf

WOULD LIKE to care for one or two children week-days. Ph. 475-7418. 37

FOR SALE—Clover and timothy hay, mixed, 40 cents a bale. Ph. 428-4734. 37

FOR RENT—Small house. One bedroom, living room, kitchen and full bath. Just remodeled and redecorated. New carpeting, \$130 per month. No pets. 479-4608. 36

FOR SALE—Hoover spin dry washer. 946 Ridge Rd., or phone 479-4491. 37

Chest Committees

(Continued from page one)

Nominating—Conrad Hafner, Lyle Christwell, Joyce Schneider, Norma Popovich, Gerald Wenk.

Budgeting—Vivian Michelson and Norma Popovich, co-chairmen; Patricia Baldwin, James Liebeck, Robert Thornton, Sherri Plank, Tony Bowen.

Finance—James Liebeck, Kenneth McDowell, Elmer Kiel.

County Planning Council—Elmer Kiel and Margaret Kuhl.

American Red Cross representatives—Robert Thornton and Lu Muck.

Michigan United Fund budget committee representatives—James Liebeck (1971), Tony Bowen, L. D. Guinan.

Public relations—Joyce Schneider and Ann Schafner.

The age-corrected death rate from strokes declined by 21 percent between 1950 and 1967, according to the Michigan Heart Association, a Michigan United Fund agency. It attributes the drop to new medical and surgical treatment resulting from research.

YES

WE ARE MAKING
LONG-TERM FARM
REAL ESTATE
LOANS

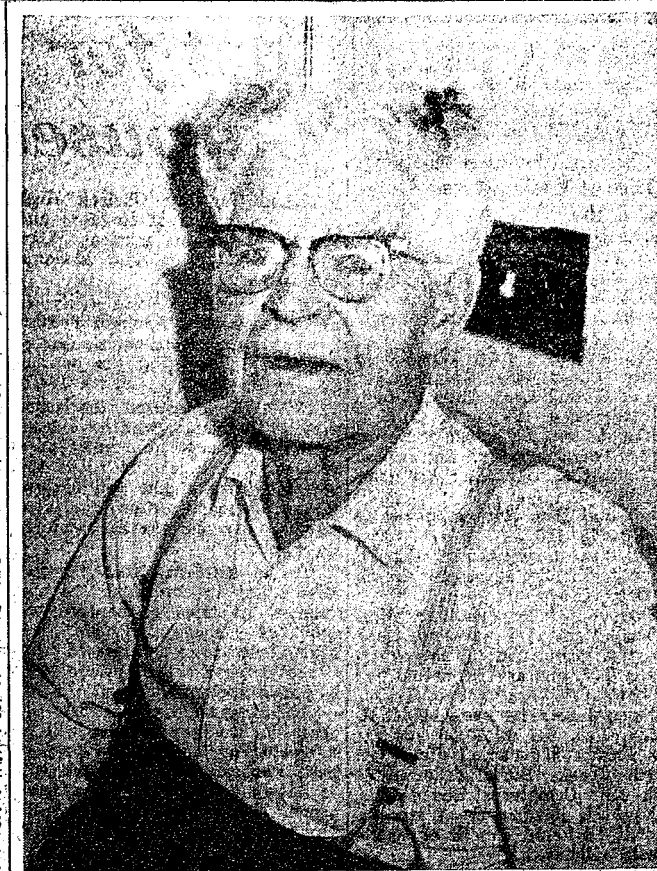
SEE US

**Federal
LAND BANK
Association**

Ann Arbor, Mich. 48103

P. O. Box 1005

Ph. 769-2411 8645 Jackson Rd.



MEMBERS OF HIS FAMILY and friends of Fredrick Hadley attended an Open House in his honor to celebrate his 90th birthday Sunday, Feb. 15. Hadley has been living in the area for his entire lifetime. In addition to his four sons, Harry, Lawrence, Eugene, and Wilfred and his two daughters, Mary Schryer and Ruth Davey, he has 37 grandchildren and 37 great-grandchildren. After a family dinner, cake and coffee was served during the afternoon with the daughters and daughters-in-law acting as hostesses.

School Board Briefs

Board of Education meeting, Monday, Feb. 23.

Present: Storey, Haselschwerdt, Koenig, Irwin and Hopkins. Superintendent Cameron, Business Manager Mills, Principals Lane, Conklin, Wojcik, and Benedict, and Assistant Principal Fauble.

Guests were Mary K. Weber and Cheryl Pursel.

Meeting called to order by President Irwin at 8 p.m. Minutes of the

Feb. 2 meeting approved as presented.

Motion by Hopkins, supported by Storey, to pay General Fund bills of \$17,449.73. All ayes.

Motion by Koenig, supported by Haselschwerdt, to accept the recommendations for new appointments to the Agricultural Advisory Council. New appointments are Ralph McCalla, Gerald Straub, Loren Hinderer, and William Van Riper. Board delegates are Jay Hopkins and Charles Powers.

An extended discussion was held regarding board policies on transportation, school employee retirement, inter-scholastic athletics and physical education, and the acceptance of non-resident students.

Motion by Koenig, supported by Haselschwerdt, to direct the superintendent to review the foregoing policies and differentiate between board policy and administrative rules and regulations. All ayes.

Board of education concurred with the dress code as jointly developed by the student council, parents and administration.

Motion by Haselschwerdt, supported by Koenig, to go into executive session at 10 p.m. All ayes.

Meeting called back to order at 12:40 a.m.

Terms of the administrative contracts were discussed in detail with no final action taken. Meeting adjourned at 2 a.m.

RISKY BUSINESS

Bankrupt companies during the 76-year history of American automobile manufacturers total approximately 1,500.

Trucks with less than 3 1/2 feet spacing between the axles shall not exceed 13,500 pounds of weight on concrete and 11,700 pounds of weight on black-top or gravel roads. The maximum load on any wheel shall not exceed 525 pounds on concrete and 450 pounds on black-top and gravel.

No truck or tractor with trailer, nor any combination of such vehicles with a gross weight loaded or unloaded in excess of 5,000 pounds shall exceed a speed of 50 miles per hour which shall be reduced to 35 miles per hour during the period when reduced loadings are being enforced, according to the Washtenaw County Road Commission.

Maximum allowable gross axle loadings for 9 feet or over spacing between the axles on trucks is 13,500 pounds on concrete and 11,700 pounds on black-top or gravel roads. For trucks with spacing between axles of more than 3 1/2 but less than 9 feet, weight restrictions are no more than 9,750 pounds on concrete and 8,450 pounds on black-top and gravel roads.

The deadline for hauling heavy loads over county roads is tomorrow, Friday, Feb. 27 at 6 a.m. At that time the truck weight restrictions will go into effect for all roads under the Washtenaw County Road Commission's jurisdiction.

The George Hafley Family

I wish to thank all my friends for the beautiful plants, gifts, and cards, and Marion Klein Circle for the flowers and their prayers during my three-week stay in the hospital recovering from surgery. Also, my neighbors for the food which was sent to my husband and aunt while I was gone and since my return home. Everything is very much appreciated.

Mrs. Elwyn Beach.

THANK YOU

We would like to thank Dr. Joseph Fisher and the staff of the Cedar Knoll Rest Home for the kindness and excellent care they gave our father during his illness. We would also like to express our deep gratitude to Pastor Warner Schryer for his prayers and support during this difficult time.

These kind acts have brought comfort and kind sympathy after our father's death.

Arthur W. Grau.

THANK YOU

We would like to thank Dr. Joseph Fisher and the staff of the Cedar Knoll Rest Home for the kindness and excellent care they gave our father during his illness. We would also like to express our deep gratitude to Pastor Warner Schryer for his prayers and support during this difficult time.

These kind acts have brought comfort and kind sympathy after our father's death.

Arthur W. Grau.

THANK YOU

We would like to thank Dr. Joseph Fisher and the staff of the Cedar Knoll Rest Home for the kindness and excellent care they gave our father during his illness. We would also like to express our deep gratitude to Pastor Warner Schryer for his prayers and support during this difficult time.

These kind acts have brought comfort and kind sympathy after our father's death.

Arthur W. Grau.

THANK YOU

We would like to thank Dr. Joseph Fisher and the staff of the Cedar Knoll Rest Home for the kindness and excellent care they gave our father during his illness. We would also like to express our deep gratitude to Pastor Warner Schryer for his prayers and support during this difficult time.

These kind acts have brought comfort and kind sympathy after our father's death.

Arthur W. Grau.

THANK YOU

We would like to thank Dr. Joseph Fisher and the staff of the Cedar Knoll Rest Home for the kindness and excellent care they gave our father during his illness. We would also like to express our deep gratitude to Pastor Warner Schryer for his prayers and support during this difficult time.

These kind acts have brought comfort and kind sympathy after our father's death.

Arthur W. Grau.

THANK YOU

We would like to thank Dr. Joseph Fisher and the staff of the Cedar Knoll Rest Home for the kindness and excellent care they gave our father during his illness. We would also like to express our deep gratitude to Pastor Warner Schryer for his prayers and support during this difficult time.

These kind acts have brought comfort and kind sympathy after our father's death.

Arthur W. Grau.

THANK YOU

We would like to thank Dr. Joseph Fisher and the staff of the Cedar Knoll Rest Home for the kindness and excellent care they gave our father during his illness. We would also like to express our deep gratitude to Pastor Warner Schryer for his prayers and support during this difficult time.

These kind acts have brought comfort and kind sympathy after our father's death.

Arthur W. Grau.

THANK YOU

We would like to thank Dr. Joseph Fisher and the staff of the Cedar Knoll Rest Home for the kindness and excellent care they gave our father during his illness. We would also like to express our deep gratitude to Pastor Warner Schryer for his prayers and support during this difficult time.

These kind acts have brought comfort and kind sympathy after our father's death.

Arthur W. Grau.

THANK YOU

We would like to thank Dr. Joseph Fisher and the staff of the Cedar Knoll Rest Home for the kindness and excellent care they gave our father during his illness. We would also like to express our deep gratitude to Pastor Warner Schryer for his prayers and support during this difficult time.

These kind acts have brought comfort and kind sympathy after our father's death.

Arthur W. Grau.

THANK YOU

We would like to thank Dr. Joseph Fisher and the staff of the Cedar Knoll Rest Home for the kindness and excellent care they gave our father during his illness. We would also like to express our deep gratitude to Pastor Warner Schryer for his prayers and support during this difficult time.

These kind acts have brought comfort and kind sympathy after our father's death.

Arthur W. Grau.

THANK YOU

We would like to thank Dr. Joseph Fisher and the staff of the Cedar Knoll Rest Home for the kindness and excellent care they gave our father during his illness. We would also like to express our deep gratitude to Pastor Warner Schryer for his prayers and support during this difficult time.

Life of John Philip Sousa Documented on TV Show

East Lansing—"The March King: John Philip Sousa" documents the life of the versatile composer-conductor on "NET Festival," Sunday, March 1, at 1 p.m. on WMSB (Channel 10), Michigan State University television.

Using both old library film and musicians who played under Sousa's baton, the documentary traces the life of Sousa from 1854 to 1932. The famed "Sousa Sound" is recreated from a specially augmented Detroit Concert Band under the direction of Dr. Leonard

Playing in the reconstructed band are such notables as Bill Bell, one of the conductor-composer's most famous sousaphone players. Also included are commentaries by Leopold Stokowski, who knew and frequently conducted his music; George Balanchine,

whose ballet "Stars and Stripes" is set to Sousa's music; Lt. Col. Sir Vivian Dunn, for 38 years principal musical director of the Royal Marines, and Mrs. Helen Sousa Albert, Sousa's only surviving daughter. Sir Arthur Bliss, Master of the Queen's Music, recalls Sousa's conducting in London at the Royal Albert Hall.

Other WMSB highlights include: "NET Journal" challenges U.S. globalism with the biting question, "Who Invited US?" Sunday, March 1, at 4:30 p.m.

Historically, the program reviews U.S. military interventions from Teddy Roosevelt's triumphant ascent of San Juan Hill to the Marines' entry into the Dominican Republic. Also featured is an examination of the economical and political "roots of future Viet-

nams."

Not too many days ago, we ushered in a New Year. With age old custom many people mullied over personal faults in the closing days of the old and resolved to do certain things better, or at least differently, in the new year. If a tabulation was made, it would probably be proved that multitudes of people resolved to stop smoking. An enormous number of people pledged to indulge in more leg exercise with less hand to mouth action to cut down on calories and lose weight. Again, if tabulations were made, it would probably be proved that most of these, and other well intentioned resolutions have by now been broken or forgotten.

There is one resolution every one can make EVERY day — and keep. Make it a daily habit to think of TWO of your blessings for every ONE gripe or complaint. Since the good things in life far outnumber the bad breaks, this can be an easy resolution to keep. Fact is, instead of just thinking about the two for one; give silent thanks. Nothing is ever so bad in life that it can't be worse and that in itself is a good thing in life to be thankful for. This easy to keep daily resolution can change an entire view of life. Try it and see. . . . BURGHARDT

FUNERAL HOME, 214 East Middle St., Chelsea, Mich. Phone GR 5-4141.

TODAY'S THOUGHT

By LOUIS BURGHARDT

Not too many days ago, we ushered in a New Year. With age old custom many people mullied over personal faults in the closing days of the old and resolved to do certain things better, or at least differently, in the new year. If a tabulation was made, it would probably be proved that multitudes of people resolved to stop smoking. An enormous number of people pledged to indulge in more leg exercise with less hand to mouth action to cut down on calories and lose weight. Again, if tabulations were made, it would probably be proved that most of these, and other well intentioned resolutions have by now been broken or forgotten.

There is one resolution every one can make EVERY day — and keep. Make it a daily habit to think of TWO of your blessings for every ONE gripe or complaint. Since the good things in life far outnumber the bad breaks, this can be an easy resolution to keep. Fact is, instead of just thinking about the two for one; give silent thanks. Nothing is ever so bad in life that it can't be worse and that in itself is a good thing in life to be thankful for. This easy to keep daily resolution can change an entire view of life. Try it and see. . . . BURGHARDT

FUNERAL HOME, 214 East Middle St., Chelsea, Mich. Phone GR 5-4141.

TODAY'S THOUGHT

By LOUIS BURGHARDT

Not too many days ago, we ushered in a New Year. With age old custom many people mullied over personal faults in the closing days of the old and resolved to do certain things better, or at least differently, in the new year. If a tabulation was made, it would probably be proved that multitudes of people resolved to stop smoking. An enormous number of people pledged to indulge in more leg exercise with less hand to mouth action to cut down on calories and lose weight. Again, if tabulations were made, it would probably be proved that most of these, and other well intentioned resolutions have by now been broken or forgotten.

There is one resolution every one can make EVERY day — and keep. Make it a daily habit to think of TWO of your blessings for every ONE gripe or complaint. Since the good things in life far outnumber the bad breaks, this can be an easy resolution to keep. Fact is, instead of just thinking about the two for one; give silent thanks. Nothing is ever so bad in life that it can't be worse and that in itself is a good thing in life to be thankful for. This easy to keep daily resolution can change an entire view of life. Try it and see. . . . BURGHARDT

FUNERAL HOME, 214 East Middle St., Chelsea, Mich. Phone GR 5-4141.

TODAY'S THOUGHT

By LOUIS BURGHARDT

Not too many days ago, we ushered in a New Year. With age old custom many people mullied over personal faults in the closing days of the old and resolved to do certain things better, or at least differently, in the new year. If a tabulation was made, it would probably be proved that multitudes of people resolved to stop smoking. An enormous number of people pledged to indulge in more leg exercise with less hand to mouth action to cut down on calories and lose weight. Again, if tabulations were made, it would probably be proved that most of these, and other well intentioned resolutions have by now been broken or forgotten.

There is one resolution every one can make EVERY day — and keep. Make it a daily habit to think of TWO of your blessings for every ONE gripe or complaint. Since the good things in life far outnumber the bad breaks, this can be an easy resolution to keep. Fact is, instead of just thinking about the two for one; give silent thanks. Nothing is ever so bad in life that it can't be worse and that in itself is a good thing in life to be thankful for. This easy to keep daily resolution can change an entire view of life. Try it and see. . . . BURGHARDT

FUNERAL HOME, 214 East Middle St., Chelsea, Mich. Phone GR 5-4141.

TODAY'S THOUGHT

By LOUIS BURGHARDT

Not too many days ago, we ushered in a New Year. With age old custom many people mullied over personal faults in the closing days of the old and resolved to do certain things better, or at least differently, in the new year. If a tabulation was made, it would probably be proved that multitudes of people resolved to stop smoking. An enormous number of people pledged to indulge in more leg exercise with less hand to mouth action to cut down on calories and lose weight. Again, if tabulations were made, it would probably be proved that most of these, and other well intentioned resolutions have by now been broken or forgotten.

There is one resolution every one can make EVERY day — and keep. Make it a daily habit to think of TWO of your blessings for every ONE gripe or complaint. Since the good things in life far outnumber the bad breaks, this can be an easy resolution to keep. Fact is, instead of just thinking about the two for one; give silent thanks. Nothing is ever so bad in life that it can't be worse and that in itself is a good thing in life to be thankful for. This easy to keep daily resolution can change an entire view of life. Try it and see. . . . BURGHARDT

FUNERAL HOME, 214 East Middle St., Chelsea, Mich. Phone GR 5-4141.

TODAY'S THOUGHT

By LOUIS BURGHARDT

Not too many days ago, we ushered in a New Year. With age old custom many people mullied over personal faults in the closing days of the old and resolved to do certain things better, or at least differently, in the new year. If a tabulation was made, it would probably be proved that multitudes of people resolved to stop smoking. An enormous number of people pledged to indulge in more leg exercise with less hand to mouth action to cut down on calories and lose weight. Again, if tabulations were made, it would probably be proved that most of these, and other well intentioned resolutions have by now been broken or forgotten.

There is one resolution every one can make EVERY day — and keep. Make it a daily habit to think of TWO of your blessings for every ONE gripe or complaint. Since the good things in life far outnumber the bad breaks, this can be an easy resolution to keep. Fact is, instead of just thinking about the two for one; give silent thanks. Nothing is ever so bad in life that it can't be worse and that in itself is a good thing in life to be thankful for. This easy to keep daily resolution can change an entire view of life. Try it and see. . . . BURGHARDT

FUNERAL HOME, 214 East Middle St., Chelsea, Mich. Phone GR 5-4141.

TODAY'S THOUGHT

By LOUIS BURGHARDT

Not too many days ago, we ushered in a New Year. With age old custom many people mullied over personal faults in the closing days of the old and resolved to do certain things better, or at least differently, in the new year. If a tabulation was made, it would probably be proved that multitudes of people resolved to stop smoking. An enormous number of people pledged to indulge in more leg exercise with less hand to mouth action to cut down on calories and lose weight. Again, if tabulations were made, it would probably be proved that most of these, and other well intentioned resolutions have by now been broken or forgotten.

There is one resolution every one can make EVERY day — and keep. Make it a daily habit to think of TWO of your blessings for every ONE gripe or complaint. Since the good things in life far outnumber the bad breaks, this can be an easy resolution to keep. Fact is, instead of just thinking about the two for one; give silent thanks. Nothing is ever so bad in life that it can't be worse and that in itself is a good thing in life to be thankful for. This easy to keep daily resolution can change an entire view of life. Try it and see. . . . BURGHARDT

FUNERAL HOME, 214 East Middle St., Chelsea, Mich. Phone GR 5-4141.

TODAY'S THOUGHT

By LOUIS BURGHARDT

Not too many days ago, we ushered in a New Year. With age old custom many people mullied over personal faults in the closing days of the old and resolved to do certain things better, or at least differently, in the new year. If a tabulation was made, it would probably be proved that multitudes of people resolved to stop smoking. An enormous number of people pledged to indulge in more leg exercise with less hand to mouth action to cut down on calories and lose weight. Again, if tabulations were made, it would probably be proved that most of these, and other well intentioned resolutions have by now been broken or forgotten.

There is one resolution every one can make EVERY day — and keep. Make it a daily habit to think of TWO of your blessings for every ONE gripe or complaint. Since the good things in life far outnumber the bad breaks, this can be an easy resolution to keep. Fact is, instead of just thinking about the two for one; give silent thanks. Nothing is ever so bad in life that it can't be worse and that in itself is a good thing in life to be thankful for. This easy to keep daily resolution can change an entire view of life. Try it and see. . . . BURGHARDT

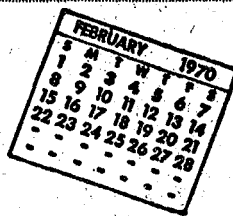
FUNERAL HOME, 214 East Middle St., Chelsea, Mich. Phone GR 5-4141.

TODAY'S THOUGHT

By LOUIS BURGHARDT

Not too many days ago, we ushered in a New Year. With age old custom many people mullied over personal faults in the closing days of the old and resolved to do certain things better, or at least differently, in the new year. If a tabulation was made, it would probably be proved that multitudes of people resolved to stop smoking. An enormous number of people pledged to indulge in more leg exercise with less hand to mouth action to cut down on calories and lose weight. Again, if tabulations were made,

Community Calendar



Chelsea Co-Op Nursery Open House Sunday, March 8, 2 to 4 p.m., at Nursery School on Chelsea-Dexter Rd., midway between Chelsea and Dexter. Public invited. Bring children to give them an opportunity to see the school facilities. Refreshments will be served.

St. Mary's Altar Society Communion Sunday, 8 a.m. Mass March 1. Regular monthly meeting Monday, March 2, 8 p.m., in school hall. Bring items of new clothing for Pope's Storehouse (infants through age 12). Speaker, Earl J. Hill. Members of area churches invited to attend.

American Legion Auxiliary, Tuesday, March 3, Sylvan Town Hall, 8 p.m.

Order of the Eastern Star, regular meeting, Wednesday, March 4, 7:30 p.m., Masonic Temple.

Gospel Trio, featuring Stubb brothers and Karen; North Sharon Bible church, Saturday March 7, 7:30 p.m. Everybody invited.

Olive Lodge No. 156 F&AM, March 3, 7:30 p.m.

The Volunteer Services Department of St. Joseph Mercy Hospital announces a new series of volunteer classes for adults, to be held March 2, 3, and 4. Men and women, including retirees, who would like to serve others through hospital volunteering may attend morning or evening classes and should call the hospital volunteer office, 665-4141, to register.

Ann Arbor Chapter of "Parents Without Partners" monthly meeting, Friday, Feb. 27, at St. Andrew's Episcopal church, N. Division St., Ann Arbor at 8:15 p.m. Guest speaker, Richard S. Benedikt from the Friend of the Court, who will discuss his work.

American Legion and Auxiliary hospital equipment available by contacting either Mr. or Mrs. Eugene Martin, at 475-5867 after 4 p.m.

TOPS: Club at library, Wednesday afternoon group, 12:30 p.m. For information call 475-2592. Thursday evening group, 7 p.m. For information call 475-8720.

Inquiries regarding the Chelsea blood bank may be directed to Harold Jones, at Cavanaugh Lake in the event that Mrs. Dudley Holmes is unavailable.

BIRTHS

A son, Scott Allan, to Mr. and Mrs. Lawrence Wheeler, Jr., Friday, Feb. 20 at St. Joseph Mercy Hospital, Ann Arbor. Mrs. Wheeler is the former Jane Lounsberry. The child's grandparents are Mr. and Mrs. Lawrence Wheeler, Sr. of Whitmore Lake and Mr. and Mrs. Elwood Lounsberry, Sr. of Hell. Mrs. Mabel Lounsberry of Lincoln St., is the maternal great-grandmother.

DEATHS

Mrs. Karl Ranger Chelsea Woman's Mother Dies at Ypsilanti Rest Home

Mrs. Bertha D. Ranger, 84, formerly of Chelsea, the widow of Karl F. Ranger, died at Sunnyview Convalescent Home Wednesday, Feb. 18, in Ypsilanti, where she had been a patient for one and one-half years.

She was born Aug. 17, 1885 in Battle Creek, the daughter of Frank C. and Lena Chilson Root. She attended Albion College, where she was a member of Kappa Alpha Theta sorority. She moved to Detroit shortly after her marriage.

Mr. and Mrs. Ranger moved to Chelsea in 1957.

She was a member of the St. Mark Methodist Episcopal church in Detroit.

Surviving is a daughter, Mrs. Albert (Marion) Genovese of Chelsea, two grandchildren, one great-grandchild, and several nieces and nephews.

Funeral services were held Saturday, Feb. 21, at 10:30 a.m. at the Farley Funeral Home in Battle Creek. Burial followed at Oak Hill Cemetery. The pastor, Erhard H. Bekemeyer of the St. Mark's Lutheran church of Battle Creek officiated.

E. Breitenwischer Former Chelsea Resident Dies Thursday in Ann Arbor

Emerson H. Breitenwischer, who lived in Chelsea prior to his marriage, died suddenly Thursday morning, Feb. 19, after collapsing at his home, 3124 Sunnywood, Ann Arbor.

Born Sept. 27, 1902, in Bridge-water, he was a son of Herman and Caroline Mayer Breitenwischer and was married Nov. 14, 1929, to Ella Herman. She survives.

He was a member of Zion Lutheran church, Ann Arbor, the Brotherhood of the Church and served on the Church Council. He was also a member of Elks Lodge 325. Mr. Breitenwischer had been employed by the American Broach for 37 years.

Survivors in addition to his widow, are a son, Dale, of Ann Arbor; one granddaughter, a sister, Mrs. Alvin (Lillian) For, and two brothers, Wilbert and Clarence, all three of Chelsea; and several nieces and nephews.

Funeral services were held at 2:30 p.m. Saturday at the Muehl Funeral Chapel, Ann Arbor, with the Rev. Ralph B. Piper officiating and burial followed in Washington Memorial Park.

Open House Held at Newly Remodeled Village Beauty Salon

Winners of a free hairdo at the Village Beauty Salon, which held its re-modeling open-house last Sunday, Feb. 22, have been announced by Mr. and Mrs. Gerald (Loretta) Pannone, owners of the salon.

Receiving the wash and sets are Mrs. Hal Pennington, Mrs. Michael Eubanks, Mrs. Sam Howard and Lona Patrick, all of Chelsea; and Donna Roehm of Clinton.

The open house was held to display to the public the new Mediterranean motif of the Village Beauty Salon at 109 N. Main St.

MOST POPULAR MODELS
Model agencies report that their most popular female models average 5 feet 8 inches in height and weigh 112 pounds.

Cast for CHS Musical 'Carousel,' Rehearsing Daily

Tickets for the Chelsea High school production of Rodgers and Hammerstein's hit musical, "Carousel," will go on sale Monday, March 2.

"Purchase of tickets early is not a bad idea," suggests Miss DiAnn L'Roy, vocal music director, who is directing the production to be presented March 19-21.

Miss L'Roy praised the more than 100 students, who have been working to make the musical a success. She especially noted the unique nature of the set, designed by Caryl Thornton and constructed under the direction of Ron Bush.

"It's abstract in nature," began Miss L'Roy in describing the set, "and we've tried to capture the spirit of the play with it. The basic structure is a series of platforms rising from the floor to a height of eight feet.

"The circular shape suggests the carousel. Different locales will be suggested by appropriate properties. For example, the park will be shown by the use of a park bench. The effect is symbolic rather than literal," continued Miss L'Roy.

Special lighting under the direction of Rod Powers will add to the total effect of the staging.

Seniors Chris Alber and Dan Wenk will play the leads in the show, Julie Jordan and Billy Bigelow, whose ill-fated love causes Billy's death and Julie's unhappiness.

"Carousel," which marks the third production for Chris, is the high school's fourth musical. Chris was seen last year in the school's production of "The Music Man" as Marian, the female lead.

"Chris is a polished actress, who brings real depth to her performance," lauded Miss L'Roy.

"Dan Wenk's performance as Billy Bigelow marks his first for Chelsea High school, although he has played in the orchestra in previous years," continued Miss L'Roy. "The role of Billy is a demanding one, and Dan seems to be bringing much to it and doing a good job of creating the character," she concluded.

Comic relief is provided by the production with the characters Carrie and Mr. Snow, portrayed by seniors Pat Gilbert and sophomore Keith Pfeifle. The villain, Jigger, is played by junior Larry Gorton. Sophomore Jeanne Hasel-schwartz performs the role of Cousin Nellie. Junior Laurie Lancaster is seen as Louise. Billy and Julie's daughter, Pearl, is played by senior Julie Jordan.

There are more than 40 other persons who make up the remainder of the cast. The scenes in which they appear are perhaps the most memorable in the production, notes Miss L'Roy, who mentioned the musical numbers "If I Loved You," "June Is Busting Out-All Over," and "You'll Never Walk Alone" as especially memorable.

The pit orchestra, consisting of 24 performers, will add to the musical numbers.

A souvenir program, which includes information on leads and pictures of rehearsals, will be given to all ticket holders. The program cover, being prepared by Kathy Susner, is done in the symbolic nature of the sets, with a circular motif suggestive of a

carousel with shadow horses. Publicity posters, under the charge of publicity co-ordinator Kathy Grob, continue the abstract mood. Other student chairmen are: Barb Harvey, costumes; Ann Trav-lis, make-up; Claudia Devine, props; and Caryn Thornton, student director.

Tickets may be purchased at the CHS Administration Building, or by calling Brenda Seitz at 475-3461. All seats are reserved for the three 8 p.m. performances.

WANT CASH?

Let me check your attic, garage, basement, shed, barn and cupboards. You have no idea what we will buy. We need anything old.

CALL BRUCE WAGGONER. 426-8482

HOUSE OF ANTIQUES

8081 Main St., Dexter, Mich.

AN OPEN LETTER TO ANYONE INTERESTED IN KITCHENS

We have just completed the installation of six kitchens in our "ALL NEW" Kitchen Center. You would enjoy just browsing around and getting ideas for your own home.

The orange plaid carpeting in the Bar Unit sets off the hand-rubbed, solid oak cabinets; it's interesting to see how the electric "char-grill", the under-counter refrigerator, and the special bar cabinets have been placed to make an ideal recreation room addition.

Or, the stark white features, including the lamp post eating counter, contrasting with the raised panel doors finished in antique olive make another kitchen a must to see.

And then, there is the Spanish Kitchen with that "just-so" Mediterranean look, the complete Formica Kitchen highlighted in orange and white, and the Candlelight Kitchen with the black panoramic stove.

Believe Me—there's more, too. If you're a would-be designer or decorator—come and browse awhile. You'll be glad you did.

Or, if you ever do consider remodeling your kitchen, please shop our new kitchen center first. We have budget priced cabinets and top quality cabinets that are the very best—all tastefully displayed.

Sincerely,

Robert Daniels

CHELSEA LUMBER COMPANY
DIAL GR 5-3391

SPECIAL

thru Wednesday, March 4, 1970

HOT DOG FRIES & SHAKE 79¢

Home of fine Brazier foods.

Dairy Queen
brazier
S. MAIN ST., CHELSEA

GAMBLES

CREST-Premium Wide Tread Tires CLOSE OUT - PRICED TO SELL!

STOP When You Have To - GO When You Want To!

Up To 7.4" Tread Width

CREST W.T. GUARANTEE
Guaranteed without limit as to months or miles used against failure due to defects in materials and workmanship or road hazards for the life of the tread. Adjustments will be pro-rated on treadwear. Should the W.T. wear out within 4 winter seasons, we will replace it at the current regular price plus tax, less a \$6.00 allowance.

SAVE

Per Pair from
our Regular
Low Price!

\$12.00

WHITEWALLS
At Blackwall Price

FREE
INSTALLATION!

BUY NOW and SAVE!
Guaranteed 4 Full Winters.
Never Priced Lower!

SIZE	REPLACES	REG.	SALE	P.E. TAX Per Tire	SIZE	REPLACES	REG.	SALE	P.E. TAX Per Tire
E70-14	735x14	\$22.45	\$19.45	\$2.39	F70-15	775x15	\$23.95	\$20.95	\$2.61
F70-14	775x14	23.95	20.95	2.58	G70-15	815x15	25.95	22.95	2.78
G70-14	825x14	25.95	22.95	2.73	H70-15	845x15	27.45	24.45	2.93
H70-14	855x14	27.45	24.45	2.94	J70-15	885x15	28.45	25.45	3.09

AGRICULTURE IN ACTION

by GARY A. KLEINHENN
Michigan Farm Bureau

★ Farm Chemicals Face Challenge

Agriculture is in action to safeguard the nation's health and is continually on guard for the safe use of pesticides. Farmers are not alone in this cause. In Michigan there are several existing programs related to pesticide management that, for public information, need to be recognized.

a) There is the Michigan Department of Agriculture which enforces pesticide laws, such as registration and licensing of applicators, and co-operates with related state departments. It is also responsible for the testing of public food supplies to determine pesticide residues.

b) The Michigan Department of Public Health establishes threshold exposure limits for workers in all state industries manufacturing or packaging pesticides. Training courses are given for personnel using or controlling pesticides, and certain health protection aspects of rural pesticide use under the control of this department.

c) The Michigan Department of Natural Resources has responsibilities for protection of the natural resources against pollution by pesticides. The department on its own and in co-operation with the state universities and the U. S. Department of Interior conducts research on and provides documentation for the effects of pesticides on fish and wildlife. The Water Resources Commission monitors pesticide concentration and movement in waterways, detects pollution and enforces water quality standards.

d) Michigan State University Pesticides Research Center provides facilities for research on pesticides in 16 departments. Based on this research, the Co-operative Extension Service then conveys to the public the recommendations of the MSU research staff for use of pesticides.

e) The state departments of Agriculture, Natural Resources, and Public Health and the Water Resources Commission have entered into an inter-agency Pesticides Review Agreement in order to provide opportunity for evaluation and discussion of economic poisons marketed in Michigan.

f) The Advisory Committee on Economic Poisons, created by legislative action, is composed of the directors of the departments of Natural Resources and Public Health, the Aeronautics Commission, the MSU Pesticide Research Center and the executive secretary of the Water Resources Commission.

Frank Abdon, Grandson Honored on Birthdays

Frank Abdon, who is 88 years old today, and a grandson, Robin Wright, who was 29 yesterday, were honored at a joint birthday dinner on the birthday of another gentleman, George Washington.

The two were honored Sunday, Feb. 22, at Lima Community Hall by approximately 40 members of their family who attended the birthday dinner from Chelsea, Saline, Ypsilanti, and Lexington, Ky.

Mrs. Ronald Gentner of Ypsilanti, a granddaughter of Mr. Abdon's, baked and decorated the chocolate and vanilla birthday cake given to the two birthday celebrants.

Both Mr. Abdon and Robin received many cards and gifts in honor of their birthdays.



Executives and Professional people... are sometimes victims of million dollar lawsuits. Protect yourself with **Auto-Owners UMBRELLA POLICY**

A. D. MAYER AGENCY, INC.

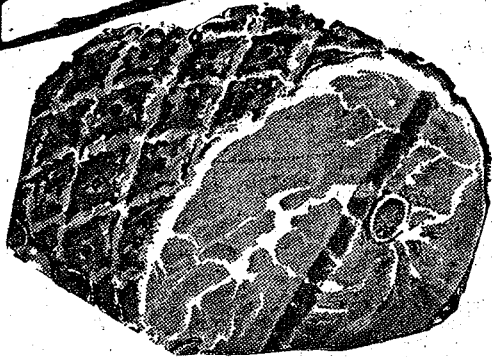
"Your Protection Is Our Business"
115 Park St. Chelsea
Phone 479-5061

Auto-Owners INSURANCE COMPANY
Home office at Lansing, Michigan

THE SUPERMARKET THAT'S JUST A LITTLE BIT BETTER

Stop & Shop

14901 Old U.S.-12
Corner at M-52
Chelsea



Farmer Peet's Semi-Boneless

HAMS

★ Hickory Smoked Half or Whole
★ Fully Cooked
★ De-Fatted **89¢ lb.**

THE KNOW HOW OF INTELLIGENT MEAT BUYING IS REALLY THE 'KNOW WHERE'

Our customers have learned to depend on the outstanding quality of Stop & Shop meats — unfailing satisfaction with every cut they purchase. The finest quality, together with the expertise of our meat cutting experts, makes an unbeatable combination.

Prices Effective Wednesday, February 25th
thru Tuesday, March 3rd, 1970.

STOP & SHOP

EST. 1949

21st Anniversary Sale

To Our Many Friends,
Thank You!

Join Us for Coffee and Cake

Thursday, Friday, Saturday, Feb. 26-27-28

"Triple R Farms" U.S.D.A. Choice Boneless Round Steak \$1.19^{lb.}	"Triple R Farms" U.S.D.A. Choice Rib Steak .99^{lb.}	"Triple R Farms" Mich. Grade 1 Skinless Wieners .59^{lb.}
Shop & Shop's Fresh, Lean, All-American Beef Hamburger .59^{lb.}	"Triple R Farms" U.S.D.A. Choice Chuck Steaks .79^{lb.}	"Triple R Farms" Mich. Grade 1 Sliced Bologna .59^{lb.}
"Triple R Farms" U.S.D.A. Choice Boneless Rolled Rump or Sirloin Tip Roast \$1.29^{lb.}	Lean, Tender, Boneless & Cubed Pork Cutlets .89^{lb.}	Tender, Sliced Beef Liver .49^{lb.}
Fresh, Lean, Ideal for Low Fat Diets Ground Round Steak .89^{lb.}	Lean, Tender, Boneless Stewing Beef .99^{lb.}	Swift Premium Sliced Bacon .89^{lb.}
Tender, Delicious Cube Steaks \$1.29^{lb.}	Lean, Tender, Meaty Pork Steaks .79^{lb.}	"Triple R Farms" U.S.D.A. Choice Sirloin Steak \$1.29^{lb.}

Crispy Flake
Potato Chips

14 oz. bag **39¢**

McDonald's Fresh Delicious

Ice Cream
half gallon **59¢**

McDonald's Flavor Fresh
Cottage Cheese

1-lb. ctn. **19¢**

McDonald's 2% Low Fat

Fresh Milk
gallon carton **69¢**

Domino Fine Granulated

SUGAR

5-lb. bag **49¢**

Kraft's Salad Dressing

Miracle Whip
qt. jar **49¢**

Treesweet Fresh Frozen Florida

Orange Juice
6-oz. can **15¢**

Kraft's Cheese

Velveeta
American or Pimento 2-lb. loaf **99¢**

McDonald's Low-Fat Fruit Flavored

Yogart
a sundae in a cup 8-oz. ctn. **5 for \$1**

Farm Fresh Produce

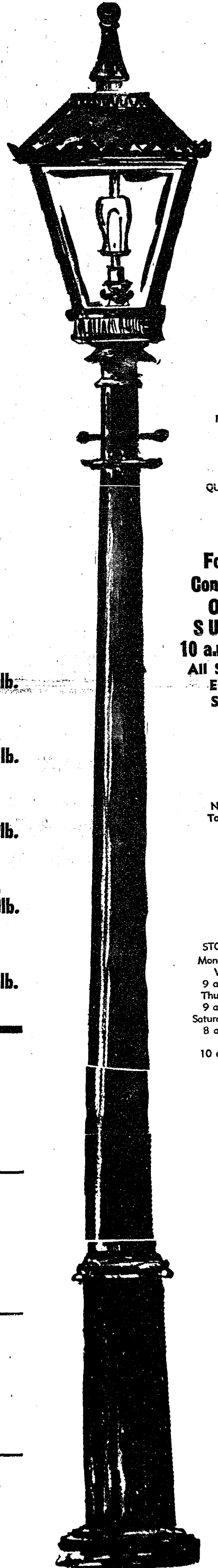
Golden Ripe	BANANAS	Lb.	10¢
California Iceberg	HEAD LETTUCE	Solid Heads Ea.	19¢
Florida Seedless	GRAPEFRUIT	5-Lb. Bag	49¢
U.S. No. Michigan	POTATOES	10-Lb. Bag	59¢

WE
RESERVE
THE
RIGHT
TO
LIMIT
QUANTITIES

For Your
Convenience
**OPEN
SUNDAY**
10 a.m. - 6 p.m.
All Sale Prices
Effective
Sundays

Sorry,
No Sales
To Dealers

STORE HOURS:
Monday, Tuesday,
Wednesday
9 a.m. - 6 p.m.
Thursday, Friday
9 a.m. - 9 p.m.
Saturday New Hours
8 a.m. - 7 p.m.
Sunday
10 a.m. - 6 p.m.





BOWLING NEWS

Charlie Brown and Snoopy's Friends

Standings as of Feb. 21

	W	L
Groovy Tootie Fruities	41	25
The Blue Ribbons	38	28
Mark III	37	29
Archies	36 1/2	29 1/2
Banana Splits	33	33
Merdilizers	31 1/2	34 1/2
Snoopy Stars	31	35
Snoopy's	31	35
Purple Passions	30 1/2	35 1/2
Chargers	30	36
Good Guys	30	36
Rolling Stones	23 1/2	42 1/2
200 series: J. Sweet, 203; D. Alber, 249; D. Messner, 248; S. Klink, 227; J. Elkins, 233; M. Boyer, 220; M. Burnett, 237; J. Colliers, 237; S. Bowen, 257; R. Guenther, 234; G. Haller, 262; P. Greenleaf, 278; D. Elisele, 230; S. Lyster, 240; M. Pennington, 212; M. Bowen, 248; D. Craft, 317; D. Morrison, 249; D. Elisele, 260; K. Harris, 206; R. Collins, 269; D. Akin, 201; S. Palmer, 275; K. Toon, 210; T. Greenleaf, 206; R. Haller, 211; D. Craft, 300.		
100 games: S. Palmer, 100-175; D. Akin, 102; T. Greenleaf, 115; R. Heller, 102; C. Snyder, 109; D. Craft, 137-163; K. Steinaway, 101; K. Toon, 125; C. Sannes, 109; J. Sweet, 100-103; D. Alber, 145-104; D. Messner, 111-130; S. Klink, 144-133; J. Elkins, 116-117; M. Boyer, 114-106; M. Foster, 117; J. Boyer, 108; M. Burnett, 136-111; J. Colliers, 123-114; S. Bowen, 129-128; R. Guenther, 143; B. Bennett, 100; G. Haller, 109-153; P. Greenleaf, 126-152; A. Houle, 119; M. Cameron, 113; D. Elisele, 133; S. Lyster, 124-116; M. Pennington, 112-100; D. Seyfried, 103; M. Bowen, 124-119; D. Craft, 157-160; S. Schulze, 100; D. Morrison, 120; D. Elisele, 150-110; K. Harris, 102-104; R. Collins, 166-103.		

Chelsea Lanes Mixed

Standings as of Feb. 20

	W	L
Devine & Brink	107	61
Chelsea Lanes	101 1/2	66 1/2
H. & H.	96	72
Rabbitt & Althouse	94	74
Ann Arbor Centerless	89	79
Lyndon Color Lab	86	82
Wolverine Pav. No. 3	86	82
Doody & Turner	79	89
Wolverine Pav. No. 2	74	94
Fitzsimmons Excav.	73	95
Barclay & Gephart	69 1/2	93 1/2
Heint & Weiss	59	115
Men, 500 series: R. Brink, 222-206; J. Harmon, 222; A. Sannes, 216; E. Keezer, 214.		
Women, 450 series: N. Althouse, 483; L. Doody, 475; P. Fitzsimmons, 471; E. Brink, 470; A. Turner, 470; P. Poertner, 463; J. Hutzel, 458; M. Heim, 456; E. Harmon, 456; L. Alexander, 452.		
Women, 150 games: P. Fitzsimmons, 201; M. Heim, 182-154; A. Turner, 179-155; J. Hutzel, 174-156; N. Althouse, 171-164-152; P. Poertner, 170; F. Gephart, 170; S. Klink, 170; H. Morgan, 169; L. Doody, 168-168; L. Alexander, 168-158; E. Brink, 165-159; M. Ritter, 163-150; E. Harmon, 156-153; R. Devine, 155; M. Robertson, 152.		

HELLER ELECTRIC & INSULATING

Licensed Electrical Contractor

ALL TYPES OF WIRING

THERMTRON

INSULATION

Call After 5 p.m.

475-7978

20640 Sager Rd., Chelsea

Junior House League

Standings as of Feb. 19

	W	L
The Pub Bar	109	45
Chelsea Dug	109	45
J & S Tool Co.	88	66
Boyer Automotive	86	68
Mid-State Finance	81	73
3-D Sales & Service	80	74
FireLite Inn	75	79
Palmer T-Bird	66	87
Gambles	61	87
Ann Arbor Centerless	59	95
Jiffy Mixes	55	99
200 games and over: T. Wisniewski, 212-238; P. Boham, 200-233; D. Boven, 231-210; W. Beeman, 223; A. Fletcher, 219; R. V. Worden, 217; N. Fahrner, 216; N. Packard, 201-212; A. Peterson, 207; R. H. Ringe, 205; R. Feldkamp, 201; C. Koengeter, 201; L. Salyer, 201.		
600 series and over: T. Wisniewski, 642; D. Boven, 604.		
500 series and over: R. V. Worden, 588; W. Beeman, 587; C. Koengeter, 586; R. H. Ringe, 571; L. Salyer, 571; N. Packard, 569; N. Fahrner, 563; P. Boham, 554; S. Hopkins, 550; D. Buku, 548; A. Fletcher, 548; J. Harook, 539; R. Erskine, 532; K. Larson, 530; E. Buku, 523; A. Peterson, 517; D. Scott, 517; S. Policht, 510; R. Feldkamp, 507; R. Schenk, 504; A. Sannes, 503; J. Myning, 503; T. Stepp, 501.		

Senior House League

Standings as of Feb. 23

	W	L
Chelsea Grinding	63	37
Schneider's Grocery	58 1/2	41 1/2
The Pub Bar	57	42
Spaulding Chevrolet	55 1/2	44 1/2
Chelsea Cleaners	54 1/2	45 1/2
Dana No. 1	52	47
Seitz's Tavern	52	48
Sylvan Center	49 1/2	50 1/2
Murphy's Barber Shop	43 1/2	56 1/2
North Lake S & S	42	57
Wolverine Bar	40	60
Dana No. 2	36 1/2	63 1/2
600 series: J. Warmingham, 666; N. Fahrner, 661; H. Burnett, 601; T. Wisniewski, 617.		
500 series: A. Clemes, 579; B. Moss, 541; D. Coppennoll, 546; R. Knickerbocker, 537; G. Burnett, 514; G. Knickerbocker, 519; D. Bayer, 557; G. Lawrence, 521; L. Keezer, 517; G. Linebaugh, 528; R. Bauer, 513; J. Harmon, 528; N. Eiseaman, 527; T. McClellan, 504; A. Schiller, 529; C. Gensko, 511; D. Ewald, 525; R. Kiel, 511; R. Spaulding, 517; M. Poertner, 542; R. Fike, 533; S. Hopkins, 550; A. Sannes, 508; G. Weir, 565; W. Griffith, 510.		
200 games: D. Bauer, 228; E. Keezer, 200; R. Bauer, 215; J. Warmingham, 238-225-205; D. Coppennoll, 207; A. Clemes, 209; H. Burnett, 212; R. Fike, 206; W. Moats, 212; W. Griffith, 204; S. Hopkins, 201; G. Weir, 202; N. Fahrner, 223-213-225; D. Ewald, 210; T. Wisniewski, 235; A. Schiller, 201.		

Nite Owl League

Standings as of Feb. 23

	W	L
Foster's Men's Wear	62	38
Gallup-Silkworth	56 1/2	43 1/2
Jack & Son Barbers	56	44
Smith-Douglass	52	48
Waterloo Garage	51 1/2	48 1/2
Merlot Bros.	51	49
The Profs	48	52
Wahl's Dinos	48	52
Town & Country Shell	46 1/2	53 1/2
Cavanaugh Lake Store	45 1/2	54 1/2
Willie's Pave	44	56
Smith's Mobil	38 1/2	61 1/2
500 series: G. Schiller, 573; R. Kotar, 558; E. Buku, 534; G. Rent-schler, 523; R. Nix, 520; K. Kartka, 519; P. Smith, 512; R. Green, 510; R. Sarler, 500; P. Wade, 508.		
200 games: R. Kotar, 213-202; R. Green, 210; R. Sadler, 204; G. Schiller, 209.		

Rolling Pin League

Standings as of Feb. 24

	W	L
Moppy Uppers	60	40
Kookie Kutters	58	42
Jolly Mops	57	43
Grinders	52 1/2	47 1/2
Kitchen Kapers	52 1/2	47 1/2
Egg Beaters	50	50
Spooners	49 1/2	50 1/2
Coffee Cups	46 1/2	53 1/2
Mixers	45	55
Brooms	43 1/2	56 1/2
Dish Rags	43	57
Fots	42 1/2	57 1/2
140 games and over: D. Keezer, 140; P. Harook, 177; W. Landwehr, 164; G. Brier, 151-158; J. Rabbitt, 168-190-182; E. Wilber, 150; P. Borders, 145; G. Weiner, 167-163; S. Parker, 190-147; K. Bretschneider, 142; K. Del Prete, 158-147; Polly Patterson, 144-149-145; E. Harmon, 144-157; Pat Patterson, 160; A. Steinaway, 144; D. Butler, 159-173-158; E. Miller, 145; T. Steinaway, 150; S. Cattell, 141; E. Whitaker, 150; A. Ellola, 145; H. Ringe, 161-143-164; M. Scott, 144-144; B. Updegraff, 142; R. Barstow, 147; J. Lewis, 148-161-146; G. Klink, 161-154; G. Blaess, 152-149-161; E. Williams, 149-151; J. Edick, 151; M. Cook, 147-141; J. Priest, 157; J. Freeman, 146.		
400 series and over: P. Harook, 434; G. Brier, 417; J. Rabbitt, 540; B. Wilber, 415; G. Weiner, 467; P. Borders, 415; S. Parker, 467; K. Del Prete, 420; E. Harmon, 412; J. Rowe, 401; D. Butler, 490; H. Ringe, 468; M. Scott, 419; J. Lewis, 455; G. Klink, 434; G. Blaess, 462; E. Williams, 421; Polly Patterson, 438; J. Edick, 412; M. Cook, 409; J. Priest, 408.		
Splits converted: J. Priest, 4-5; E. Williams, 5-10; 5-7; M. Cook, 3-10; M. Holloway, 6-10; G. Blaess, 5-7; H. Ringe, 3-7; E. Miller, 4-5; 7; D. Butler, 6-8-10; E. Harmon, 3-10, 3-10; Polly Patterson, 3-10, 4-5, 4-10.		

Guys & Gals

Mixed League

Standings as of Feb. 19

	W	L
Murphy's Barber Shop	59 1/2	28 1/2
The Pub No. 2	54	34
The Good Guys	51	37
Ken's Standard Service	50 1/2	37 1/2
Gallup-Silkworth	46 1/2	41 1/2
Team No. 2	43	46
The Pub No. 1	41	47
Chelsea Lanes	39	49
The Spoilers	38	50
The Sandbaggers	37	51
Nam. Quik-Corp.	35	53
Pleasant Lake Resort	33 1/2	54 1/2
Women's games 150 and over: G. Foster, 170; N. Packard, 151-164; P. Haas, 176; B. Smith, 166-170; P. Pardon, 155; N. Thompson, 169; D. Sannes, 154; E. Kotar, 166; P. Elliott, 169; S. Walton, 195; D. Hughes, 168-151; C. Timmerman, 169; E. Koengeter, 165; B. Fritz, 207-174; S. Greenleaf, 153; K. Hanke, 150.		
Women's series 425 and over: G. Foster, 444; N. Packard, 450; D. Haas, 454; B. Smith, 470; P. Pardon, 438; E. Kotar, 444; S. Walton, 469; D. Hughes, 466; C. Timmerman, 445; B. Fritz, 516; K. Hanke, 431.		
Men's games 175 and over: J. Collins, 177-183; J. Eder, 177-183; N. Eiseaman, 193; R. Buss, 179; K. Pardon, 189-210; S. Dyer, 189-184; R. Mock, 179; H. Kunzelman, 180-185; A. Sannes, 183; R. Kotar, 177-191; J. Elliott, 176; D. Buku, 192; E. Buku, 212; O. Timmerman, 178-178; E. Greenleaf, 198; R. Green, 202.		
Men's series 500 and over: J. Collins, 517; J. Eder, 531; N. Eiseaman, 508; K. Pardon, 500; S. Dyer, 549; H. Kunzelman, 521; R. Kotar, 517; E. Buku, 541; E. Greenleaf, 531; R. Green, 523.		

Junior Swingers

Standings as of Feb. 21

	W	L
Pin Busters No. 1	55 1/2	27 1/2
Team No. 10	50	34
Pin Busters No. 2	47	37
Sandbaggers	46	38
Ball Bearings	45	39
The Sophomores	45	39
Towns People	44	40
Waterloo Teens	43	41
Fritz's Pros	42	42
Bowlers Bazaar	29 1/2	52 1/2
Tangle Foot Trio	28	52
All American Flips	26	54

Games over 140: C. Cameron, 170; P. Case, 157-177; B. McGuire, 142-145; L. Hafner, 148; K. Sannes, 156; D. Buxton, 165; R. Foystik, 143; F. Tanner, 188; J. Pearsall, 146-140; J. Bennett, 150; J. Schiller, 147; B. McNutt, 169.

High series over 425: P. Case, 461; F. Tanner, 438.

MID-STATE FINANCE CORP.

\$25 to \$1,000

For Any

Worthwhile Purpose

See or Call

FRANK HILL

at 475-8631

111 PARK STREET

CHELSEA, MICH.



Need A Room? A Standard Want Ad Can Help!

Tri-City Mixed League

Standings as of Feb. 20

	W	L
Sprague Buick & Olds	54 1/2	45 1/2
Smith's Mobil	54	46
Foor Mobil	53 1/2	46 1/2
3-D Sales & Service	53 1/2	46 1/2
Trail Blazers	52	48
Jiffy Mixers	51 1/2	48 1/2
Wolv. Tall & Small	51 1/2	48 1/2
Chelsea Cleaners	50 1/2	49 1/2
Wolv. Early Birds	50 1/2	49 1/2
Eibler & Frisinger	47 1/2	52 1/2
Odd Balls	45	55
Clear Lake	38	64
500 series, men: C. Detting, 508; R. Fouty, 521; O. Johnson, 539; A. Kaiser, 512; H. Kunzelman, 525; A. Sannes, 512; A. Wisniewski, 538.		
200 games, men: O. Johnson, 201; H. Kunzelman, 201; A. Wisniewski, 205.		
450 series, women: G. Detting, 468; D. Fouty, 459; R. Johnson, 487; N. Miller, 468; C. Stoffer, 505; M. Weston, 450.		
150 games, women: V. Allen, 150; L. Cole, 152; G. Detting, 178-158; D. Fouty, 157-159; R. Fouty, 152; A. Hocking, 158; R. Johnson, 178-164; B. Kunzelman, 160; N. Miller, 167-164; C. Peterson, 179; M. Sawdy, 151; C. Stoffer, 179-180; M. Weston, 160.		

Old Timers League

Standings as of Feb. 20

	W	L
Nelson Realtors	58	42
Colonial Lanes	57	43
Bob & Otto	55	45
Washburn Lanes	55	47
Great Lakes	52	48
Mather Co.	52	48
Veterans Cab	50	50
Chelsea Lanes	49 1/2	50 1/2
Hotzel Service	49	51
Cloverleaf Lanes	46 1/2	53 1/2
Stein & Goetz	46	54
Hartman Ins.	32	68
High team game and series: Nelson Realtors, 865-2,521.		

High Ind. game and series: H. Vick, 219-559.

Other 200 games and 500 series and over: D. Peden, 213-560; E. Yek, 202-202-555; J. Otto, 204-557; W. Hayhow, 212-555; A. Weber, 205-529; D. Packard, 204-529; C. Whitehead, 529; W. Tyrakowski, 521; N. Wenk, 519; L. Dann, 200-536; W. Wysocki, 217-555; E. Armbruster, 201-540; C. Fagin, 525; G. Hager, 513; P. Johnson, 513; J. Zucco, 508; L. Dell, 508; P. Grabowski, 524; H. Mummery, 517; R. Liddicoat, 208; W. Holcombe, 202; H. Grossman, 500; W. Finsch, 500.

Nelson Realtor and Stein & Goetz won three games.

Chelsea Suburban

Standings as of Feb. 18

	W	L
Foor Mobil	60 1/2	31 1/2
Dana Corp.	54	38
Dairy Queen Braizers	54	38
Patty Ann	50 1/2	41 1/2
G. A. Sales	48 1/2	43 1/2
Artex Roll-Ons	43 1/2	48 1/2
Pittsfield Plastics	42 1/2	49 1/2
State Farm	42	50
Waterloo Garage	41	51
G. E. Girls	39 1/2	52 1/2
Dancer's	38 1/2	53 1/2

Tax Deadline Is Saturday

Chelsea area residents have just a few more days to pay their local taxes which fall due the last day of the month, Saturday, Feb. 28.

Local taxpayers in Lima, Lyndon, and Sylvan townships must pay their local taxes to their respective township treasurers by that date, or delinquent penalties will be assessed by the county.

Washtenaw county places a one-half percent assessment of the original tax on delinquent taxes per month delinquent in addition to the state's 4 percent delinquent collection fee.

Taxes to Mary Clark, Lyndon township treasurer may be paid to her at her home at 11437 Boyce Rd., Grass Lake, between 1-5 p.m. Hilda Pierce, Lima township treasurer, will receive taxes at the Chelsea State Bank on Friday, Feb. 27.

Sylvan township taxpayers may reach treasurer Fred W. Pearsall Monday through Friday from 8 a.m. to 5 p.m. at 103 N. Main or from 9 a.m. to 6 p.m. on Saturday, Feb. 28 at the same address.

In addition to local taxes, dog licenses must be paid to the township treasurers on or before Sunday, March 1, to avoid penalty.

CUB SCOUT NEWS

DEN 1, PACK 415—
We talked about George Washington at our Tuesday, Feb. 24 meeting.

Don Hulett was absent. Our den mother, Mrs. George Adkins is in the hospital, and we met at the home of Mrs. Blaine Lyle. We discussed our trip to the Detroit Metropolitan Airport on Sunday, Feb. 22 and each of us told what we enjoyed the most about the trip. Mr. Hulett, the father of one of our cubs in our den who is a pilot for North Central Airlines, made all the plans for us to go.

We made get-well cards for our den mother and treats were served by Kevin Lyle.

Kevin Lyle, scribe.

DEN 13, PACK 435—
Wednesday, Feb. 18, members of Den 13, met at the home of our den mother, Mrs. Clyde Myers assisted by Mrs. Arthur Steinway.

We played a game and had treats provided by Kirk Myers. We made place cards and nut cups for the Blue and Gold Banquet on Thursday, Feb. 26.

Alfred Schmidt, scribe.

DEN 1, PACK 455—
Den 1 met Feb. 19 with our den mother, Mrs. Burgess.

We played some games before the flag ceremony. David Baldwin carried the American flag and Billy Burgess carried the Den flag.

Cubs started making place cards for their families for the Blue & Gold Banquet.

Steve Schanz conducted the games. Leon Wheeler brought the treats and we closed with the living circle.

David Baldwin, scribe.



DISTRICT CHAMPS: Jaycee District 26 has been conquered by Chelsea Jaycees! The championship basketball team defeated Saline 86-66 in the semi-finals and Ypsilanti 86-74 in the finals held in Dexter on Saturday, Feb. 21. Jim Cameron was the high scorer in the Saline game with 19 points, followed by Curt Farley and Captain Chuck Mattoff with 16 points each. Farley led the scoring in the Ypsi game with 36 points. Pictured with the district trophy are from the left, back row, Coach Walt Brown, Cameron, Tom Steele, and Don Proctor. Seated in the front from the left are Farley, Don Joseph, Mattoff, Ed Windell, and Chuck Koenig. Chelsea will be playing in the Michigan State Jaycee Tournament being held in Saginaw on Saturday, Feb. 28.

Tuberculin Tests Offered Ninth Graders

The annual ninth grade school tuberculin testing program sponsored by the Washtenaw County Health Department in co-operation with the Medical Society and Tuberculosis and Health Association will be held in area schools from March 2 to March 17. Dr. Otto K. Engelke, County Health Director, has urged parents of all ninth grade students to sign request cards to insure tuberculin testing. No charge is made for this program.

Date assigned to both Chelsea High school and Dexter High school is Wednesday, March 11.

The tuberculin test is a simple skin test on the forearm which can detect tuberculosis germs in the body. The results of the skin test are read two or three days after the initial tests. A positive skin test does not mean that a person has active tuberculosis. It does mean that further studies are needed. Arrangements for further examinations of children with positive tests and follow-ups of their families will be made by the Health Department.

Dr. Winthrop Davey from the University of Michigan Medical Center and president of the Michigan Tuberculosis and Respiratory Diseases Association said, "Ninth grade students have been selected because the bulk of the teen-agers are still in school at this time. Testing students of this age level provides an indirect index of the TB problem in their families and in the community. Testing of ninth graders also will indicate progress toward the national goal of no more than 1 percent reactors among 14-year-olds."

Dr. Davey praised the annual testing program in Washtenaw county and noted that for the first time during 1970, TB testing of ninth graders will be carried out throughout Michigan.

An estimated 4,100 ninth graders are enrolled in Washtenaw county schools. The tests are administered by a team from the Southeastern Michigan Tuberculosis Detection Project. Dates and locations of the testing program in addition to the March 11 date at Chelsea and Dexter are: March 2, West Ypsilanti Junior High school; March 3, Ypsilanti East Junior High school, Willow Run High school; March 4, Lincoln Consolidated High school and St. John's High school in Ypsilanti; March 9, in Ann Arbor, Slauson Junior High school, Manchester High school; March 10, Milan High school, St. Thomas High school in Ann Arbor and Whitmore Lake High school; March 16, in Ann Arbor, Tappan Junior High school and Saline High school; March 17, Forsythe Junior High school and Scarlett Junior High school in Ann Arbor.

Drug Abuse Talk Given for Several Area Groups

Patrolman Louis Schneider of the Chelsea Police Department has presented his illustrated talk on drug abuse to several area groups during the past week.

Schneider, who received the narcotics demonstration kit, complete with pictures and samples, from the Kiwanis Club in January, spoke to the Boy Scouts and the PTO at the Gregory elementary school.

Schneider also attended a narcotics school on Thursday, Feb. 19 in Mason. The school, sponsored by the Bureau of Narcotics and Dangerous Drugs, was held in Ingram county to further the knowledge of law enforcement officers both for their own professional work as law officials and to transmit to others.

Schneider is available with the informative presentation by contacting the Chelsea Police Department. Schneider and the police department offer the presentation as a public service in the police department's efforts to curb drug abuse.

Max Plank Presenting Saxophone Recital Sunday at EMU

Max Plank, 148 Van Buren, instructor in the Department of Music at Eastern Michigan University, will present a recital of music for saxophone on Sunday, March 1 at 8 p.m. in Pease Auditorium.

Plank, who will be accompanied at the piano by Elaine Jacobson, is assistant director of bands at EMU. Miss Jacobson is also an instructor in the department of music.

Assisting on the program will be violinist David Litven, pianist Maribeth Gunning, and clarinetist Marion D. Schrock from the University of Michigan. Professors Robert Qualye and Marvin C. Howe of EMU will also assist.

Plank, who received his degrees from Kansas State Teachers College at Emporia, Kans., is presently a doctoral candidate at the U-M. He is a student of Larry Teal and has studied with Jean-Marie Londeix of Dijon, France.

The public is invited.

UNUSUAL INSPIRATION

Samuel Clemens' literary career was started when a page from the story of Joan of Arc was blown in his path by a light breeze. As Mark Twain, Clemens wrote 23 books. Most popular of the group were Huckleberry Finn and Tom Sawyer.

An estimated 1,200,000 Americans now living have survived a stroke, and many are back at work, says the Michigan Heart Association, a Michigan United Fund agency.

First Robin of '70 Season Reported By Mrs. Wencil

Honor of reporting the first robin of the 1970 season in the Chelsea area goes to Mrs. Joseph (Dorothy) Wencil who called The Standard office last week. She said she sighted the robin on her front lawn at 19278 North Territorial Rd., two weeks ago and again on Wednesday, Feb. 18.

Some authorities claim there are robins who winter in area marshes and other sheltered spots and whether this one is one of those or one who traveled north ahead of time and made his appearance here early, he is a welcome harbinger of spring "just around the corner."

JCs Organizing Chapter at Stockbridge

For the past few months the Chelsea Jaycees have been busy planning, promoting and encouraging the young men of Stockbridge to start a Jaycee Chapter. On Feb. 11 Chelsea Jaycees held an "M" night membership drive in Stockbridge and signed up 11 charter members. A second membership drive was planned for Wednesday night, Feb. 25, in the hopes of completing the signing of 25 members required for a chapter charter.

At the Feb. 11 "M" night Chelsea Jaycees presented a program that included a slide presentation on the purpose of Jaycees, Chelsea Jaycee history and the needs for a Jaycee Chapter in Stockbridge. Guest speaker for the evening was Don Wrench, state executive vice-president of the Michigan Jaycees. The meeting concluded with the explanation of member dues, question and answer period and refreshments.

If all goes well the Chelsea Jaycees plan to have the Stockbridge chapter night April 4.

4-H Clubs

WATERLOO CLUB
Waterloo 4-H club held their monthly meeting Feb. 19 with the Gibbreaths acting as hosts. President Wesley Schulz called the meeting to order. Mrs. Bott announced that the American Legion is giving the club a new flag.

Entertainment for achievement was discussed and a committee was appointed to decide upon a skit. It was announced that Gun Safety is going to be a summer project this year.

The meeting was adjourned by repeating the 4-H pledge.

Tracy Lewis, reporter.

Subscribe today to The Standard!

CREDIT PROBLEM? NO PROBLEM!

CONTACT MR. SMALL CREDIT ADVISOR at

HENDERSON FORD
665-0871
Ann Arbor

Band Boosters Start Birthday Calendar Sale

Chelsea Band Boosters will begin their compilation and selling drive for their Community Birthday Calendars on Sunday, March 1.

The Birthday calendars, which are to be printed in August, list school activities, club meetings, and personal birthdays and anniversaries and should be ordered now for delivery in August.

The boosters will be contacting area residents about listing their "special dates" the first two weeks in March.

Heading the drive are Mrs. Charles Hafner and Mrs. Willis Heydlauff who urge all parents of band members to aid the project if called upon.

Captains for the drive were named recently by the boosters. They include Mrs. William Rademacher, Mrs. George Heydlauff, Mrs. Robert Reed, Mrs. John Dettling, Mrs. Errol Jones, Mrs. Stanley Weir, Mrs. James Schardien, Mrs. Jay Hopkins, Mrs. Daniel Reilly, Mrs. Thomas Stepp, Mrs. Richard Jennings, Mrs. G. J. Straub, Mr. and Mrs. Ted Tibb, Mrs. Harold Bailey, Mrs. Robert Ball, Mrs. Leonard Molsinger, Mrs. Duane Landwehr, Mr. Ed Greenleaf, Mrs. Cecil Clouse, Mrs. Keith Schuelke, Mrs. Donald Doll, Mrs. Earl Huehl, Mrs. Donald Pierson, Mr. and Mrs. Lee H. Ferguson and Mrs. Betty Eder.

The boosters will be contacting area residents asking them if they would like to order calendars and/or place a listing. If anyone interested is not contacted, they may call either Mrs. Hafner, 475-8491, or Mrs. Heydlauff, 479-7191.

Any organization not contacted may call Mrs. Helen Harrison, chairman of the Organizations and Churches listings at 475-8879.

Proceeds of the sale will aid the Chelsea Band with travel funds and new uniforms.

NOBEL PRIZE

The Nobel Prizes come from a trust fund set up by Alfred Nobel, Swedish inventor of dynamite. Amounting to approximately \$40,000 each, the prizes are awarded to persons or organizations for outstanding work in physiology or medicine, chemistry, physics, literature and the cause of world peace.

DEXTER TOWNSHIP BOARD OF REVIEW

Notice is hereby given to all persons liable to assessment for taxes in the

TOWNSHIP OF DEXTER

County of Washtenaw, State of Michigan

That the Assessment Roll of said Township as prepared by the undersigned will be reviewed by the Board at

DEXTER TOWNSHIP HALL

Corner Dexter Townhall and Quigley Roads on

TUESDAY, MARCH 3, 1970

from 9 a.m. to 3 p.m.

Appeal and conferences with taxpayers will be heard on

MONDAY and TUESDAY, MARCH 9-10, 1970

from 9 a.m. to 3 p.m. of said day, and upon request of any person who is assessed on said tax roll or of his or her agent and upon sufficient cause being shown, said Board of Review will correct the assessment as to such property in such manner as will in their judgment make the valuation just and equal.

Such assessment tax roll as reviewed and approved by said Board of Review will be the assessment roll of said Township of Dexter for the year 1970.

WARREN EISENBEISER, Supervisor

Dated: Feb. 10, 1970.

NOTICE TO CHELSEA VILLAGE RESIDENTS

The 1970 tree planting program will be carried out during the spring.

Any village resident who wants a tree planted on his or her lawn extension should please contact F. Weber at 475-5911 as soon as possible.

VILLAGE OF CHELSEA

RICHARD HARVEY, CLERK

Motor Vehicle Highway Fund Quarterly Collections Increase

Chelsea village will receive \$10,867 as compared to last year's \$10,650 in Michigan Motor Vehicle Highway Fund collections for the fourth quarter of 1969, which are being distributed to Michigan counties, cities, and villages, the Department of State Highways announced last week.

Henrik E. Stafseth, state highway director, said net receipts in October, November and December were \$3.2 million, up 2.5 percent from the fourth quarter of 1968.

Washtenaw county received a total of \$563,781 for the fourth quarter of 1969 as compared to \$538,526 for the same fourth quarter last year. Other area communities also received increases. Ann Arbor received \$230,368 as compared to last year's \$233,681; Dexter received \$5,909 as compared to \$5,793 last year; Grass Lake increased to \$4,475 as compared to last year's \$4,134; Manchester was allotted \$6,397 this year and \$6,245 last year; Saline received \$7,778 as opposed to last year's \$7,470; and Ypsilanti received \$56,319 against last year's \$57,103.

The highway fund is made up of state gasoline taxes and motor vehicle license plate fees paid by motorists. After deduction of Department of State collection costs and 1.5 percent for the State Waterways commission, 46 percent goes to the Highway Department, 34 percent to the counties and 20 percent to the state's 523 incorporated cities and villages.

Under this formula, the Highway Department received \$40.59 million, the counties \$30 million (including \$854,695 in snow removal payments for the winter of 1968-69) and the cities and villages \$17.64 million.

SENIOR CITIZENS of LIMA TOWNSHIP

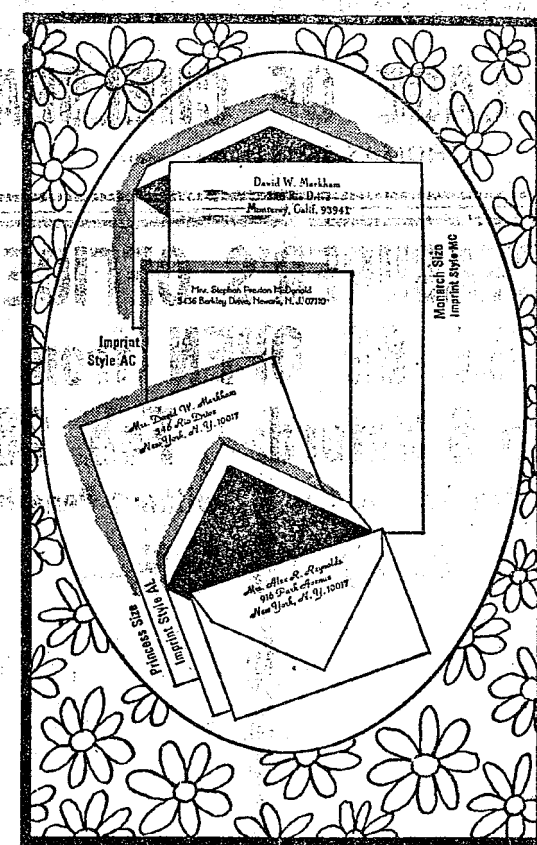
Legislation has been enacted to liberalize requirements for Homestead Tax Exemptions. The limit on income has been increased from \$5,000 to \$6,000 and the property maximum assessment of \$10,000 has been completely removed.

Any senior citizen who feels he may qualify under the new law is urged to contact the supervisor, Kenneth Haist, at his home, 1022 Haist Rd., Phone 475-2729.

LIMA TOWNSHIP

KENNETH HAIST, SUPERVISOR

SAVE \$5.05



Rytex Personalized Stationery Double the Usual Quantity

RYTEX FLIGHT Now \$4.95
(regularly \$10.00)

A medium-weight paper with a discreet laid-mark pattern. Envelopes are lined-in-blue to keep messages confidential. Ideally suited for air-mail. Choice of crisp white or blue paper with printing in bluest-blue ink. Printing style choice as shown. 150 princess sheets and 100 matching envelopes, or 100 monarch sheets and 100 matching envelopes.

VALUE BONUS

An additional 50 matching unprinted sheets for use as second pages (regularly \$1.50) now only \$1.00 with your order.

The Chelsea Standard

MAIL ORDER COUPON

THE CHELSEA STANDARD
CHELSEA, MICHIGAN 48118
RYTEX FLIGHT... boxes at sale price of \$4.95 per box.
SPECIAL BONUS: (check) include 50 matching, unprinted, sheets for only \$1.00 a box more.
CHECK ☐ Princess White (6200) ☐ Princess Blue (6250)
CHOICE: ☐ Monarch White (6400) ☐ Monarch Blue (6450)
BLUE INK ONLY Imprint choice: ☐ AL ☐ MC ☐ AC
Imprint Name _____
Street _____
City _____ State _____ Zip _____
Ordered by: _____
Street _____
City _____ State _____ Zip _____
☐ Charge ☐ Check or M.O. enclosed \$ _____ Sorry, no C.O.D.'s
Please include Sales Tax.

KRAFTY PRODUCTS UPHOLSTERY

425 North Main
GREGORY, MICHIGAN
Phone (313) 498-2800

OPEN HOUSE Saturday, Feb. 28 and Sunday, March 1

from 1 p.m. to 6 p.m.
REFRESHMENTS

Celebrating Our 14th Year

LIMA TOWNSHIP BOARD OF REVIEW

Notice is hereby given to all persons liable to assessment for taxes in the

TOWNSHIP OF LIMA

County of Washtenaw, State of Michigan

That the Assessment Roll of said Township as prepared by the undersigned will be reviewed by the Board at

LIMA COMMUNITY HALL

Jackson Road

Appeals and Conferences with Taxpayers will be heard on

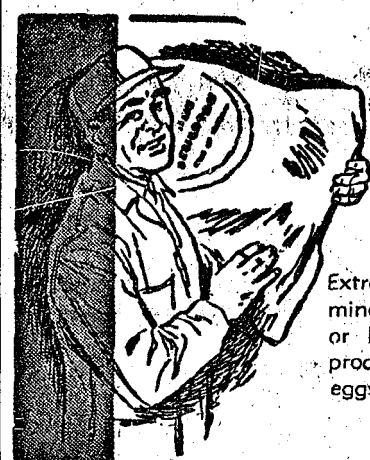
MONDAY and TUESDAY MARCH 9-10, 1970

at which time the Board of Review will be in session from 9 a.m. to 4 p.m. of said days, at which time upon request of any person who is assessed on said tax roll or of his or her agent and upon sufficient cause being shown, said Board of Review will correct the assessment as to such property in such manner as will in their judgment make the valuation relatively just and equal.

Such assessment tax roll as reviewed and approved by said Board of Review will be the assessment roll of said Township of Lima for the year 1970.

KENNETH HAIST, Supervisor

Standard Ads Are a Good Shopping Guide!

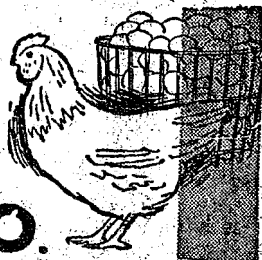


Egg 'em on with Enriched FEEDS

Extra proteins, vitamins and minerals in our Laying Mash or Pellets help your hens produce more eggs, bigger eggs, more profits.

Complete feeding rations for all your livestock, poultry!

FARMERS' SUPPLY CO.
PHONE GR 5-5511



GIRL SCOUT NEWS



TROOP 47—
Girl Scout Troop 47 opened their meeting with a flag ceremony. Two weeks ago we made favors to give to the Methodist Home. One week ago we went to the Home, gave the favors and sang songs. At the Feb. 19 meeting we got our cookie sheet. Mrs. Collinsworth is our cookie chairman. We will order our badges next week.

Next meeting the Personal Health Badge Patrol will give report on what sports are good for your health. We closed with "taps" and the "squeeze."

Kathy Fairbanks, scribe.

JUNIOR TROOP 82—

Wednesday, Feb. 18, we took dues and attendance.

Pat Gilbreath talked about monstrosities. Jane Haselchardt talked about Volunteer Services; she talked about candy-stripers. They are young girls that are 14 or older who are interested in helping sick people.

Mrs. Shepard brought girl scout cookie order blanks. Girl Scout selling days will be from Feb. 20 to March 7.

Barbara Roy, scribe.

BROWNIE TROOP 16—

Brownie Troop No. 16 met Feb. 23 at the Congregational church with 16 members present. We paid our dues and then had the flag ceremony. We formed our Brownie ring and discussed "Thinking Day." Several things were passed around to show about Canada which we moved for Thinking Day. While our leader, Mrs. Patrick, and helper, Mrs. Heller, prepared the table we played "Pass the Broom." We then had tea served from a silver tea service and Bon Bon cakes made by Mrs. Heller. This is a treat enjoyed in England which is the ruler of Canada.

Robin Jones, scribe.

TROOP 58—

We met at the Congregational church Monday, Feb. 23. We opened with "America." Father-daughter night is March 12 at the Junior High cafeteria from 7 to 8:30 p.m. We made invitations and name tags for our Father-daughter night. We sang our grace and had a treat of cake. We played the game Rhythm. Some more of the girls read their reports on their churches. We closed with Indian taps.

Debbie Packard, scribe.

BROWNIE TROOP 145—

Brownie troop 145 opened our Thursday, Feb. 19 meeting with the flag ceremony and sang "When we make a promise."

We voted to go to the circus in April.

We held elections and elected Cathy Myers, treasurer; Linda McGuire, assistant treasurer; Karen Elkins, scribe; and Sheryl Kiel, assistant scribe.

The flag committee will be: Lori Miles, Sally Miller, Marylyn Seitz, Nancy Tyson and Marsha Liebeck.

Linda McGuire passed treats. We talked about Germany and Portugal with items from the World Friendship Chest. We made name tags for our Father-daughter night.

We closed our meeting singing taps and passing the squeeze.

Lori Miles, scribe.

NOT SO WINDY

Although Chicago is called the "Windy City," it ranks behind New York City and Boston in its average wind velocity.



AUTOMOBILE CLUB OF MICHIGAN
Membership and Insurance

JACK SCHLAFF
Ann Arbor 769-5000 Dexter 426-8593



RETIRING after 31 years of service with Federal Screw Works is Mrs. Elnora Wenk, who was presented with a Bible by UAW Local 437. Mrs. Wenk is shown with her foreman, Jerry Dorner (left) of the inspection department, and Ott Risner, committeeman for Local 437. Mrs. Wenk intends to travel following her retirement effective March 1. Her initial plans include visits to California and Florida.

Public Hearing Set Wednesday On County Medical Complex

A public hearing regarding Washtenaw county's possible involvement with St. Joseph Mercy Hospital in a new medical complex will be held Wednesday, March 4, in the County Board of Supervisors room in Ann Arbor at 7:30 p.m.

The hearing was scheduled by the Washtenaw County Metropolitan Planning Commission at the request of the County Board of Supervisors.

The proposed new medical complex is to be located on a part of the 130-acre County Farm property located on Washtenaw Ave., at Platt Rd., in the city of Ann Arbor. The proposal is for St. Joseph to use some 50 acres of the farm for a new acute care hospital with the county developing a human resources complex, including a new medical care facility (new county hospital) in the immediate vicinity of the acute hospital.

"The hearing is intended to give those citizens and groups, who desire, an opportunity to express their opinions about the proposal," explained Thomas J. Fegan, director of the Commission, in a letter released Tuesday, Feb. 24. He continued, "An informative presentation on the proposal will be given prior to the public discussion at this meeting."

The Commission's proposal comes after several years of intensive study including that done by the Medical Care Study Committee, which was established by a directive from Bent Nielsen, chairman of the board of supervisors, in the fall of 1967.

In September of 1969, Nielsen requested the Commission to analyze and make recommendations concerning the possible location and utilization of the County Farm property for a new acute care hospital complex, county medical care facility and other county facilities.

In formulating its recommendations, the Commission made extensive use of various past reports, including that of the 1967 Medical Care Study Committee. The 1967 recommendations include a recognition of the need for county government to promote and insure adequate post acute and extended care facilities; the inadequacy of the present county medical care facility; and the advisability of locating any new facility or facilities within, or attaching them to, a non-profit acute care hospital or hospitals.

The 1967 report mentions the

three acute care hospitals in the county (Beyer Memorial, University, and St. Joseph Mercy hospitals) as acceptable institutions.

The Commission came to four major conclusions during its recent study. It concluded that:

- 1) The County Farm property is an acceptable site for St. Joseph Mercy Hospital to relocate;
- 2) the subdividing of the County Farm property into delineated areas for St. Joseph Mercy Hospital development, as well as future county development, should be investigated in greater detail before site development determinations are made;
- 3) there should continue to be co-ordination between acute care hospitals within the county and county health responsibilities; and
- 4) St. Joseph Mercy Hospital has indicated a continual commitment to be a county-oriented acute care hospital. The county Board of Supervisors must endeavor to see that such a program will continue and the needs of any and all patients regardless of race, religion, ethnic group will be equally served.

Based upon these conclusions, the Commission, in its report, stated the following two recommendations:

- 1) The Board of Supervisors should formally approach St. Joseph Mercy Hospital to determine the extent of their interest in the County Farm property as a possible location for their proposed new hospital complex;
- 2) If response is positive, the Board of Supervisors should develop a program of action which would: define the goals, objectives, course of action, and organizational structure necessary to carry out a program of mutual development of the property; instruct the county planning commission to create an advisory committee; proceed to work out details as well as yet-to-be resolved policies and conditions; define what part of the County Farm property is best suited for an acute care hospital and what part is best suited for county functions; continue to inform and co-ordinate this program with Ann Arbor officials as the project proceeds; define what are the short and long range health programs that can and should be continued, expanded and/or developed to take advantage of the physical proximity between possible county and St. Joseph facilities; and actively seek the opinions of all interested segments of the county concerning this proposal.

Livestock Tour Slated March 5

A Livestock Tour to be held Thursday, March 5 has been announced by county agricultural agent, Bill Ames.

The tour will begin at 10 a.m. with Stop 1 at the cow-calf facilities of the Calderone-Curran Ranches at 4749 Willis Rd., Grass Lake. The tour will proceed to the feedlot of Lyle Cunningham on Little Rd. in Concord at 1:30 p.m. Those interested in attending may meet at the ranch on Willis Rd. in the morning.

For further information, contact Bill Ames at 663-7511, ext. 227.

Telephone Your Club News
To GR 5-3581.

ments of the county concerning this proposal.

Response from the Ann Arbor City Planning Commission was favorable to the proposed relocation of St. Joseph Mercy Hospital, as evidenced by its adoption of a staff report from Michael R. Brochaska, Ann Arbor Planning Director, who "totally endorsed the recommendation to utilize the Washtenaw County Farm site for a medical center complex, to include St. Joseph Mercy Hospital."

The County Board of Supervisors' Room, the location of the upcoming public hearing, is on the second floor of the County Building in Ann Arbor.

INCOME TAX SERVICE

Call for Appointment
426-4888

Alexander Zangara

2081 Baker Road
Dexter, Mich.

DELICIOUS MONTHLY
SMORGASBORD
SATURDAY, FEB. 28 - 5 to 7 p.m.
Adults, \$2.25 - Children, 75c
UNITED METHODIST CHURCH
NAPOLEON, MICH.

SENIOR CITIZENS

Homestead Tax Exemption coverage has been expanded for Senior Citizens. New regulations now effective have increased the income limitation from \$5,000 to \$6,000 and completely removed the property value limitation.

Applicants need Social Security card, deed to their property, birth certificate or proof of age and a copy of their 1969 tax statement.

Sylvan Township Supervisor Maurice Hoffman will be at Sylvan Town Hall Saturday, Feb. 28 from 9 a.m. to 3 p.m. to assist any citizen who feels he may now be qualified.

SYLVAN TOWNSHIP
MAURICE HOFFMAN, Supervisor

SYLVAN TOWNSHIP BOARD OF REVIEW

Notice is hereby given to all persons liable to assessment for taxes in the

TOWNSHIP OF SYLVAN

County of Washtenaw, State of Michigan

That the Assessment Roll of said Township as prepared by the undersigned will be reviewed by the Board at

SYLVAN TOWNSHIP HALL

West Middle Street, Chelsea, Michigan, on

Tuesday and Wednesday, March 3-4, 1970
from 9 a.m. to 12 Noon and 1 p.m. to 4 p.m.

Appeals and Conferences with Taxpayers
will be heard on

Monday and Tuesday, March 9-10, 1970

at which time the Board of Review will be in session from 9 a.m. to 12 Noon and from 1 p.m. to 4 p.m. of said days. Upon request of any person who is assessed on said tax roll or of his or her agent and upon sufficient cause being shown, said Board of Review will correct the assessment as to such property in such manner as will in their judgment make the valuation relatively just and equal.

Such assessment tax roll as reviewed and approved by said Board of Review will be the assessment roll of said Township of Sylvan for the year 1970.

MAURICE HOFFMAN, Supervisor

Dated: Feb. 16, 1970.

TREASURER'S OFFICE WILL BE OPEN from 9 to 6 Saturday, Feb. 28

Last Day To Pay Locally without Penalty

—NOTICE—

Sylvan Township Taxpayers

Sylvan Township Treasurer will be at 103 N. Main St., Chelsea, to collect Sylvan Township Taxes Monday through Friday, 8 a.m. to 5 p.m., until Feb. 28, 1970.

CHECKS WILL BE ACCEPTED BY MAIL

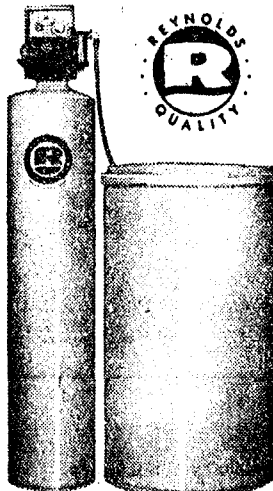
All Dog Licenses must be paid to Sylvan Township Treasurer on or before March 1, 1970, to avoid penalty.

MALE AND UNSEXED, \$3.00 - FEMALE, \$5.00

Rabies Vaccination papers must be presented in order to obtain license.

FRED W. PEARSALL
SYLVAN TOWNSHIP TREASURER

NOW YOU CAN RENT SOFT WATER The Carefree Way!



Now, for the first time, you can rent a famous, multi-purpose Heavy-duty REYNOLDS Fully-Automatic Water Conditioner that removes iron-rust the "CAREFREE" way.

New low rental rates:
Standard size only \$6.00 per mo.
Large size only \$8.00 per mo.
Rentals applied toward purchase, when desired
Investigate the very best in water conditioning... no obligation.

Serving Washtenaw County since 1931
REYNOLDS WATER CONDITIONING CO.
12100 Cloverdale Detroit, Michigan 48204
Michigan's oldest water conditioning company

Call our direct factory line without charge 1-800-552-7717

or call Ann Arbor 662-5674

R **“FAITH” IS AN
EXTRA INGREDIENT**

As we fill each prescription, we know that in addition to the ingredients that your physician specifies, there is an extra intangible ingredient that does not appear in writing. It is 'Faith' that through his knowledge and experience he has prescribed a medicine that will help to cure or relieve an illness.

Sometimes, this 'Faith' can be as important as the medicine itself. We too have a great deal of faith in the accuracy of the prescriptions we dispense and we derive much satisfaction when you tell us on a future visit that someone in your family is now well.

YOU OR YOUR DOCTOR CAN PHONE US when you need a delivery. We will deliver promptly without extra charge. A great many people rely on us for their health needs. We welcome requests for delivery service and charge accounts.

CHELSEA DRUG
24-HOUR PRESCRIPTION SERVICE
4 Registered Pharmacists
101 N. MAIN ST. PHONE GR 5-4611

daily interest +

6%

PASSBOOK
CERTIFICATE
ACCOUNTS
Two Year Maturity
in Amounts of
\$5,000 or More

5.0% PASSBOOK SAVINGS ACCOUNT
Deposit any amount, any time. Daily interest paid and compounded quarterly.

5 1/4% PASSBOOK CERTIFICATE ACCOUNTS
Six Months Maturity in Amounts of \$1,000 or More

5 3/4% PASSBOOK CERTIFICATE ACCOUNTS
One Year Maturity in Amounts of \$5,000 or More

All accounts insured to \$20,000 with F.S.L.I.C.

AAFE
the savings specialists

Liberty at Division, West Stadium at Pauline,
Huron Parkway at Platt, Plymouth at Nixon.

ANN ARBOR FEDERAL SAVINGS

Member: Federal Home Loan Bank System • Federal Savings and Loan Insurance Corporation



IT'S ALL IN ONE DISH! Women of the Southeastern Michigan service area of the Detroit Edison Co. are reminded of the Queen of the Kitchen contest open to all working women in this area. The recipe submitted must be for a one-dish meal which can be cooked in an hour or less. Pictured here with one of the publicity posters are Marion E. Ryan (left), head of Edison's Electric living

Faculty Wives Hear Talk on Tour of Alaska

Faculty Wives met Monday night, Feb. 23 at the home of Mrs. George Prinzing where Sharon Heydauff, from the Speech Bureau at the high school, presented a speech and slides of "Alaska, the Last Frontier."

She told about her family and friends traveling and camping for nine weeks last summer in the "Land of the Midnight Sun." Among the points of interest were the Alaskan Highway, the great Yukon River, the clean air and water, Mt. McKinley, their plane rides over the Arctic Circle, Juneau, the glaciers and climate (85 degrees in July), Ketchikan, the innocent and beautiful wildlife, Dawson, the gold miners past and present, the fishing, the forests, and some of the social conditions.

They traveled in a pick-up camper, by plane, train and ferry.

Members were enthused about the presentation and encourage others to hear it and take advantage of other such presentations offered through the newly-created "GHS" Speech Bureau, according to Mrs. Prinzing.

The Speech Bureau may be contacted by calling William Coelius at the high school.

Subscribe today to The Standard!

Home Economics Study Groups Calendar

Week of Feb. 25-March 4

Thursday, Feb. 26—Rogers Corners, Mrs. Norman Wenk, 2681 S. Fletcher Rd., Chelsea.

Thursday, Feb. 26—Free Lo's, Mrs. Louis Vogel, 11437 Pleasant Lake Rd., Manchester.

Tuesday, March 3—Mrs. Paul Blasey, 1818 Kingwood, Ann Arbor.

Carolyn Wilkerson Chosen by Nursing Honors Sorority

Carolyn Wilkerson, the daughter of Norma Wilkerson of Spring Lake and Kenneth Wilkerson of 611 N. Main St., has been selected to become a member of the Rho Chapter of Sigma Theta Tau, a national honor society in nursing.

Selection to the honor society is based on academic achievement and professional leadership.

Miss Wilkerson is currently a senior in the school of nursing at the University of Michigan, and will graduate in August of this year.

Telephone Your Club News
To GR 5-3581.

Marion Kline Circle Meets Wednesday At Methodist Home

Valentine favors and napkins at each of 40 place settings greeted members of the Marion Kline Circle of the United Methodist church and their guests from the Methodist Home, who met at the Methodist Home Wednesday, Feb. 18 for a pot-luck luncheon.

Mrs. Winifred Jordan was responsible for the festive decorations of red and white, and for the centerpiece of white branches, birds and cut-out hearts.

Mrs. Lloyd Merrell acted as hostess for the group and was assisted by several other Home circle members. Each circle member had a home lady as a guest.

Mrs. Ben Donaldson, chairman, called the meeting to order and introduced Mrs. George Stanford who gave the devotion. She read from St. Matthew Chapter 25, verses 31-40.

Correspondence from Mrs. James Hoffmeyer, revealed that seven boxes, containing towels and wash cloths, were wrapped and given at Christmas time as gifts from the Marion Kline circle.

The circle was pleased to accept the invitation of the Vivian Otto circle to meet with them on April 15 in the social center of the church.

Presenting a program entitled "Understanding China and the Chinese People," was Mrs. Robert Harris, who told of the Chinese philosophy and of China's contribution to history, dating back more than 2,000 years before the coming of Christ. She also told of the many things that have taken place in China during the 20th century. China is, it told, a world power today, and it is hoped that U. S. relations with this power will improve in this century.

Mrs. Winifred Coffron will be hostess for the Wednesday, March 18 meeting. It will be held in the Educational Unit of the church at 1 p.m.

PLASTIC RAINCOATS
For extra storage, put bags with pockets similar to shoe bags on coat closet doors. Use the pockets for storing gloves, scarves, caps or similar items.

Letters to the Editor

To the Editor,

As a student of CHS, I would like to express my opinion, even though I may not be agreed with. Although Mr. Brauningger was right in his letter telling about the legal aspects of the dress code, I do not think that this is the most important step in abolishing it. I think that it is more important that the power of the community realize why the dress code should be abolished. The people have to feel in their own minds that the dress code is unfair and not right. Until then, changing the rules will be close to impossible.

One of the arguments for keeping the dress code is to insure our school against boys with shoulder-length hair. Some people think if kids have long hair, they'll start taking drugs and stop taking baths. If they would stop and think, they would realize this: the kids in Chelsea High school will be the same whether they have long hair or short hair. Just because a person grows his hair longer doesn't mean that his personality will be changed.

We aren't asking these people if long hair looks good. We're asking them if it is right for the school board and the administration to suspend kids with long hair. We aren't asking these people to grow their hair long. If these people personally do not like long hair, it is right for them to deny the students freedom of expression, when this freedom hurts nothing except maybe the school board's pride? The courts say no and I say no.

I think the people of this community should not quit, but should continue to take action until these rules are abolished. This has worked in Dexter and other cities, and it can work here too.

Sincerely,
Joe O'Neill.

To the Editor:

During a recent class discussion, the subject was brought up about last week-end's Ski Club trip to Nub's Nob, up north. During the trip, the kids poked holes in the ceiling and towels were flushed down the toilets. This, in my opinion, is degrading to the rest of the Chelsea High student body. It's also a pretty expensive "fun" week-end for the Ski Club, as they'll have to pay for it.

Parents should wonder what their kids are doing on their ski week-ends. Perhaps if they thought about it, they wouldn't have to pay for irresponsible "fun" like that when they pay for their kid's Ski Club trips.

Sincerely,
Another CHS Student.

To the Editor:

My family recently moved to Chelsea from New Orleans. I have found the village to be friendly.

But this is not the purpose of my letter. I am writing to you about something that affects many of the students at Chelsea High. I am referring to the unpaved student parking lot.

Whenever the snow starts to melt, the parking lot has large muddy puddles in it. If one is lucky, one can find small dry places to step on so one's feet do not become muddy. If one is not lucky, too bad.

I think the student parking lot should be paved, or at least black-topped. I was told that there have been many discussions about this for the past five years. Don't you think it's time something is done?

Sincerely,
Christine Rasmussen

Don't be needed by drugs.

To the Editor:

When I read about the school dress code in a recent issue of The Chelsea Standard, I thought, "Hurrah, for Chelsea High School!" It is both reassuring and refreshing to know that there are so many young people who do care about propriety and good grooming. Now, I have just finished reading the letter by Walter Brauningger. I have never before heard of Walter Brauningger.

Unless I'm misinformed, the voting public elected a school board to take care of all business concerning the schools.

I suggest that you, Walter Brauningger, leave these nice young people alone, and "go bark up" some other "cause."

My own civil liberties get trampled on too, as follows:

1. When I'm in a crowded place or elevator, and must breathe in the stench of un-shampooed mop heads, un-washed clothing and bodies.

2. When my taxes are raised to help pay for repairing the senseless destruction to public buildings and parks by marauding groups led by rabble rousers.

3. When my tax dollars "are at work" cleaning up the filth and litter left by some protesting mob, whose members employ the manners of animals, sanitation-wise, and otherwise.

I'm for Law too, AND ORDER.

Sincerely,
Mrs. Lynn Eisenbeiser
(former Chelsea area resident)

To the Editor:

I am writing to you for the concern of all Chelsea High school students. People in our school complain about the situation of our town, in that there are not enough places for our youth to go at night.

I also realize that I am not going to be able to do anything about this problem but I think the people of Chelsea should do something for the teen-age generation. If they can build parks and other things for little children, they can do something for the teen-agers.

Sincerely yours,
Bob Radd.

To the Editor:

I believe that Walter Brauningger is wrong. I don't think that the rights of students are being subverted at Chelsea High school.

The student council at Chelsea High circulated a survey, polling the opinions of the students, and the parents. At an assembly attended by the entire student body, the student council presented the results of this survey. It showed that a majority of students and parents did not want the students of Chelsea High to be able to grow their hair at any length the students wanted.

How can Walter Brauningger claim that the students do not have all their rights? A majority of the students believe that the student council is right. Would Mr. Brauningger have a minority rule at CHS? This too is against the principles of American democracy!

Sincerely,
Chick Lane.

To the Editor:

When painting, it's wise to protect your furniture—Newspapers, plastic dropcloths and tarpaulins make good protectors for floors and furniture. Protect yourself, too. Wear old clothes.

PAINT PROTECTION

When painting, it's wise to protect your furniture—Newspapers, plastic dropcloths and tarpaulins make good protectors for floors and furniture. Protect yourself, too. Wear old clothes.

REAL CONTEST

At one time in ancient Greek games at Olympia, the featured event was a brutal boxing-wrestling match called the pankration, meaning "all-strength," which was fought until surrender or death.

Club and Social Activities

MODERN MOTHERS

Modern Mothers Child Study Club met at the home of Mrs. Richard Stoll last Tuesday evening, Feb. 24 for an evening of bingo. Mrs. Vera Otto was the co-hostess.

The game was held after the business meeting.

The next meeting of the group will be March 10, at the home of Mrs. Philip Hume. The program will be on "Traffic Safety."

CHILD STUDY CLUB

Chelsea Child Study Club met at the home of Mrs. Larry Chapman on Tuesday evening, Feb. 24.

The women were entertained and informed by Dr. Jerry Waldyke, who presented a series of slides of an Indian reservation in Nevada, where he and his wife worked and lived for two years prior to coming to Chelsea.

The second part of the program, which was an historical sketch of the Michigan Indian and his progress with tools and weapons, was given to the club by Larry Chapman who has been devoted to his hobby of Indian history for several years.

A guest for the evening was Mrs. Merle Barr.

The next meeting will be at the home of Mrs. Robert Robbins on March 10. The program will be a panel discussion, "Mother Reacts to the Family."

WOMAN'S CLUB

Since the weatherman has been teasing the area with what "appears" to be spring weather, many have gotten that old spring fever.

Since spring is the time to think about house-cleaning, or for the more ambitious, house re-arranging, the Woman's Club of Chelsea held its Tuesday night, Feb. 24 meeting at Merkel Bros. Furniture and Carpet store.

Approximately 25 women were present to direct questions on home furnishings and decorating to a panel consisting of Robert Merkel, Leola Brennan, and Miss Sue Ellerholz.

Refreshments were served to the group by Mrs. Ray Peppers and Mrs. Sylvester Wojcik.

MARION SIMONS CIRCLE

Marion Simons Circle of the First United Methodist church met Feb. 18 at the home of Mrs. Harold Dresch with Mrs. George Palmer as co-hostess. Nine members and two guests were present.

A short business meeting was held. The new name for Circle was chosen to be "Sarah."

Cards were sent to several shut-ins.

The circle will be hostess on March 4 to the WSCS breakfast.

Devotions were given by Mrs. Edward Lewis and the meeting was closed with the prayer chain.

Next meeting will be with Mrs. Russell Bernath, March 18.

VIVIAN OTTO CIRCLE

Vivian Otto Circle will, in the future, be known as the Ruth Circle of the Methodist church, in line with the plan to name circles after women in the Bible. The circle met at the church Wednesday, Feb. 18, at 12:30 p.m. for a pot-luck luncheon and program.

Hostesses were Mrs. Calvin Summers, circle chairman, and Mrs. Donald Leggett.

Mrs. Summers opened the meet-

PAT'S CORNER

By PAT DITTMAR
Home Economist
Chelsea Milling Co.

"JIFFY" Corn Muffin Mix is one of our most popular prepared mixes. During cold weather months most of us like to serve hot corn muffins at mealtime. But have you stopped to think of all the different ways this mix can be served? In today's column I'm listing a couple of interesting variations which I hope you will try.

DILLY CORN BREAD (6 servings)

1. Prepare "JIFFY" Corn Muffin Mix as directed on package except stir in 1 teaspoon dill seed and ½ teaspoon poppy seed.
2. Pour into greased pan, 8x8x2 inches.
3. Bake about 25 minutes.

'CORN' BREAD

1. Prepare "JIFFY" Corn Muffin Mix as directed on package except stir in 1 cup whole kernel corn, 1 tablespoon chopped pimiento and 1 tablespoon chopped hot green peppers.
2. Pour into greased square pan, 8x8x2 inches.
3. Bake about 25 minutes.

ing with a Bible reading and prayer and then Mrs. Stanley Bond introduced Mrs. Melinda Warner, a volunteer worker with the Spaulding for Children adoption agency who spoke on the topic, "How To Adopt Children from Spaulding." She said she and her husband now have two boys they adopted through the Spaulding agency.

Announcement was made of the Woman's Society for Christian Service (WSCS) meeting—a breakfast at 9 a.m. March 4 in the church social center.

At the Feb. 17 meeting of Grace Otto Circle at the home of Mrs. Albert Peterson, announcement was made that the name of the circle is to be changed, the change to be made at the next general meeting of the Woman's Society of Christian Service (WSCS). The circle has a choice of two names of women in the Bible for whom their group will be named. The group, however, will continue to remember the missionary worker, Grace Otto, on special occasions and members were also advised to read the article written by Grace Otto and published in the latest issue of the "Upper Room."

Mrs. George Atkinson opened the Feb. 17 meeting by reading an article entitled "The Faith of Helen Keller."

Business at the meeting included a call for assistance in making

At the Feb. 17 meeting of Grace Otto Circle at the home of Mrs. Albert Peterson, announcement was made that the name of the circle is to be changed, the change to be made at the next general meeting of the Woman's Society of Christian Service (WSCS). The circle has a choice of two names of women in the Bible for whom their group will be named. The group, however, will continue to remember the missionary worker, Grace Otto, on special occasions and members were also advised to read the article written by Grace Otto and published in the latest issue of the "Upper Room."

Mrs. George Atkinson opened the Feb. 17 meeting by reading an article entitled "The Faith of Helen Keller."

Business at the meeting included a call for assistance in making

At the Feb. 17 meeting of Grace Otto Circle at the home of Mrs. Albert Peterson, announcement was made that the name of the circle is to be changed, the change to be made at the next general meeting of the Woman's Society of Christian Service (WSCS). The circle has a choice of two names of women in the Bible for whom their group will be named. The group, however, will continue to remember the missionary worker, Grace Otto, on special occasions and members were also advised to read the article written by Grace Otto and published in the latest issue of the "Upper Room."

Mrs. George Atkinson opened the Feb. 17 meeting by reading an article entitled "The Faith of Helen Keller."

Business at the meeting included a call for assistance in making

At the Feb. 17 meeting of Grace Otto Circle at the home of Mrs. Albert Peterson, announcement was made that the name of the circle is to be changed, the change to be made at the next general meeting of the Woman's Society of Christian Service (WSCS). The circle has a choice of two names of women in the Bible for whom their group will be named. The group, however, will continue to remember the missionary worker, Grace Otto, on special occasions and members were also advised to read the article written by Grace Otto and published in the latest issue of the "Upper Room."

Mrs. George Atkinson opened the Feb. 17 meeting by reading an article entitled "The Faith of Helen Keller."

Business at the meeting included a call for assistance in making

Save Up to 60% Now!

Over 5,000 yards of fabrics
\$1.88 per yard and up

PHONE 662-4706

RENDEL'S UPHOLSTERING

732 Lakeview Ave., off Liberty at Killins Concrete, Ann Arbor

MASON SHOES

For 1970 Mason Shoes are bringing you 44 new, beautiful styles for women and 24 styles for men.

ALSO, FOR FEBRUARY

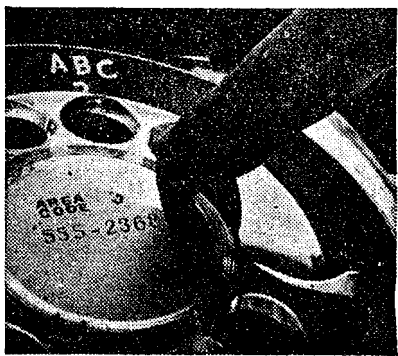
24 STYLES WITH \$1.00 DISCOUNT COUPONS

Plus 28 styles at a savings of \$1.99 to \$4.99.

Your Local Mason Shoe Dealer

EDDIE (STAN) STANLEY

PHONE 475-7576



all you need
to get out of town
in a hurry

Dial your long distance calls direct and get somewhere the easy way. Just dial 1, the area code (if different from your own), then the phone number, and you'll go a long way. Fast. Dial your long distance calls direct. And get out of town, on time.



SHARON TOWNSHIP BOARD OF REVIEW

Notice is hereby given to all persons liable to assessment for taxes in the

TOWNSHIP OF SHARON

County of Washtenaw, State of Michigan

That the Assessment Roll of said Township as prepared by the undersigned will be reviewed by the Board at

SHARON TOWNSHIP HALL

on
TUESDAY, MARCH 3, 1970
from 9 a.m. to 3 p.m.

Appeals and Conferences with Taxpayers
will be heard on

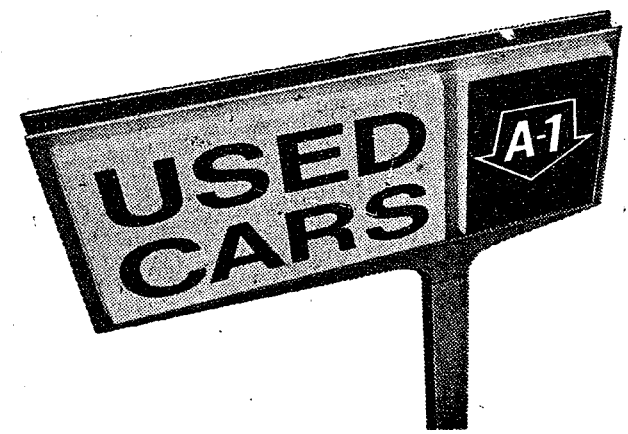
TUESDAY, MARCH 10, 1970

at which time the Board of Review will be in session from 9 a.m. to 3 p.m. of said day, at which time upon request of any person who is assessed on said tax roll or of his or her agent and upon sufficient cause being shown, said Board of Review will correct the assessment as to such property in such manner as will in their judgment make the valuation relatively just and equal.

Such assessment tax roll as reviewed and approved by said Board of Review will be the assessment roll of said Township of Sharon for the year 1970.

RUSSELL FULLER, Supervisor

Dated: Feb. 17, 1970.



No.1 in service!
No.1 in savings!

We won't risk our good reputation by selling you a bad used car!

FINANCING
Ample financing available
at your local Ford
Dealer's for qualified buyers!

It's good business to sell you a good used car. That way, we aim to sell you a good new car some day!

Your Ford Dealer's the 1 to see.



PALMER MOTOR SALES, INC.

CHELSEA, MICHIGAN



JUNE WEDDING: Announcement has been made by Mr. and Mrs. Robert Lewandowski, 15705 Gorton Rd., of the engagement of their daughter, Barbara J., to Edward Bruce Weycker, son of Mr. and Mrs. B. Weycker of Utica. The bride-to-be is a graduate of Belleville High school and is currently attending Central Michigan University. Her fiancé is a graduate of Utica High school and attended Highland Park Community College where he was a member of the Society of Arts and Crafts. He is now employed by the Color-Graphic Studio in Warren. The couple plans a June 12 wedding.

GOLFING CENTER

Opening of the tenth golf course in and near Naples, Florida makes the city one of the "golfingest" in the country.



ENGAGED: Mr. and Mrs. Herman Ashley of Gregory announce the engagement of their daughter, Maryellen, to Gary L. Dachtler, son of Mr. and Mrs. Harold Dachtler of Lansing. Miss Ashley is a 1967 graduate of Chelsea High school and is attending Ferris State College in Big Rapids. Her fiancé was graduated from Everett High school in Lansing and is also attending college in Big Rapids. An Aug. 22 wedding is planned.

If you're hiring a professional painting contractor, there are some things you should do before he starts work. Move furniture into the center of the room. Dust walls and wash greasy or dirty areas with detergent and water. Move all clothes out of closets, books out of bookcases, and take down draperies and blinds. By preparing in advance, you'll save unnecessary labor costs.

CHARM BEAUTY SALON

4396 CLEAR LAKE ROAD
(Formerly of Grass Lake)

Two Operators - Hair Styling and Wig Service
Open on Mondays - Closed Tuesdays

PHONE 475-2700



Just one darn minute

ACCUTRON. CALIBER "V". Waterproof. Sweep second hand, gift or silver dial, luminous dots and hands. Alligator strap. \$179.00

That's the most accurate timepiece will gain or lose in one month. And we'll guarantee it. Accutron looks like a watch. But it isn't. It doesn't have a main spring, a hairspring, or a balance wheel. Accutron has replaced them with an electronic-powered tuning fork. It splits each second into 360 equal parts. And makes the Accutron timepiece so precise, it won't gain or lose an average of more than two seconds a day.

ACCUTRON® by BULOVA. It goes tim-m-m-m.

Winans Jewelry Store

*When case, crown and crystal are intact.
We will adjust timekeeping to this tolerance. If necessary, guarantee is for one full year.

Wesleyan Service Guild To Entertain Ann Arbor Group

Tuesday evening, Feb. 17, Wesleyan Service Guild of the Methodist church held a regular meeting at the home of Mrs. Joey Clark with 18 members and one guest present. The guest, Mrs. William Storey, later became a member of the group.

Refreshments were served at the guests arrived at 7:30 p.m. and this was followed by a business session in charge of Mrs. Gary Packard. She announced that the Wesleyan Service Guild of the Ann Arbor First United Methodist church has been invited to meet with the Chelsea group at the April meeting. It was also decided to donate money to the Methodist Youth Fellowships of the church for their needs.

Mrs. Packard also announced that April 5 is the date for the annual Wesleyan Service Guild meeting and that it is to take place at the Ypsilanti Methodist church. The Chelsea group is to have charge of the worship program at the annual meeting. Announced also, was the fall week-end, Oct. 10 and 11, at the Walden Woods conference center near Hartland.

For the program, Mrs. LeRoy Hoffman and Mrs. Dwight Gadbey had several interesting readings taken from the book "Nation Under God." These included excerpts from McGuffey Readers; "Touching Elbows and Hearts" by Woodrow Wilson; letters from his daughter, Betty, to Thomas Jefferson; and an article about the Statue of Liberty.

Mrs. Hoffman closed the program by reading "Time To Reflect."

The next regular Wesleyan Guild meeting will be held Tuesday evening, March 17, at the home of Mrs. William Storey.

Older Adult Group Entertained Feb. 21 By Action Group

The Rev. George Neyens opened the Feb. 21 meeting of the Older Adult Group of the Methodist church with prayer. This was followed by a dinner and program provided by the Action Group of the church as a courtesy to the senior group. It is an annual project of the Action Group and the Older Adult Group, responded with thanks and appreciation to them and to the members of the Methodist Youth Fellowship who assisted with serving.

Table decorations included fresh carnations and assorted flowers.

Mr. and Mrs. Blaine Lyle presented the program, narrating pictures taken by Mrs. Lyle's mother, Mrs. Beulah Newman on a trip to the Holy Land.

Mrs. Herbert Paul, director of the group, was absent, having gone to Freelandville, Ind., to help celebrate the 99th birthday of her father, William Yocum.

The next meeting of the Older Adult Group is scheduled for March 21 and Mrs. Al Hoelzer will provide a birthday cake in honor of February and March birthdays of members.

With Mrs. Hoelzer at the piano, the meeting closed with group singing of "Blest Be the Tie That Binds Our Hearts in Christian Love."

Subscribe today to The Standard!



TOUCHING UP THEIR FASHIONS to be displayed for their families at the Gingham Belles Family Fashion Show to be held Monday, March 2 at the Beach Junior High school are the 4-H group's teen leaders, and the three adult co-leaders. From left standing are Mrs. William Clark, Nancy Mshar, and Grace Penhallegon. Seated from left

Gingham Belles 4-H Group Preparing for Fashion Show

Belles are ringing for the families of the Gingham Belles, beckoning them to the 4-H group's Family Fashion Show to be held Monday night, March 2 at 7:30 p.m. at the Beach Junior High school.

Invitations in the form of a pirate's treasure map to a treasure hunt for fashion have been sent to the families of the girls, and last-minute preparations are being made for the show, which will display the Fall-long "treasured projects" of the members.

Each of the girls in the clothing and knitting divisions has chosen designs for the pirate-themed, review-to-interest the entire family, according to the co-leaders of the group, Mrs. William Clark, Nancy Mshar, Mrs. J. Schardein, and Grace Penhallegon.

"As the guests arrive at the junior high, they will be given name tags in the shape of palm trees and ushered to their seats in front of a stage, which will sport a large treasure chest filled with flowers. Girls will then display their sewing treasures for the group."

Ten leaders of the group got together recently to place last-minute touches on their projects. Barbara Boylan, the daughter of Mr. and Mrs. Keith Boylan, 245 Park St., has been a member of 4-H for five years. She has chosen for the show a long sleeved, A-line dress of aqua voile with a white circle design in the material. Her dress has a white collar and cuffs, and white buttons down the front. She has chosen a light blue lining material.

Cathy Clark, the daughter of Mr. and Mrs. William Clark, 26 Sycamore Dr., and also a teen leader, has been a 4-H clothing member for two years and a one-year member of the knitting division. She has chosen to display a sheath dress in pink linen, featuring an invisible front zipper and long, set-in sleeves ending in cuffs. The collar is a stand-up mandarin type, ending in long ties with self ruffles in the front. Cathy has also knit a peek-a-boo

vest in avocado green with a v-neck and ties in the front to show the treasure seekers.

Donna Clark, also the daughter of the William Clarks, is a teen leader with three years of experience with the clothing division and two years with the knitting division of the 4-H club. She has chosen to display a red corduroy double-breasted front wrap jumper, completely lined in red taffeta. The blouse is a pink whip cream materialized project, with a back zipper, rolled collar with detachable tie, and a long set-in of sleeves, gathered at the wrists.

Donna's knitting project is a Navajo Indian printed, A-line skirt of hot pink with navy, lime green and white in the pattern. Barbara Duerr, the daughter of Mrs. Lina Duerr, 204 N. East St., has two years of clothing division experience and one year of knitting with the division, and is also a teen leader of the group. She will show the treasure hunters a navy bonded wool scooped neck jumper with back zipper. The jumper blouse of red, white and blue, is sheer with a collar and long sleeves gathered to button-down cuffs. Barbara is knitting the same vest that Cathy is knitting, but has chosen a grey material.

Mary Wood, the fifth teen leader, is the daughter of Mr. and Mrs. Clarence Wood, 646 Flanders St., with five years of clothing experience and one year of knitting experience with 4-H. Mary's costume for the treasure hunt is a red and white sailcloth pant suit with a vest of red and white print on one side and a reversible red lining. The pants are of red. She made a white perma-press blouse with balloon sleeves and a stand-up collar to complement the bright suit.

Mary's knitting project is a vest of the pattern of Barbara's and Cathy's, but Mary has chosen to do hers in a medium blue shade. The girls intend to end the treasure hunt for the families with refreshments; a large pirate's cake, coffee and punch will be the plund-

er for the treasure hunters. The refreshment table will carry, out the theme of the evening with a large treasure chest adorning the center, with green, white and gold decorations.

Other hard-working members of the Gingham Belles who will be displaying their clothing at the Beach school are Martha Blanchard, Beth Clark, Mary Clark (also in the knitting division), Chris Duerr, Jane Ewald, Lou Ann Hankard (also in the knitting division), Liz Haselschwardt, Erin Headrick, Terri Jones (also in the knitting division), Lori Klink (also in the knitting division), Kim Lyle, Suzanne Morrison, Julie Pennington, Julie Proctor, Lori Proctor, Karen Romine, Kathy Rybka, (also in the knitting division), Sharon Schiller (also in the knitting division), Beth Tobin, and Karen Tobin.

Consumers Power Man To Address Altar Society Members

Earl J. Hill, public relations representative of Consumers Power Co., Jackson, will be guest speaker at St. Mary Altar Society meeting Monday, March 2, at 8 p.m. in St. Mary School Hall. His topic will be "Winning Your Way With People."

All church women of the Chelsea area are invited to attend this meeting.

80th BIRTHDAY HONORED

A surprise open house in honor of Mrs. Amanda Eschelbach on the occasion of her 80th birthday was held Sunday afternoon, Feb. 22, at her home, 12443 E. Michigan Ave., Grass Lake. Mrs. Eschelbach is the sister of Mrs. Leigh (Bertha) Luick, Herman Gross, and Frank Gross all of Chelsea. Nearly 70 guests were present from Grass Lake, Brooklyn, Jackson, Chelsea, Ann Arbor, Dexter, Ypsilanti, Detroit, and Toledo, O.

Telephone Your Club News
To GR 5-3581.

TIPS

for your

TOP

from



TODDY and FRAN

With March winds about to blow, keep in mind when you think of a place to go for a hairdo that will be convenient — because, as you may know, we not only offer the nicest group of operators you could ask for, but we provide a place for them to operate where there is free, adjacent parking. Once you have a beautiful new hairdo, you can whisk to your car with ease before the March winds doth blow it out of control. You'll love the traffic-free drive out and the easy parking and the special way our girls give you service.

Magic Mirror Beauty Salon
Phone 665-0816

BEAUTIFUL, COLORFUL,
GO EVERYWHERE
WUNDA WEVE
NYLON SHAG

CARPET

SALE

ONLY

899

Sq. Yd.

Complete With 62-Oz.
Sponge Rubber Waffle Pad
and Tackless Installation

Regularly 11.59

SALE STARTS TUESDAY, FEB. 17
ENDS SATURDAY, MARCH 7

We have it . . . the Wunda Weve shag carpet that'll make a showcase of your home.

Rich, cuddlesome Showcase carpet . . . It'll turn you loose from carpet cares, it'll set a mood you'll want to keep.

Easy to clean; easy to keep; colorfast . . . this is the carpet that lives up to its name.

Sunset reds and rouge, Mediterranean blues, desert golds, a Scottish highland's misty hue. Color comes to Wunda Weve, naturally.

LOOK!

SHOWCASE PRICES
MAKE IT BEAUTIFUL

	INSTALLED
9 x 12 ROOM	\$107.88
(12 SQUARE YARDS)	
9 x 15 ROOM	\$134.85
(15 SQUARE YARDS)	
12 x 12 ROOM	\$143.84
(16 SQUARE YARDS)	
12 x 14 ROOM	\$179.80
(20 SQUARE YARDS)	
15 x 24 ROOM	\$359.60
(40 SQUARE YARDS)	

DIAL 475-8621 (313)

Our Shop-At-Home Service
lets you see
luxurious Wunda Weve carpeting
on your own floors
before you buy.

Call now for free estimate
during this two week period.

Budget terms,
no down payment,
3 years to pay

MONTHLY PAYMENT ON
40 SQ. YDS. FOR 36 MONTHS
APPROXIMATELY \$12.50



MAIN ST. IN CHELSEA TELEPHONE 475-8621
Open Friday evenings until 9 p.m.



INVITATIONS or
ANNOUNCEMENTS . . .

Let us provide you with the very finest printed or engraved invitations and announcements. Make certain that your wedding stationery is of top quality and conforms to correct social requirements. We can advise you on these important details.

The Chelsea Standard

Commercial Printing Department



MAKE MILK
the mainstay of your
LENTEN MEALS
Brighten and enrich lenti-
men menus with milk and
other dairy products.

WEINBERG DAIRY

QUALITY PASTEURIZED DAIRY PRODUCTS

Old US-12

Phone GR 5-5771

Grievance Summary Briefs Must Be Filed By March 6

Friday, March 6, is the deadline for the filing of summary briefs by the Chelsea Education Association (CEA) and the Chelsea Board of Education in connection with the three grievances which were turned over to the American Arbitration Association for binding arbitration last month.

A hearing on the three grievances filed by the CEA on behalf of three Chelsea educators was held Thursday, February 12 in the board room of the Chelsea High school. M. David Keefe, an arbitrator by profession, heard the three grievances during the day-long session.

Keefe, who was chosen by both groups through a selection process set up by the American Arbitration Association, set the March 6 date for the written summations. Each side must file a separate brief for each grievance.

Filing the summations for the teachers will be two of the CEA negotiators, Leonard Solomon and Mary K. Weber. The Board of Education is represented by Thomas Nordberg of the Lansing firm of Thrun & Thrun.

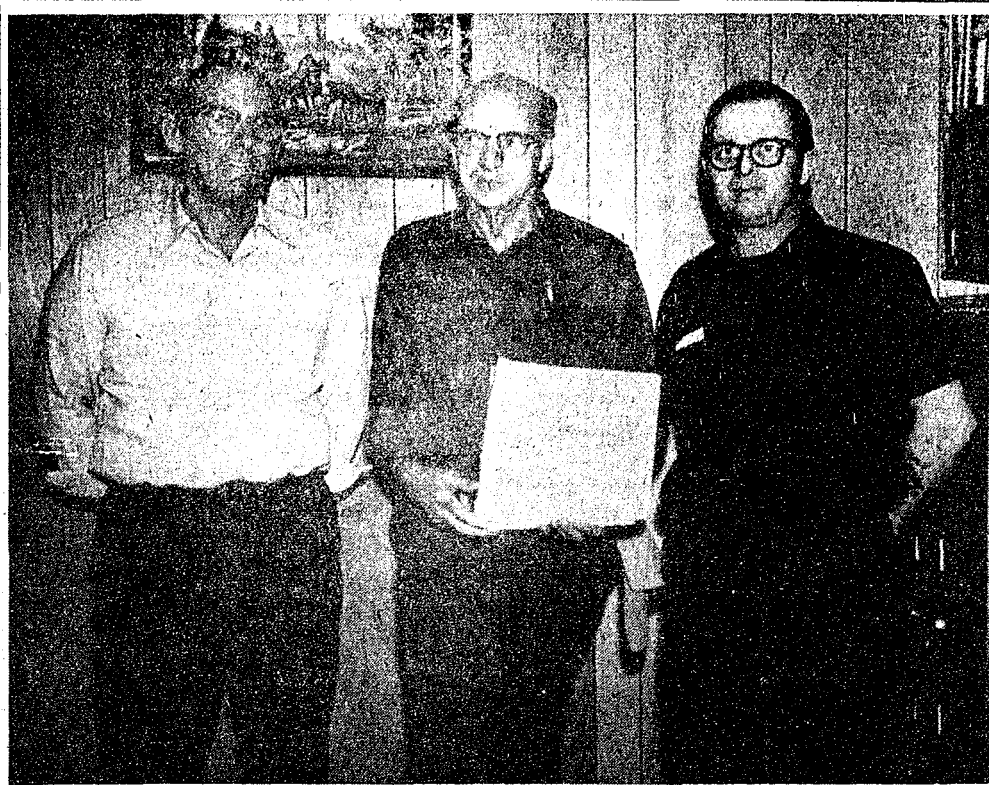
Keefe is not required to answer the written summations for 30 days after the March 6 filing date. The three grievances, which were filed originally in November

and December, involve disputes over the use of business days allotted to teachers, and a question of an alleged overload in a teaching assignment.

Lawrence Lonsway, who filed his grievance Nov. 26, and Dennis Raymond, who filed Dec. 5, both are questioning the right of the board to withhold payment for days taken by them, which were deemed not business days by the board and therefore subject to pay penalty for absence, but were classified as business days by the two.

Douglas Matz, who filed his grievance on Nov. 20, charges an alleged overload in his teaching assignment. He claims that he was given two planning periods last year; and according to Article V, Section A 3b of the Master Agreement, is entitled to the same this year. The board claims that only one period for planning was allotted to Matz, the time in dispute, the board claims was travel time between two schools, allotted because of the difference in the time schedule of the two schools. Binding arbitration is the final step in the procedure for a teacher with a grievance.

Telephone Your Club News To GR 5-3581.



RETIRING: Presented with a Bible by the Financial secretary of Amalgamated Local 437, UAW, Lloyd Keeny accepted it upon his retirement after approximately 33 years with Federal Screw Works. Keeny (center) is seen standing between his foreman, James Allan (left) of the secondary operations department, where Keeny is involved in machine set-up, and Farley Keeny, who has three children in the Chelsea area (Patricia Keener, Kay Zumbro and Douglas Keeny) intends to spend some time relaxing at home after his retirement, effective tomorrow, and in seeing his nine grandchildren.

SCHOOL LUNCH MENU!

Monday, March 2—Hamburgers with buns, hash brown potatoes, green beans, peachy vanilla pudding, and milk.

Tuesday, March 3—Beef stew over biscuits, cottage cheese with pineapple, bread and butter, chocolate cake, and milk.

Wednesday, March 4—Italian Spaghetti with meat sauce, tossed salad, french bread and butter, pear crumble, and milk.

Thursday, March 5—Fried chicken, whipped potatoes, buttered carrots, bread and butter, pumpkin dessert, and milk.

Friday, March 6—Fish burger on a bun, tartar sauce, cabbage and carrot salad, chips, apple sauce, and milk.

Telephone Your Club News To GR 5-3581.

Farmers Week Set March 23-27 On MSU Campus

East Lansing—1970 Farmers' Week has been set for March 23-27 at Michigan State University, reports Prof. Byron Good, chairman.

More than 20,000 farmers and rural leaders are expected to attend the event which ranks as the largest agricultural-educational activity in the nation.

Professor Good says 274 speakers and 40 university departments will present more than 200 educational programs and demonstrations.

Focusing on the theme, "Dawn of a Decade," Farmers' Week sessions will concentrate on technological developments and the social problems facing rural Michigan in the 1970s.

Telephone Your Club News To GR 5-3581.

Boy Scouts Hear Soap Box Derby Plans

The thrill of soap-box derby racing was illustrated for a dual meeting of Scout Troops 425 and 476 on Tuesday night, Feb. 24 by Warren Wright of the Ann Arbor Jaycees.

Wright showed the more than 75 boys movies of the Akron, O., 1969 Soap Box Derby. Wright presented the movies and passed out information on the 1970 derby to be held locally in the near future. Wright noted that the Jaycees and Rampy Chevrolet in Ann Arbor would be co-sponsors of the event. The boys were invited to attend a clinic to be held this Saturday, Feb. 28 at 1 p.m. at Rampy Chevrolet.

Wright also showed movies of the German International Derby.

Boys were also entertained by Patrolman Louis Schneider, who presented a demonstration speech on narcotics. Schneider's presentation is laced with demonstrations and vivid descriptions of the symptoms and ill effects of drug abuse. He has presented the talk to several area groups and is available by calling the Chelsea Police Department.

Both troops also attended the Winter Events at Whitmore Lake.

The troops noted that they would like to thank the area merchants who aided them in all ways during Boy Scout Week, and who continue to help support the scouts throughout the year.

The troops decided that the window displays in Foster's Men's Wear window were a success and were grateful for the opportunity to set the display in the window.

Scouts were pleased with all those who helped sponsor the full-page advertisement for scouting in The Standard, commented James Brannham, scoutmaster of Troop 425.

99th Birthday

Mr. and Mrs. Arthur Paul and Mrs. Herbert Paul spent the weekend in Freelandville, Ind., to be present at a birthday dinner in observance of Mrs. Herbert Paul's father, William Yocum who was 99 years old Feb. 23. His home church held a Sunday pot-luck dinner in his honor. Mr. Yocum is still very active, walking wherever he wishes to go around town and keeping house for himself, including doing his own laundry. He has many friends in the Chelsea area since he visits here frequently.

District Court Proceedings

Lloyd Rondo, Whitmore Lake, appeared before District Court Judge Patrick Conlin Tuesday, Feb. 24 and was found guilty of impaired driving and paid a total of \$125 in fines and court costs.

In other action on Wednesday, Feb. 25 Michael Paul Root of Ann Arbor pleaded guilty to malicious destruction of property under \$100. He will be sentenced March 23.

Percy Budreau of Trinkle Rd., pleaded guilty Wednesday, Feb. 25 to impaired driving and was fined and paid court costs totaling \$75.

In Dexter, on Friday, Feb. 20, Kenneth Sand was found guilty in the district court of speeding 55 mph in a 30 mile an hour zone. He paid a fine and court costs of \$30.

Subscribe today to The Standard!

Youth Arrested For Stealing Pick-Up Truck

Police report that a truck, belonging to Schneider's grocery store was recovered the same day that it was stolen, Thursday, Feb. 19.

The pick-up truck, which was parked on Park St., near the store at 121 S. Main St., was stolen at 8:55 a.m. The keys had been left in the truck.

A 16-year-old youth was arrested Saturday, Feb. 21 and released into the custody of his parents to appear in juvenile court. The youth, who admitted to the theft, is not a resident of the village. He was brought into custody by his parents upon the request of the Chelsea Police Department.

The youth drove the car to Napoleon and later abandoned it on Smythe Rd. near Manchester, where it was recovered later in the day.

Firemen Called For Two Blazes

Fire trucks were called out Thursday, Feb. 19 at 6:30 p.m. to the property of Charles Slocum on Old US-12 West. There was a fire which caused considerable damage to a building on the property. The fire was apparently caused by an over-heated furnace. 14 men and four trucks were called to the scene. The fire took about two hours to extinguish.

A fire at the Jack H. Van Gorder property on Island Lake Rd., was reported Sunday, Feb. 22. Firemen extinguished a fire in a barn on the property, which contained bale hay, oats, and some shelled corn. There were some sheep in the barn, but they were exited without damage. There was no house on the property.

Gasoline trucks dangle an iron chain behind them to ground static electricity created by sloshing of the liquid.

BOB & MARY'S WATERLOO STORE

OPEN 8 a.m. to 9 p.m. EVERY DAY
15705 Gorton Rd., Waterloo Phone 475-5921

SURFINE SALE

Through Saturday, March 7, 1970

JIM'S UNCOOKED PIZZAS

12-in., Reg. \$1.39 . . . \$1.25

SURFINE CATSUP . . . 5 for \$1.00

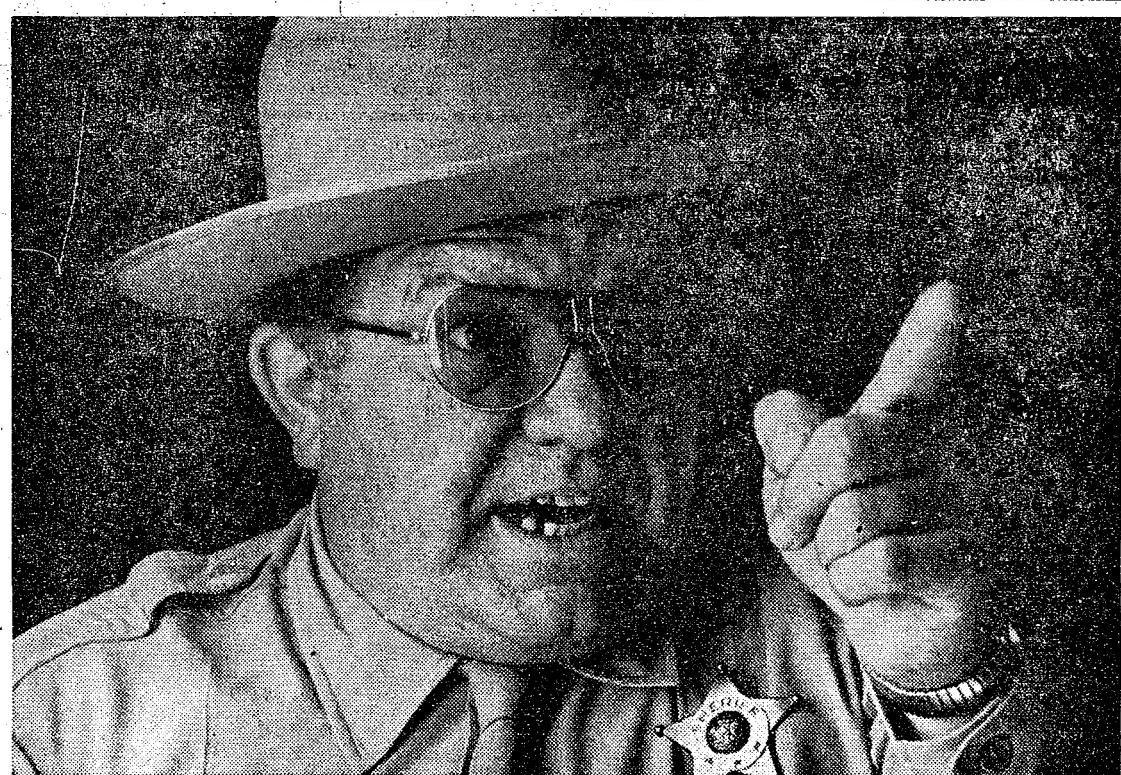
SURFINE VAC-PAC CORN . . 6 for \$1.00

SURFINE CAKE MIXES . . . 4 for \$1.00

NO. 303 CAN

SURFINE FRUIT COCKTAIL . 5 for \$1.00

We are now accepting Food Coupons.



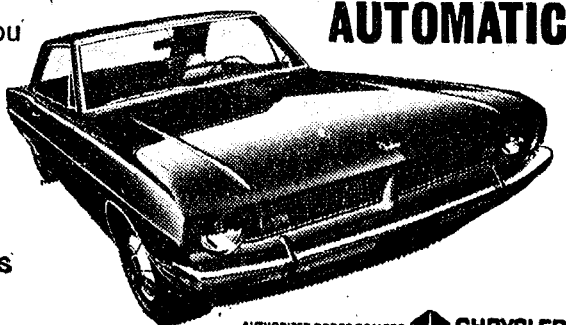
I'M GIVIN' YOU 60 DAYS!

(To Get a Dart Swinger—
with the Automatic Transmission at No Extra Cost!)

Package includes:

- 3-speed TorqueFlite automatic transmission at NO CHARGE (saves you \$191 on V8s, \$175 on Sixes)
- Vinyl roof • Deluxe wheel covers
- White sidewall tires
- Remote-control outside mirror
- Full carpeting • Deluxe vinyl interior
- "Rim Blow" deluxe steering wheel
- Body side mouldings with vinyl inserts
- Belt mouldings • Wheel-lip mouldings
- Bumper guards, front & rear

DART SWINGER AUTOMATIC



AUTHORIZED DODGE DEALERS CHRYSLER MOTORS CORPORATION

Looking for America's No. 1 Compact Value?
YOU GET IT ALL IN A DODGE!

G. A. SALES & SERVICE, INC.

1185 MANCHESTER ROAD

CHELSEA, MICHIGAN

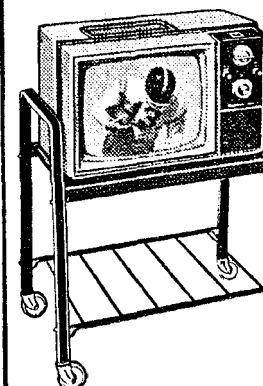


Easiest Way to Lovelier Rooms



GAMBLE'S
110 N. Main
475-7472

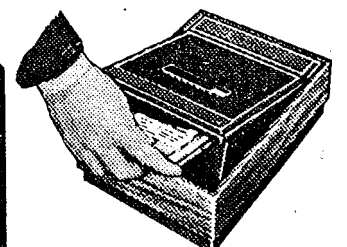
SAVE \$20



Color TV
Complete
with Cart

NOW ONLY
\$259⁹⁰

Enjoy big-set performance and lasting reliability! Mobile model 6222 will delight you with its vivid color 14" (diagonal measure) pictures, highly dependable 3 I.F. Stage Bonded Circuitry chassis and many other superb Magnavox features. Perfect in any room—kitchen, bedroom, den, or office. Just one of many Magnavox values.



SAVE \$20

8-Track Stereo Cartridge Player—solid-state model 886 lets you enjoy up to 70 minutes of uninterrupted music—and your hands never touch the tape! On/off controlled by snap-up lid, illuminated program indicator plus Track Selector Button. Easily connects to your Magnavox stereo console or Custom Stereo System. Perfect on console or adjacent tables or shelves. NOW ONLY \$69.90

FRIGID PRODUCTS

LLOYD R. HEYDLAUFF

113 N. Main St., Chelsea

Phone GR 9-6651